

# Anti-PYCR1 antibody ab102601

## 1 References [画像数 3](#)

医薬用外劇物

### 製品の概要

製品名	Anti-PYCR1 antibody
製品の詳細	Rabbit polyclonal to PYCR1
由来種	Rabbit
アプリケーション	<b>適用あり:</b> WB, ICC/IF, IHC-P
種交差性	<b>交差種:</b> Human
免疫原	Recombinant protein fragment containing a sequence corresponding to a region within amino acids 1 and 287 of Human PYCR1 (AAH01504).
ポジティブ・コントロール	WB: Raji cell lysate; IHC-P: Human breast cancer tissue, IF: HeLa whole cells.
特記事項	<p>The Life Science industry has been in the grips of a reproducibility crisis for a number of years. Abcam is leading the way in addressing this with our range of recombinant monoclonal antibodies and knockout edited cell lines for gold-standard validation. Please check that this product meets your needs before purchasing.</p> <p>If you have any questions, special requirements or concerns, please send us an inquiry and/or contact our Support team ahead of purchase. Recommended alternatives for this product can be found below, along with publications, customer reviews and Q&amp;As</p>

### 製品の特性

製品の状態	Liquid
保存方法	Shipped at 4°C. Store at +4°C short term (1-2 weeks). Upon delivery aliquot. Store at -20°C. Avoid freeze / thaw cycle.
バッファー	pH: 7.00 Preservative: 0.01% Thimerosal (merthiolate) Constituents: 1.21% Tris, 0.75% Glycine, 20% Glycerol (glycerin, glycerine)
精製度	Immunogen affinity purified
ポリ/モノ	ポリクローナル
アイソタイプ	IgG

### アプリケーション

## The Abpromise guarantee

**Abpromise保証は、**次のテスト済みアプリケーションにおけるab102601の使用に適用されます

アプリケーションノートには、推奨の開始希釈率がありますが、適切な希釈率につきましてはご確認ください。

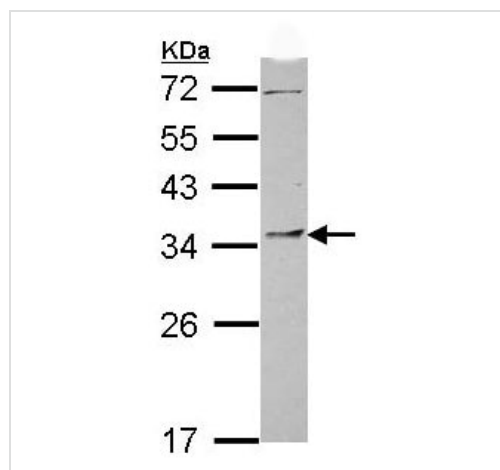
アプリケーション	Abreviews	特記事項
WB		1/500 - 1/3000. Predicted molecular weight: 33 kDa.
ICC/IF		1/100 - 1/1000.
IHC-P		1/100 - 1/1000.

## ターゲット情報

**関連性** PYCR1 is an enzyme that catalyzes the NAD(P)H-dependent conversion of pyrroline-5-carboxylate to proline. This enzyme may also play a physiologic role in the generation of NADP(+) in some cell types. It forms a homopolymer and localizes to the mitochondrion.

**細胞内局在** Mitochondrial

## 画像

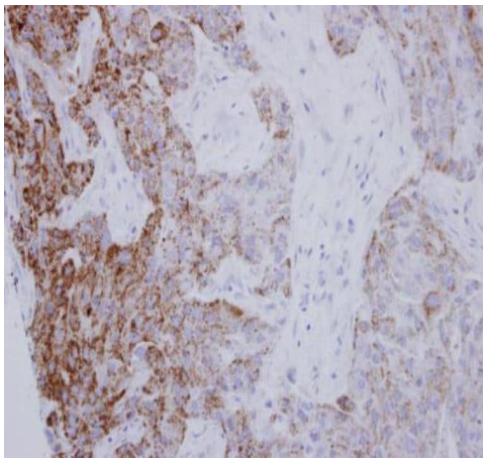


Anti-PYCR1 antibody (ab102601) at 1/1000 dilution + Raji (human Burkitt's lymphoma cell line) whole cell lysate at 30 µg

**Predicted band size: 33 kDa**

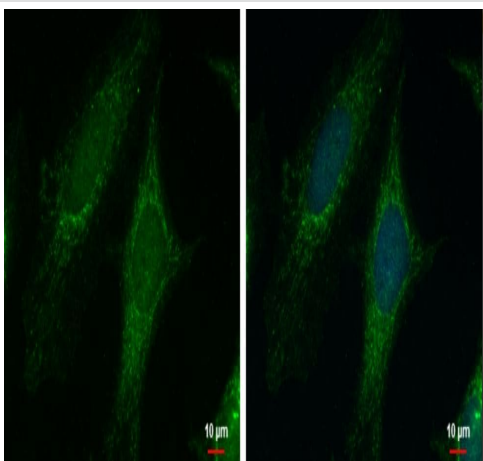
12% SDS PAGE

Western blot - Anti-PYCR1 antibody (ab102601)



Immunohistochemical analysis of paraffin-embedded human breast cancer tissue labeling PYCR1 with ab102601 at 1/250 dilution.  
Antigen Retrieval: EDTA based buffer, pH 8.0, 15min.

Immunohistochemistry (Formalin/PFA-fixed paraffin-embedded sections) - Anti-PYCR1 antibody (ab102601)



Immunofluorescence analysis of 2% paraformaldehyde-fixed HeLa (human epithelial cell line from cervix adenocarcinoma) whole cell labeling PYCR1 protein at mitochondria (green) with ab102601 at 1/500 dilution. Blue: Hoechst 33342 staining.

Immunocytochemistry/ Immunofluorescence - Anti-PYCR1 antibody (ab102601)

**Please note:** All products are "FOR RESEARCH USE ONLY. NOT FOR USE IN DIAGNOSTIC PROCEDURES"

### Our Abpromise to you: Quality guaranteed and expert technical support

- Replacement or refund for products not performing as stated on the datasheet
- Valid for 12 months from date of delivery
- Response to your inquiry within 24 hours
- We provide support in Chinese, English, French, German, Japanese and Spanish
- Extensive multi-media technical resources to help you
- We investigate all quality concerns to ensure our products perform to the highest standards

If the product does not perform as described on this datasheet, we will offer a refund or replacement. For full details of the Abpromise, please visit <https://www.abcam.co.jp/abpromise> or contact our technical team.

## Terms and conditions

---

- Guarantee only valid for products bought direct from Abcam or one of our authorized distributors