


# Anti-PURA antibody ab125200

[1 Abreviews](#) [3 References](#) [画像数 1](#)

### 製品の概要

製品名	Anti-PURA antibody
製品の詳細	Rabbit polyclonal to PURA
由来種	Rabbit
アプリケーション	適用あり: IP
種交差性	<p>交差種: Human</p> <p>交差が予測される動物種: Mouse, Rat, Sheep, Rabbit, Guinea pig, Cow, Dog, Pig, Chimpanzee, Ferret, Rhesus monkey, Gorilla, Orangutan </p>
免疫原	Synthetic peptide, corresponding to a region within amino acids 100-150 of Human PURA (NP_005850.1).
ポジティブ・コントロール	HeLa whole cell lysate ( <a href="#">ab150035</a> ).
特記事項	<p>The Life Science industry has been in the grips of a reproducibility crisis for a number of years. Abcam is leading the way in addressing this with our range of recombinant monoclonal antibodies and knockout edited cell lines for gold-standard validation. Please check that this product meets your needs before purchasing.</p> <p>If you have any questions, special requirements or concerns, please send us an inquiry and/or contact our Support team ahead of purchase. Recommended alternatives for this product can be found below, along with publications, customer reviews and Q&amp;As</p>

### 製品の特性

製品の状態	Liquid
保存方法	Shipped at 4°C. Upon delivery aliquot and store at -20°C. Avoid freeze / thaw cycles.
バッファー	<p>pH: 7</p> <p>Preservative: 0.09% Sodium azide</p> <p>Constituent: 99% Tris citrate/phosphate</p> <p>pH 7 to 8.</p>
精製度	Immunogen affinity purified
特記事項 (精製)	ab125200 was affinity purified using an epitope specific to PURA immobilized on a solid support.
ポリ/モノ	ポリクローナル

## アプリケーション

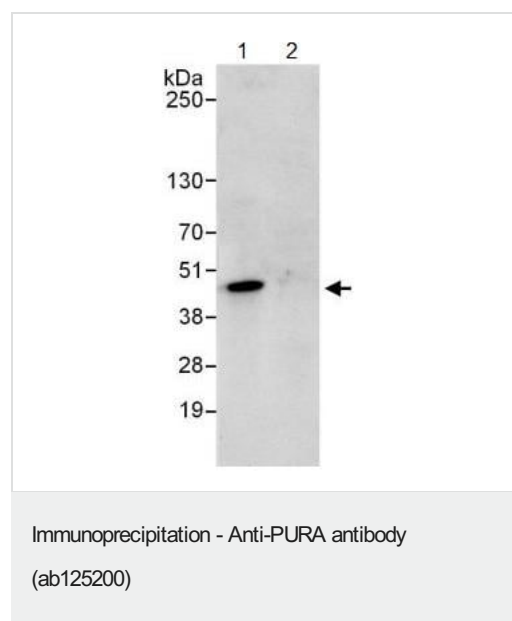
**The Abpromise guarantee** Abpromise保証は、 次のテスト済みアプリケーションにおけるab125200の使用に適用されます  
アプリケーションノートには、推奨の開始希釈率がありますが、適切な希釈率につきましてはご検討ください。

アプリケーション	Abreviews	特記事項
IP		Use at 2-10 µg/mg of lysate.

## ターゲット情報

機能	This is a probable transcription activator that specifically binds the purine-rich single strand of the PUR element located upstream of the MYC gene. May play a role in the initiation of DNA replication and in recombination.
配列類似性	Belongs to the PUR DNA-binding protein family.
細胞内局在	Nucleus.

## 画像



Detection of PURA by Western Blot of Immunoprecipitate. Lane 1; an antibody to PURA at 1µg/ml staining PURA in HeLa whole cell lysate immunoprecipitated using ab125200 at 6µg/mg lysate (1 mg/IP; 20% of IP loaded/lane). The lysate in lane 2 is precipitated with an IgG control antibody. Detection: Chemiluminescence with exposure time of 10 seconds.

**Please note:** All products are "FOR RESEARCH USE ONLY. NOT FOR USE IN DIAGNOSTIC PROCEDURES"

## Our Abpromise to you: Quality guaranteed and expert technical support

- Replacement or refund for products not performing as stated on the datasheet
- Valid for 12 months from date of delivery
- Response to your inquiry within 24 hours

- We provide support in Chinese, English, French, German, Japanese and Spanish
- Extensive multi-media technical resources to help you
- We investigate all quality concerns to ensure our products perform to the highest standards

If the product does not perform as described on this datasheet, we will offer a refund or replacement. For full details of the Abpromise, please visit <https://www.abcam.co.jp/abpromise> or contact our technical team.

#### **Terms and conditions**

---

- Guarantee only valid for products bought direct from Abcam or one of our authorized distributors