

Anti-Pumilio 2 antibody [EPR3813] ab92390

リコンビナント **RabMAb**

12 References **画像数 6**

製品の概要

製品名	Anti-Pumilio 2 antibody [EPR3813]
製品の詳細	Rabbit monoclonal [EPR3813] to Pumilio 2
由来種	Rabbit
特異性	This antibody is predicted to not cross react with Pumilio 1.
アプリケーション	適用あり: Flow Cyt (Intra), WB, IP, ICC/IF
種交差性	交差種: Mouse, Rat, Human
免疫原	Synthetic peptide within Human Pumilio 2 aa 1-100. The exact sequence is proprietary.
ポジティブ・コントロール	WB: HeLa and 293T cell lysates ICC/IF: MCF-7 cells. Flow Cyt (intra): HeLa cells IP: HeLa cells
特記事項	<p>This product is a recombinant monoclonal antibody, which offers several advantages including:</p> <ul style="list-style-type: none"> - High batch-to-batch consistency and reproducibility - Improved sensitivity and specificity - Long-term security of supply - Animal-free production <p>For more information see here.</p> <p>Our RabMAb[®] technology is a patented hybridoma-based technology for making rabbit monoclonal antibodies. For details on our patents, please refer to RabMAb[®] patents.</p>

製品の特性

製品の状態	Liquid
保存方法	Shipped at 4°C. Store at +4°C short term (1-2 weeks). Upon delivery aliquot. Store at -20°C long term. Avoid freeze / thaw cycle.
バッファー	<p>pH: 7.20</p> <p>Preservative: 0.01% Sodium azide</p> <p>Constituents: 59% PBS, 40% Glycerol (glycerin, glycerine), 0.05% BSA</p>
精製度	Protein A purified
ポリ/モノ	モノクローナル
クローン名	EPR3813
アイソタイプ	IgG

アプリケーション

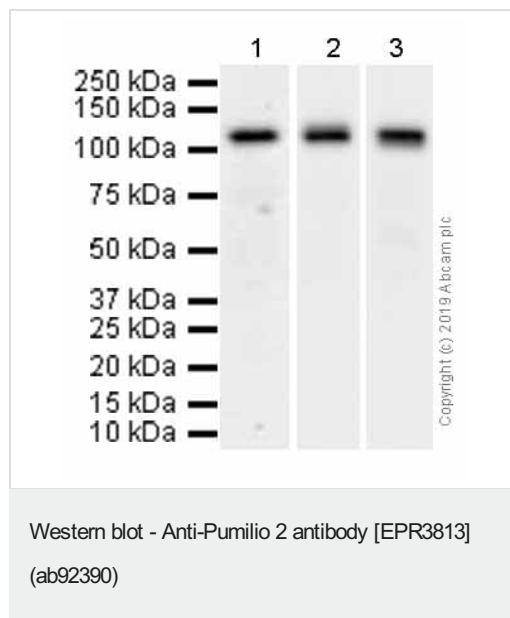
The Abpromise guarantee **Abpromise保証は、次のテスト済みアプリケーションにおけるab92390の使用に適用されます**
アプリケーションノートには、推奨の開始希釈率がありますが、適切な希釈率につきましてはご検討ください。

アプリケーション	Abreviews	特記事項
Flow Cyt (Intra)		1/30.
WB		1/5000 - 1/10000. Predicted molecular weight: 114 kDa.
IP		1/10 - 1/20.
ICC/IF		1/50. For unpurified use at 1/100 - 1/250.

ターゲット情報

機能	Sequence-specific RNA-binding protein that regulates translation and mRNA stability by binding the 3'-UTR of mRNA targets. Its interactions and tissue specificity suggest that it may be required to support proliferation and self-renewal of stem cells by regulating the translation of key transcripts.
組織特異性	Expressed in male germ cells of adult testis (at protein level). Highly expressed in testis and ovary. Predominantly expressed in stem cells and germ cells. Expressed at lower level in brain, heart, kidney, liver, muscle, placenta, intestine and stomach Expressed in cerebellum, corpus callosum, caudate nucleus, hippocampus, medulla oblongata and putamen. Expressed in all fetal tissues tested.
配列類似性	Contains 1 PUM-HD domain. Contains 8 pumilio repeats.
ドメイン	The pumilio repeats mediate the association with RNA by packing together to form a right-handed superhelix that approximates a half doughnut. The number as well as the specific sequence of the repeats determine the specificity for target mRNAs.
細胞内局在	Cytoplasm. Cytoplasmic granule. Cytoplasm > perinuclear region. The cytoplasmic granules are stress granules which are a dense aggregation in the cytosol composed of proteins and RNAs that appear when the cell is under stress. Colocalizes with NANOS3 in the stress granules (By similarity). Colocalizes with NANOS1 and SNAPIN in the perinuclear region of germ cells.

画像



All lanes : Anti-Pumilio 2 antibody [EPR3813] (ab92390) at 1/10000 dilution (Purified)

Lane 1 : HeLa (Human cervix adenocarcinoma epithelial cell) whole cell lysates

Lane 2 : Mouse brain lysates

Lane 3 : Rat brain lysates

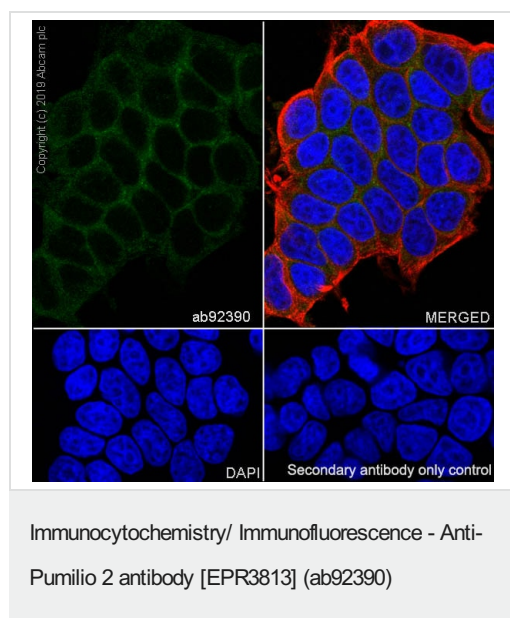
Lysates/proteins at 15 µg per lane.

Secondary

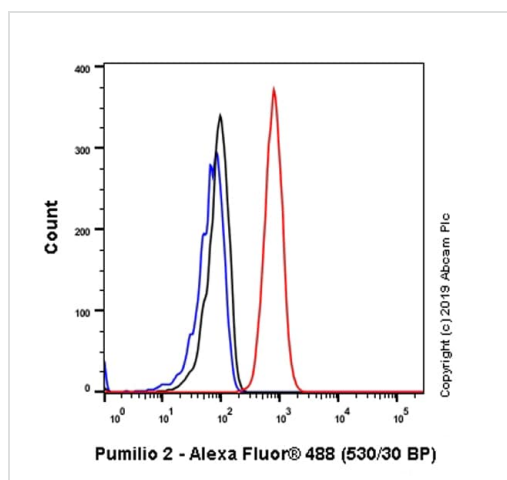
All lanes : Goat Anti-Rabbit IgG H&L (HRP) ([ab97051](#)) at 1/20000 dilution

Predicted band size: 114 kDa

Observed band size: 114 kDa

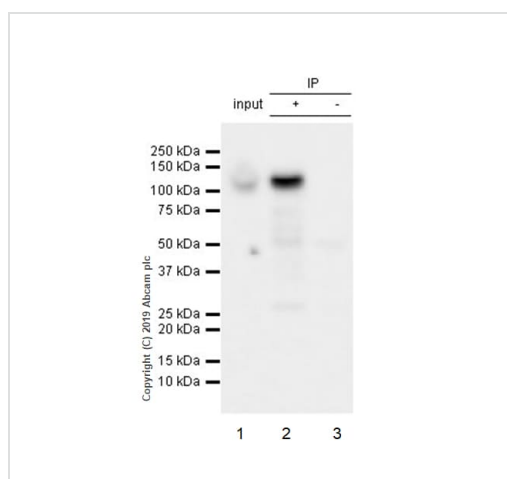


Immunocytochemistry/ Immunofluorescence analysis of MCF7 (Human breast adenocarcinoma epithelial cell) cells labeling Pumilio 2 with purified ab92390 at 1/50 dilution (4.8 µg/ml). Cells were fixed in 4% Paraformaldehyde and permeabilized with 0.1% tritonX-100. Cells were counterstained with [ab195889](#) Anti-alpha Tubulin antibody [DM1A] - Microtubule Marker (Alexa Fluor® 594) at 1/200 (2.5 µg/ml) dilution. Goat anti rabbit IgG (Alexa Fluor® 488, [ab150077](#)) was used as the secondary antibody at 1/1000 (2 µg/ml) dilution. DAPI (blue) was used as nuclear counterstain. PBS instead of the primary antibody was used as the secondary antibody only control.



Flow Cytometry (Intracellular) - Anti-Pumilio 2 antibody [EPR3813] (ab92390)

Intracellular Flow Cytometry analysis of HeLa (Human cervix adenocarcinoma epithelial cell) cells labeling Pumilio 2 with purified ab92390 at 1/30 dilution (10µg/ml) (red). Cells were fixed with 4% Paraformaldehyde and permeabilised with 90% Methanol. A Goat anti rabbit IgG (Alexa Fluor® 488, [ab150077](#)) secondary antibody was used at 1/2000. Isotype control - Rabbit monoclonal IgG (Black). Unlabeled control - Cell without incubation with primary antibody and secondary antibody (Blue).



Immunoprecipitation - Anti-Pumilio 2 antibody [EPR3813] (ab92390)

ab92390 (purified) at 1/20 dilution (1ug) immunoprecipitating Pumilio 2 in HeLa whole cell lysates.

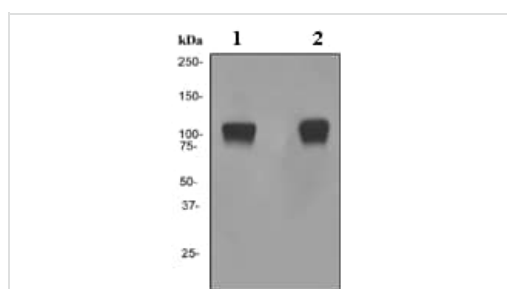
Lane 1: HeLa (Human cervix adenocarcinoma epithelial cell) whole cell lysates 10ug

Lane 2 (+): ab92390 & HeLa whole cell lysates

Lane 3 (-): Rabbit monoclonal IgG ([ab172730](#)) instead of ab92390 in HeLa whole cell lysates

For western blotting, VeriBlot for IP Detection Reagent (HRP) ([ab131366](#)) was used at 1/1000 dilution.

Blocking and diluting buffer: 5% NFDM/TBST.



Western blot - Anti-Pumilio 2 antibody [EPR3813] (ab92390)

All lanes : Anti-Pumilio 2 antibody [EPR3813] (ab92390) at 1/5000 dilution (unpurified)

Lane 1 : HeLa cell lysate

Lane 2 : 293T cell lysate

Lysates/proteins at 10 µg per lane.





Secondary

All lanes : HRP labelled goat anti-rabbit at 1/2000 dilution

Predicted band size: 114 kDa

Observed band size: 114 kDa

Why choose a recombinant antibody?

	
Research with confidence Consistent and reproducible results	Long-term and scalable supply Recombinant technology
	
Success from the first experiment Confirmed specificity	Ethical standards compliant Animal-free production

Anti-Pumilio 2 antibody [EPR3813] (ab92390)

Please note: All products are "FOR RESEARCH USE ONLY. NOT FOR USE IN DIAGNOSTIC PROCEDURES"

Our Abpromise to you: Quality guaranteed and expert technical support

- Replacement or refund for products not performing as stated on the datasheet
- Valid for 12 months from date of delivery
- Response to your inquiry within 24 hours
- We provide support in Chinese, English, French, German, Japanese and Spanish
- Extensive multi-media technical resources to help you
- We investigate all quality concerns to ensure our products perform to the highest standards

If the product does not perform as described on this datasheet, we will offer a refund or replacement. For full details of the Abpromise, please visit <https://www.abcam.co.jp/abpromise> or contact our technical team.

Terms and conditions

- Guarantee only valid for products bought direct from Abcam or one of our authorized distributors