


Anti-Pumilio 1 antibody ab3717

3 References [画像数 3](#)

製品の概要

製品名	Anti-Pumilio 1 antibody
製品の詳細	Goat polyclonal to Pumilio 1
由来種	Goat
アプリケーション	適用あり: IP, WB
種交差性	交差種: Mouse, Human 交差が予測される動物種: Rat, Rabbit, Horse, Cow, Pig, Chimpanzee, Drosophila melanogaster, Rhesus monkey, Gorilla, Orangutan, Elephant 
免疫原	Synthetic peptide (Human) - which represented a portion of human Pumilio homolog 1 encoded in part by exons 5 and 6.
ポジティブ・コントロール	WB: NIH/3T3, HEK293T, A549, K562 whole cell lysate; IP: HEK293T
特記事項	<p>The Life Science industry has been in the grips of a reproducibility crisis for a number of years. Abcam is leading the way in addressing this with our range of recombinant monoclonal antibodies and knockout edited cell lines for gold-standard validation. Please check that this product meets your needs before purchasing.</p> <p>If you have any questions, special requirements or concerns, please send us an inquiry and/or contact our Support team ahead of purchase. Recommended alternatives for this product can be found below, along with publications, customer reviews and Q&As</p>

製品の特性

製品の状態	Liquid
保存方法	Shipped at 4°C. Upon delivery aliquot and store at -20°C. Avoid freeze / thaw cycles.
バッファー	<p>pH: 7</p> <p>Preservative: 0.1% Sodium azide</p> <p>Constituents: 0.021% PBS, 1.764% Sodium citrate, 1.815% Tris</p>
精製度	Immunogen affinity purified
ポリ/モノ	ポリクローナル
アイソタイプ	IgG

アプリケーション

The Abpromise guarantee

Abpromise保証は、次のテスト済みアプリケーションにおけるab3717の使用に適用されます

アプリケーションノートには、推奨の開始希釈率がありますが、適切な希釈率につきましてはご確認ください。

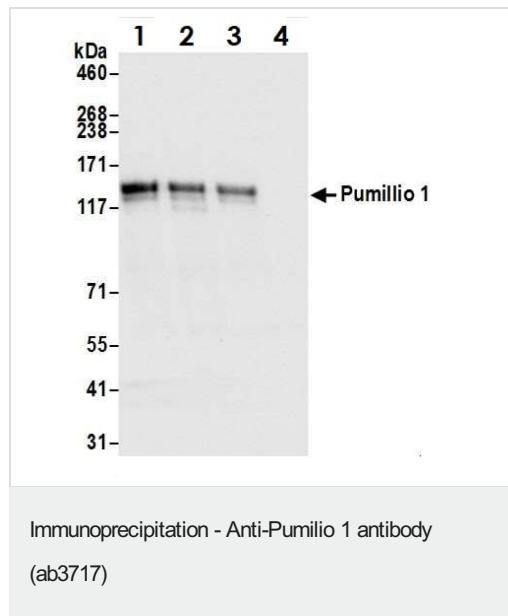
アプリケーション	Abreviews	特記事項
IP		Use at 2-10 µg/mg of lysate.
WB		1/2000 - 1/10000. Detects a band of approximately 140 kDa (predicted molecular weight: 126 kDa).

ターゲット情報

製品の状態

Cytoplasm

画像



Pumilio 1 was immunoprecipitated from HEK293T whole cell lysate (1 mg per IP reaction, 20% loaded) with ab3717 at 6 µg per reaction. Western blot was performed on the immunoprecipitate using ab3717 at 0.1 µg/mL.

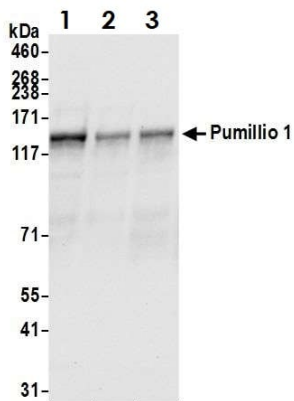
Lane 1: rabbit anti-Pumilio 1 antibody IP in HEK293T whole cell lysate.

Lane 2: ab3717 IP in HEK293T whole cell lysate.

Lane 3: ab3717 IP in HEK293T whole cell lysate

Lane 4: Control IgG in HEK293T whole cell lysate.

Detection: Chemiluminescence with an exposure time of 3 seconds



Western blot - Anti-Pumilio 1 antibody (ab3717)

All lanes : Anti-Pumilio 1 antibody (ab3717) at 0.1 µg/ml

Lane 1 : HEK293T whole cell lysate

Lane 2 : A549 whole cell lysate

Lane 3 : K562 whole cell lysate

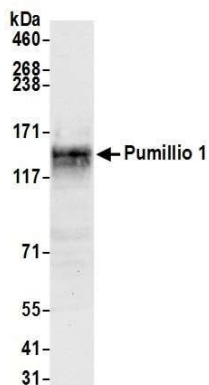
Lysates/proteins at 50 µg per lane.

Secondary

All lanes : HRP-conjugated rabbit anti-goat IgG

Predicted band size: 126 kDa

Exposure time: 10 seconds



Western blot - Anti-Pumilio 1 antibody (ab3717)

Anti-Pumilio 1 antibody (ab3717) at 0.1 µg/ml + NIH/3T3 whole cell lysate at 50 µg

Secondary

HRP-conjugated rabbit anti-goat IgG

Predicted band size: 126 kDa

Exposure time: 10 seconds

Please note: All products are "FOR RESEARCH USE ONLY. NOT FOR USE IN DIAGNOSTIC PROCEDURES"

Our Abpromise to you: Quality guaranteed and expert technical support

- Replacement or refund for products not performing as stated on the datasheet
- Valid for 12 months from date of delivery
- Response to your inquiry within 24 hours
- We provide support in Chinese, English, French, German, Japanese and Spanish
- Extensive multi-media technical resources to help you
- We investigate all quality concerns to ensure our products perform to the highest standards

If the product does not perform as described on this datasheet, we will offer a refund or replacement. For full details of the Abpromise, please visit <https://www.abcam.co.jp/abpromise> or contact our technical team.

Terms and conditions

- Guarantee only valid for products bought direct from Abcam or one of our authorized distributors