

Anti-PU.1/Spi1 antibody [EPR3158Y] ab76543

リコンビナント RabMAb

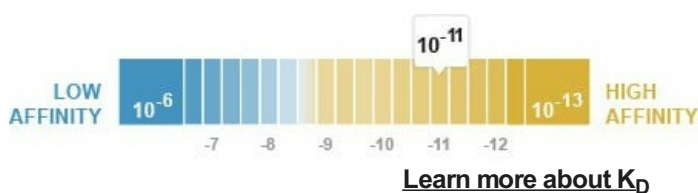
★★★★★ **3 Abreviews** **15 References** 画像数 3

製品の概要

製品名	Anti-PU.1/Spi1 antibody [EPR3158Y]
製品の詳細	Rabbit monoclonal [EPR3158Y] to PU.1/Spi1
由来種	Rabbit
アプリケーション	適用あり: IHC-P, WB 適用なし: Flow Cyt (Intra) or ICC/IF
種交差性	交差種: Human
免疫原	Synthetic peptide within Human PU.1/Spi1 aa 1-100 (N terminal). The exact sequence is proprietary. Database link: P17947
ポジティブ・コントロール	WB: Daudi, THP-1 and Raji Whole cell lysate IHC: human tonsil tissue
特記事項	This product is a recombinant monoclonal antibody, which offers several advantages including: <ul style="list-style-type: none"> - High batch-to-batch consistency and reproducibility - Improved sensitivity and specificity - Long-term security of supply - Animal-free production For more information see here . Our RabMAb [®] technology is a patented hybridoma-based technology for making rabbit monoclonal antibodies. For details on our patents, please refer to RabMAb[®] patents .

製品の特性

製品の状態	Liquid
保存方法	Shipped at 4°C. Store at -20°C. Stable for 12 months at -20°C.
解離定数 (K _D 値)	K _D = 4.40 x 10 ⁻¹¹ M



バッファー	pH: 7.20
-------	----------

	Preservative: 0.01% Sodium azide
	Constituents: 0.05% BSA, 40% Glycerol (glycerin, glycerine), 59% PBS
精製度	Protein A purified
ポリ/モノ	モノクローナル
クローン名	EPR3158Y
アイソタイプ	IgG

アプリケーション

The Abpromise guarantee **Abpromise保証は、** 次のテスト済みアプリケーションにおけるab76543の使用に適用されます
アプリケーションノートには、推奨の開始希釈率がありますが、適切な希釈率につきましてはご検討ください。

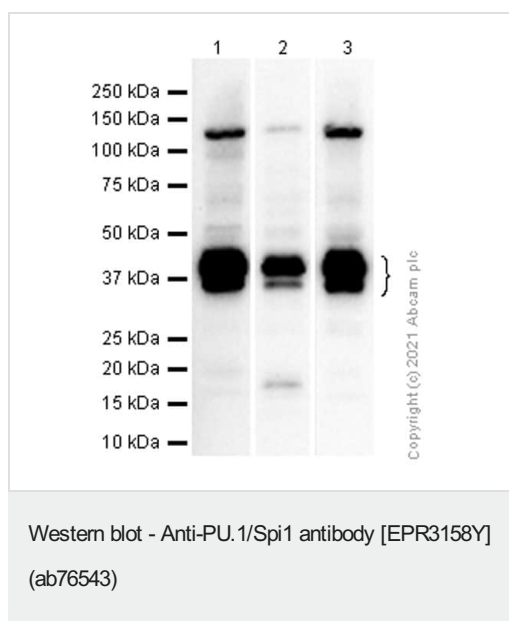
アプリケーション	Abreviews	特記事項
IHC-P		1/3000. Perform heat mediated antigen retrieval before commencing with IHC staining protocol. For unpurified use: 1/100.00000 - 1/250.00000
WB	★★★★★ (2)	1/1000. Detects a band of approximately 42 kDa (predicted molecular weight: 31 kDa). For unpurified use: 1/5000.00000 - 1/20000.00000

追加情報 Is unsuitable for Flow Cyt (Intra) or ICC/IF.

ターゲット情報

機能	Binds to the PU-box, a purine-rich DNA sequence (5'-GAGGAA-3') that can act as a lymphoid-specific enhancer. This protein is a transcriptional activator that may be specifically involved in the differentiation or activation of macrophages or B-cells. Also binds RNA and may modulate pre-mRNA splicing.
配列類似性	Belongs to the ETS family. Contains 1 ETS DNA-binding domain.
細胞内局在	Nucleus.

画像



All lanes : Anti-PU.1/Spi1 antibody [EPR3158Y] (ab76543) at 1/1000 dilution (Purified)

Lane 1 : Daudi (Human Burkitt's lymphoma lymphoblast) whole cell lysate

Lane 2 : THP-1 (Human monocytic leukemia monocyte) whole cell lysate

Lane 3 : Raji (Human Burkitt's lymphoma B lymphocyte) whole cell lysate

Lysates/proteins at 20 µg per lane.

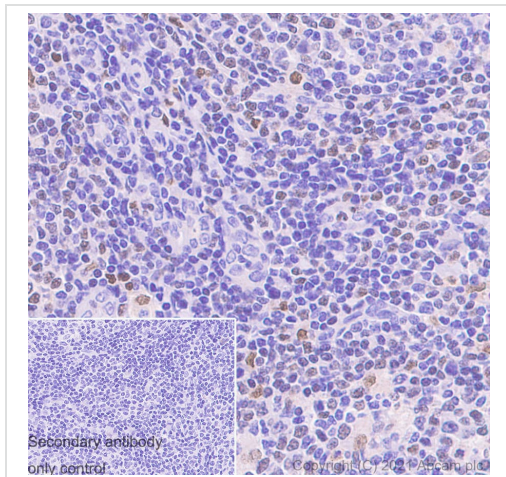
Secondary

All lanes : Goat Anti-Rabbit IgG H&L (HRP) ([ab97051](#)) at 1/20000 dilution

Predicted band size: 31 kDa

Observed band size: 37-42 kDa

PU.1 is a 37-42 kDa member of the ets family of transcription factors. The molecule weight observed is consistent with what has been described in the literature (PMID: 28362429, 31586032, 28586009).



Immunohistochemistry (Formalin/PFA-fixed paraffin-embedded sections) analysis of human tonsil tissue sections labeling PU.1/Spi1 with Purified ab76543 at 1:3000 dilution (0.035 µg/ml). Heat mediated antigen retrieval was performed using Heat mediated antigen retrieval using Bond™ Epitope Retrieval Solution 2 (pH 9.0) . Tissue was counterstained with Hematoxylin. Rabbit specific IHC polymer detection kit HRP/DAB (**ab209101**) secondary antibody was used. PBS instead of the primary antibody was used as the negative control.

Immunohistochemistry (Formalin/PFA-fixed paraffin-embedded sections) - Anti-PU.1/Spi1 antibody [EPR3158Y] (ab76543)

Why choose a recombinant antibody?

Research with confidence
Consistent and reproducible results

Long-term and scalable supply
Recombinant technology

Success from the first experiment
Confirmed specificity

Ethical standards compliant
Animal-free production

Anti-PU.1/Spi1 antibody [EPR3158Y] (ab76543)

Please note: All products are "FOR RESEARCH USE ONLY. NOT FOR USE IN DIAGNOSTIC PROCEDURES"

Our Abpromise to you: Quality guaranteed and expert technical support

- Replacement or refund for products not performing as stated on the datasheet

4

- Valid for 12 months from date of delivery
- Response to your inquiry within 24 hours
- We provide support in Chinese, English, French, German, Japanese and Spanish
- Extensive multi-media technical resources to help you
- We investigate all quality concerns to ensure our products perform to the highest standards

If the product does not perform as described on this datasheet, we will offer a refund or replacement. For full details of the Abpromise, please visit <https://www.abcam.co.jp/abpromise> or contact our technical team.

Terms and conditions

- Guarantee only valid for products bought direct from Abcam or one of our authorized distributors