

### Anti-PU.1/Spi1 antibody [2G1] ab88082

**8 References** [画像数 6](#)

#### 製品の概要

製品名	Anti-PU.1/Spi1 antibody [2G1]
製品の詳細	Mouse monoclonal [2G1] to PU.1/Spi1
由来種	Mouse
アプリケーション	<b>適用あり:</b> WB, ELISA, ICC/IF, Flow Cyt
種交差性	<b>交差種:</b> Mouse, Human, Recombinant fragment
免疫原	Recombinant fragment. This information is proprietary to Abcam and/or its suppliers.
ポジティブ・コントロール	HeLa cells; Raw 264.7 cell lysate.
特記事項	<p>This product was changed from ascites to tissue culture supernatant on 15 May 2019. Please note that the dilutions may need to be adjusted accordingly. If you have any questions, please do not hesitate to contact our scientific support team.</p> <p>The Life Science industry has been in the grips of a reproducibility crisis for a number of years. Abcam is leading the way in addressing this with our range of recombinant monoclonal antibodies and knockout edited cell lines for gold-standard validation. Please check that this product meets your needs before purchasing.</p> <p>If you have any questions, special requirements or concerns, please send us an inquiry and/or contact our Support team ahead of purchase. Recommended alternatives for this product can be found below, along with publications, customer reviews and Q&amp;As</p>

#### 製品の特性

製品の状態	Liquid
保存方法	Shipped at 4°C. Upon delivery aliquot and store at -20°C or -80°C. Avoid repeated freeze / thaw cycles.
バッファー	pH: 7.40 Constituent: 100% PBS
精製度	Tissue culture supernatant
特記事項 (精製)	Purified from TCS.
ポリ/モノ	モノクローナル
クローン名	2G1
アイソタイプ	IgG1

## アプリケーション

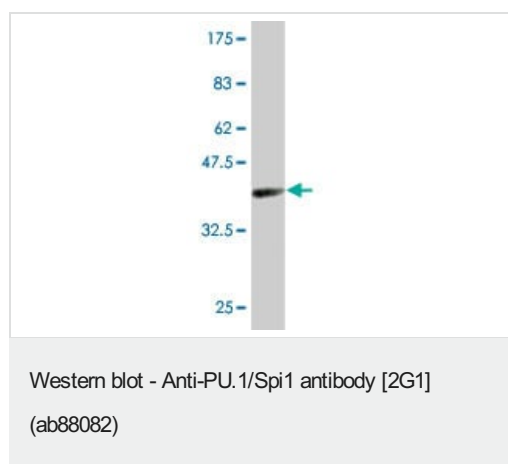
The Abpromise guarantee Abpromise保証は、次のテスト済みアプリケーションにおけるab88082の使用に適用されます  
アプリケーションノートには、推奨の開始希釈率がありますが、適切な希釈率につきましてはご確認ください。

アプリケーション	Abreviews	特記事項
WB		Use at an assay dependent concentration. Predicted molecular weight: 31 kDa.
ELISA		Use at an assay dependent concentration.
ICC/IF		Use at an assay dependent concentration.
Flow Cyt		Use at an assay dependent concentration. <b>ab170190</b> - Mouse monoclonal IgG1, is suitable for use as an isotype control with this antibody.

## ターゲット情報

機能	Binds to the PU-box, a purine-rich DNA sequence (5'-GAGGAA-3') that can act as a lymphoid-specific enhancer. This protein is a transcriptional activator that may be specifically involved in the differentiation or activation of macrophages or B-cells. Also binds RNA and may modulate pre-mRNA splicing.
配列類似性	Belongs to the ETS family. Contains 1 ETS DNA-binding domain.
細胞内局在	Nucleus.

## 画像



Anti-PU.1/Spi1 antibody [2G1] (ab88082) at 5 µg/ml + tagged human recombinant protein fragment (the immunogen) at 0.2 µg

**Secondary**

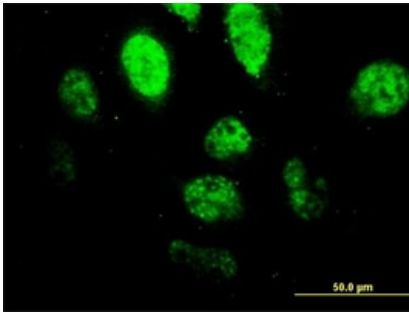
Goat Anti-Mouse IgG (H&L)-HRP Conjugate at 1/5000 dilution

**Predicted band size:** 31 kDa

**Observed band size:** 39 kDa

Note: Molecular weight of the proprietary tag alone is 26 kDa.

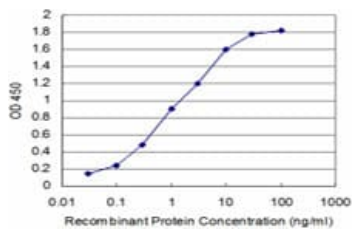
This image was generated using the ascites version of the product.



Immunocytochemistry/ Immunofluorescence - Anti-PU.1/Spi1 antibody [2G1] (ab88082)

ab88082, at 10  $\mu\text{g/ml}$ , staining PU.1/Spi1 in HeLa cells by Immunofluorescence.

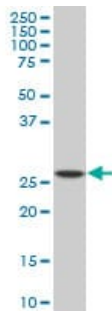
This image was generated using the ascites version of the product.



ELISA - Anti-PU.1/Spi1 antibody [2G1] (ab88082)

Detection limit for recombinant (human) tagged ab88082 is approximately 0.1 ng/ml as a capture antibody.

This image was generated using the ascites version of the product.



Western blot - Anti-PU.1/Spi1 antibody [2G1] (ab88082)

Anti-PU.1/Spi1 antibody [2G1] (ab88082) at 5  $\mu\text{g/ml}$  + Raw 264.7 cell lysate (Mouse) at 25  $\mu\text{g}$

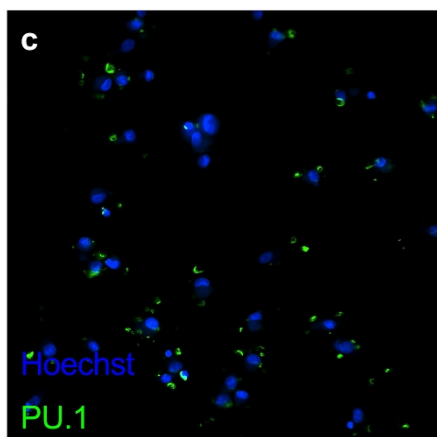
### Secondary

Goat anti-Mouse IgG (H&L)-HRP at 1/2500 dilution

**Predicted band size:** 31 kDa

**Observed band size:** 31 kDa

This image was generated using the ascites version of the product.

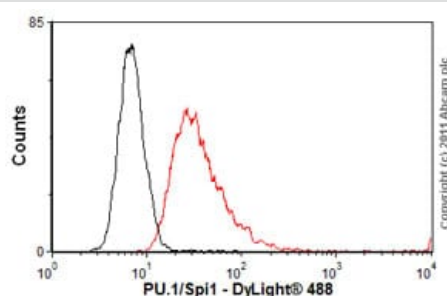


Immunocytochemistry/ Immunofluorescence - Anti-PU.1/Spi1 antibody [2G1] (ab88082)

Image courtesy of Sellgren et al. Mol Psychiatry. 2017 Feb; 22(2): 170–177. Fig S3: Doi: 10.1038/mp.2016.220

Ab88082 staining PU.1/Spi1 in human induced microglia by ICC/IF (Immunocytochemistry/Immunofluorescence). Cells were fixed with 4% paraformaldehyde for 15 minutes. Samples were incubated with primary antibody (1:200) for 2 hours at room temperature. Hoechst nuclear stain (blue) was used at 1:5000 dilution.

This image was generated using the ascites version of the product.



Flow Cytometry - Anti-PU.1/Spi1 antibody [2G1] (ab88082)

Overlay histogram showing K562 cells stained with ab88082 (red line). The cells were fixed with 80% methanol (5 min) and then permeabilized with 0.1% PBS-Tween for 20 min. The cells were then incubated in 1x PBS / 10% normal goat serum / 0.3M glycine to block non-specific protein-protein interactions followed by the antibody (ab88082, 2µg/1x10<sup>6</sup> cells) for 30 min at 22°C. The secondary antibody used was DyLight® 488 goat anti-mouse IgG (H+L) ([ab96879](#)) at 1/500 dilution for 30 min at 22°C. Isotype control antibody (black line) was mouse IgG1 [ICIGG1] ([ab91353](#), 2µg/1x10<sup>6</sup> cells) used under the same conditions. Acquisition of >5,000 events was performed.

This image was generated using the ascites version of the product.

**Please note:** All products are "FOR RESEARCH USE ONLY. NOT FOR USE IN DIAGNOSTIC PROCEDURES"

### **Our Abpromise to you: Quality guaranteed and expert technical support**

---

- Replacement or refund for products not performing as stated on the datasheet
- Valid for 12 months from date of delivery
- Response to your inquiry within 24 hours
  
- We provide support in Chinese, English, French, German, Japanese and Spanish
- Extensive multi-media technical resources to help you
- We investigate all quality concerns to ensure our products perform to the highest standards

If the product does not perform as described on this datasheet, we will offer a refund or replacement. For full details of the Abpromise, please visit <https://www.abcam.co.jp/abpromise> or contact our technical team.

### **Terms and conditions**

---

- Guarantee only valid for products bought direct from Abcam or one of our authorized distributors