


# Anti-PTPRN2 antibody ab92652

画像数 1

### 製品の概要

製品名	Anti-PTPRN2 antibody
製品の詳細	Rabbit polyclonal to PTPRN2
由来種	Rabbit
アプリケーション	適用あり: WB
種交差性	交差種: Mouse 交差が予測される動物種: Rat 
免疫原	The antiserum was produced against a synthetic peptide derived from the internal region of Human PTPRN2.
特記事項	<p>The Life Science industry has been in the grips of a reproducibility crisis for a number of years. Abcam is leading the way in addressing this with our range of recombinant monoclonal antibodies and knockout edited cell lines for gold-standard validation. Please check that this product meets your needs before purchasing.</p> <p>If you have any questions, special requirements or concerns, please send us an inquiry and/or contact our Support team ahead of purchase. Recommended alternatives for this product can be found below, along with publications, customer reviews and Q&amp;As</p>

### 製品の特性

製品の状態	Liquid
保存方法	Shipped at 4°C. Store at -20°C. Stable for 12 months at -20°C.
バッファー	<p>pH: 7.40</p> <p>Preservative: 0.02% Sodium azide</p> <p>Constituents: PBS, 50% Glycerol (glycerin, glycerine), 0.87% Sodium chloride</p> <p>Without Mg2+ and Ca2+</p>
精製度	Immunogen affinity purified
特記事項 (精製)	The antibody was affinity purified from rabbit antiserum by affinity chromatography using an epitope specific immunogen.
ポリ/モノ	ポリクローナル
アイソタイプ	IgG

## アプリケーション

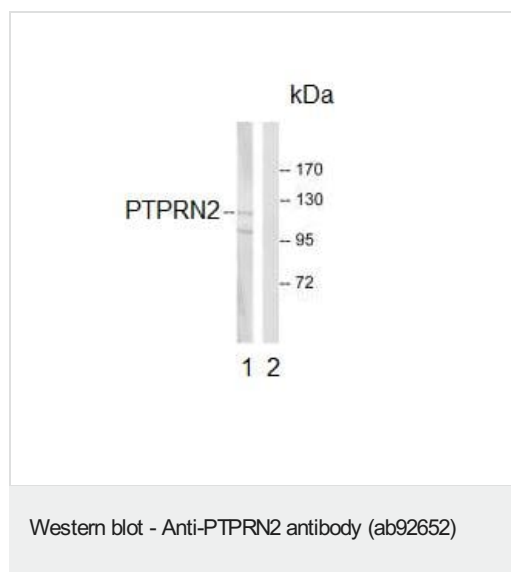
**The Abpromise guarantee**      **Abpromise保証は、**次のテスト済みアプリケーションにおけるab92652の使用に適用されます  
アプリケーションノートには、推奨の開始希釈率がありますが、適切な希釈率につきましてはご検討ください。

アプリケーション	Abreviews	特記事項
WB		1/500 - 1/1000. Predicted molecular weight: 111 kDa.

## ターゲット情報

機能	Implicated in development of nervous system and pancreatic endocrine cells.
組織特異性	Highest levels in brain and pancreas. Lower levels in trachea, prostate, stomach and spinal chord.
配列類似性	Belongs to the protein-tyrosine phosphatase family. Receptor class 8 subfamily. Contains 1 tyrosine-protein phosphatase domain.
ドメイン	The cytoplasmic domain appears to contain the autoantigenic epitopes.
翻訳後修飾	Appears to undergo multiple proteolytic cleavage at consecutive basic residues.
細胞内局在	Membrane.

## 画像



**All lanes :** Anti-PTPRN2 antibody (ab92652) at 1/500 dilution

**Lane 1 :** Extract from NIH/3T3 cells (without competing peptide)

**Lane 2 :** Extract from NIH/3T3 cells (with competing peptide)

Lysates/proteins at 5 µg per lane.

**Predicted band size:** 111 kDa

**Please note:** All products are "FOR RESEARCH USE ONLY. NOT FOR USE IN DIAGNOSTIC PROCEDURES"

## Our Abpromise to you: Quality guaranteed and expert technical support

- Replacement or refund for products not performing as stated on the datasheet
- Valid for 12 months from date of delivery
- Response to your inquiry within 24 hours

- We provide support in Chinese, English, French, German, Japanese and Spanish
- Extensive multi-media technical resources to help you
- We investigate all quality concerns to ensure our products perform to the highest standards

If the product does not perform as described on this datasheet, we will offer a refund or replacement. For full details of the Abpromise, please visit <https://www.abcam.co.jp/abpromise> or contact our technical team.

#### **Terms and conditions**

---

- Guarantee only valid for products bought direct from Abcam or one of our authorized distributors