


Anti-PTP1B (phospho S50) antibody ab88472

★★★★★ [1 Abreviews](#) [1 References](#) [画像数 1](#)

製品の概要

製品名	Anti-PTP1B (phospho S50) antibody
製品の詳細	Rabbit polyclonal to PTP1B (phospho S50)
由来種	Rabbit
特異性	ab88472 reactivity is observed as a weak singlet in control (untreated) cells and is not observed after lambda phosphatase treatment.
アプリケーション	適用あり: WB
種交差性	交差種: Human 交差が予測される動物種: Rat 
免疫原	Synthetic peptide corresponding to Human PTP1B (phospho S50).
特記事項	<p>The Life Science industry has been in the grips of a reproducibility crisis for a number of years. Abcam is leading the way in addressing this with our range of recombinant monoclonal antibodies and knockout edited cell lines for gold-standard validation. Please check that this product meets your needs before purchasing.</p> <p>If you have any questions, special requirements or concerns, please send us an inquiry and/or contact our Support team ahead of purchase. Recommended alternatives for this product can be found below, along with publications, customer reviews and Q&As</p>

製品の特性

製品の状態	Liquid
保存方法	Shipped at 4°C. Store at -20°C. Stable for 12 months at -20°C.
バッファー	Preservative: 0.05% Sodium azide Constituents: 0.1% BSA, 50% Glycerol, PBS
精製度	Immunogen affinity purified
ポリ/モノ	ポリクローナル
アイソタイプ	IgG

アプリケーション

The Abpromise guarantee

Abpromise保証は、 次のテスト済みアプリケーションにおけるab88472の使用に適用されます

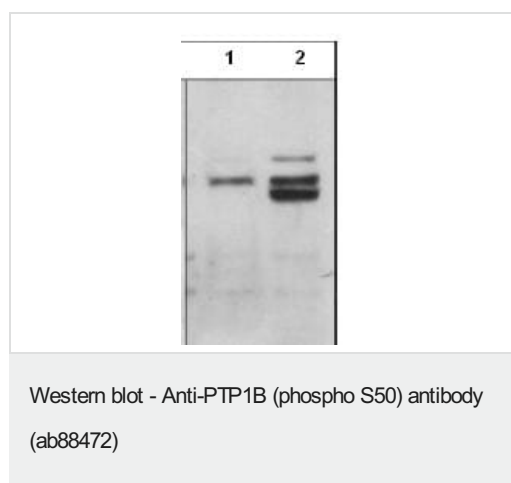
アプリケーションノートには、推奨の開始希釈率がありますが、適切な希釈率につきましてはご確認ください。

アプリケーション	Abreviews	特記事項
WB	★★★★★ (1)	1/1000. Detects a band of approximately 50 kDa (predicted molecular weight: 50 kDa).

ターゲット情報

機能	May play an important role in CKII- and p60c-src-induced signal transduction cascades.
配列類似性	Belongs to the protein-tyrosine phosphatase family. Non-receptor class 1 subfamily. Contains 1 tyrosine-protein phosphatase domain.
翻訳後修飾	Oxidized on Cys-215; the Cys-SOH formed in response to redox signaling reacts with the alpha-amido of the following residue to form a 4-amino-3-isothiazolidinone serine cross-link, triggering a conformational change that inhibits substrate binding and activity. The active site can be restored by reduction.
細胞内局在	Endoplasmic reticulum membrane.

画像



All lanes : Anti-PTP1B (phospho S50) antibody (ab88472) at 1/1000 dilution

Lane 1 : lysate from untreated Jurkat cells

Lane 2 : lysate from Jurkat cells treated with calyculin A (100 nM for 30 minutes)

Predicted band size: 50 kDa

Observed band size: 50 kDa

Please note: All products are "FOR RESEARCH USE ONLY. NOT FOR USE IN DIAGNOSTIC PROCEDURES"

Our Promise to you: Quality guaranteed and expert technical support

- Replacement or refund for products not performing as stated on the datasheet
- Valid for 12 months from date of delivery
- Response to your inquiry within 24 hours
- We provide support in Chinese, English, French, German, Japanese and Spanish
- Extensive multi-media technical resources to help you
- We investigate all quality concerns to ensure our products perform to the highest standards

If the product does not perform as described on this datasheet, we will offer a refund or replacement. For full details of the Abpromise, please visit <https://www.abcam.co.jp/abpromise> or contact our technical team.

Terms and conditions

- Guarantee only valid for products bought direct from Abcam or one of our authorized distributors