

# Anti-PTP1B (phospho S352) antibody [EP1839Y] ab62330

RabMAb

## 画像数 1

### 製品の概要

---

製品名	Anti-PTP1B (phospho S352) antibody [EP1839Y]
製品の詳細	Rabbit monoclonal [EP1839Y] to PTP1B (phospho S352)
由来種	Rabbit
アプリケーション	<b>適用あり:</b> WB <b>適用なし:</b> Flow Cyt
種交差性	<b>交差種:</b> Human
免疫原	Synthetic peptide. This information is proprietary to Abcam and/or its suppliers.
ポジティブ・コントロール	WB: HeLa cell lysate.
特記事項	<p>Our RabMAb<sup>®</sup> technology is a patented hybridoma-based technology for making rabbit monoclonal antibodies. For details on our patents, please refer to <a href="#">RabMAb<sup>®</sup> patents</a>.</p> <p>The Life Science industry has been in the grips of a reproducibility crisis for a number of years. Abcam is leading the way in addressing this with our range of recombinant monoclonal antibodies and knockout edited cell lines for gold-standard validation. Please check that this product meets your needs before purchasing.</p> <p>If you have any questions, special requirements or concerns, please send us an inquiry and/or contact our Support team ahead of purchase. Recommended alternatives for this product can be found below, along with publications, customer reviews and Q&amp;As</p> <p>Mouse, Rat: We have preliminary internal testing data to indicate this antibody may not react with these species. Please contact us for more information.</p>

### 製品の特性

---

製品の状態	Liquid
保存方法	Shipped at 4°C. Upon delivery aliquot and store at -20°C. Avoid freeze / thaw cycles.
バッファー	pH: 7.20 Preservative: 0.05% Sodium azide Constituents: 0.1% BSA, 40% Glycerol (glycerin, glycerine), 9.85% Tris glycine, 50% Tissue culture supernatant
精製度	Tissue culture supernatant

ポリ/モノ	モノクローナル
クローン名	EP1839Y
アイソタイプ	IgG

## アプリケーション

**The Abpromise guarantee**      **Abpromise保証は、次のテスト済みアプリケーションにおけるab62330の使用に適用されます**  
 アプリケーションノートには、推奨の開始希釈率がありますが、適切な希釈率につきましてはご検討ください。

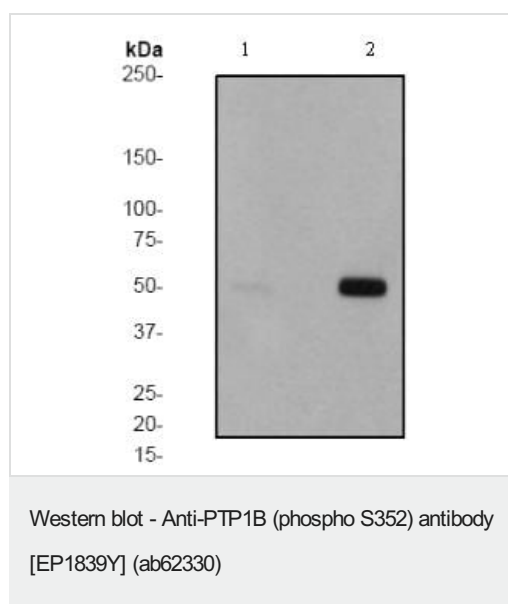
アプリケーション	Abreviews	特記事項
WB		1/2500 - 1/5000. Detects a band of approximately 50 kDa (predicted molecular weight: 50 kDa).

**追加情報**      Is unsuitable for Flow Cyt.

## ターゲット情報

<b>機能</b>	May play an important role in CKII- and p60c-src-induced signal transduction cascades.
<b>配列類似性</b>	Belongs to the protein-tyrosine phosphatase family. Non-receptor class 1 subfamily. Contains 1 tyrosine-protein phosphatase domain.
<b>翻訳後修飾</b>	Oxidized on Cys-215; the Cys-SOH formed in response to redox signaling reacts with the alpha-amido of the following residue to form a 4-amino-3-isothiazolidinone serine cross-link, triggering a conformational change that inhibits substrate binding and activity. The active site can be restored by reduction.
<b>細胞内局在</b>	Endoplasmic reticulum membrane.

## 画像



**All lanes :** Anti-PTP1B (phospho S352) antibody [EP1839Y] (ab62330) at 1/5000 dilution

**Lane 1 :** Hela cell lysates (untreated)

**Lane 2 :** Hela cell lysates (treated with Calyculin A)

Lysates/proteins at 10 µg per lane.

### Secondary

**All lanes :** Goat anti-Rabbit HRP conjugated at 1/2000 dilution

**Predicted band size:** 50 kDa

**Observed band size:** 50 kDa

**Please note:** All products are "FOR RESEARCH USE ONLY. NOT FOR USE IN DIAGNOSTIC PROCEDURES"

### **Our Abpromise to you: Quality guaranteed and expert technical support**

---

- Replacement or refund for products not performing as stated on the datasheet
- Valid for 12 months from date of delivery
- Response to your inquiry within 24 hours
  
- We provide support in Chinese, English, French, German, Japanese and Spanish
- Extensive multi-media technical resources to help you
- We investigate all quality concerns to ensure our products perform to the highest standards

If the product does not perform as described on this datasheet, we will offer a refund or replacement. For full details of the Abpromise, please visit <https://www.abcam.co.jp/abpromise> or contact our technical team.

### **Terms and conditions**

---

- Guarantee only valid for products bought direct from Abcam or one of our authorized distributors