


Anti-PTHLH antibody ab125700

1 Abbreviations 4 References 画像数 1

医薬用外劇物

製品の概要

製品名	Anti-PTHLH antibody
製品の詳細	Rabbit polyclonal to PTHLH
由来種	Rabbit
アプリケーション	適用あり: WB
種交差性	交差種: Human 交差が予測される動物種: Mouse, Rat, Rabbit, Cow, Dog, Pig 
免疫原	Recombinant fragment containing a sequence corresponding to a region within amino acids 1-127 of Human PTHLH.(Uniprot: P12272)
ポジティブ・コントロール	A549 cell lysate, HepG2 whole cell lysate (ab7900) and HTC116 cell lysate.
特記事項	<p>The Life Science industry has been in the grips of a reproducibility crisis for a number of years. Abcam is leading the way in addressing this with our range of recombinant monoclonal antibodies and knockout edited cell lines for gold-standard validation. Please check that this product meets your needs before purchasing.</p> <p>If you have any questions, special requirements or concerns, please send us an inquiry and/or contact our Support team ahead of purchase. Recommended alternatives for this product can be found below, along with publications, customer reviews and Q&As</p>

製品の特性

製品の状態	Liquid
保存方法	Shipped at 4°C. Upon delivery aliquot and store at -20°C or -80°C. Avoid repeated freeze / thaw cycles.
バッファー	pH: 7.00 Preservative: 0.01% Thimerosal (merthiolate) Constituents: 1.21% Tris, 0.75% Glycine, 20% Glycerol (glycerin, glycerine)
精製度	Immunogen affinity purified
ポリ/モノ	ポリクローナル
アイソタイプ	IgG

アプリケーション

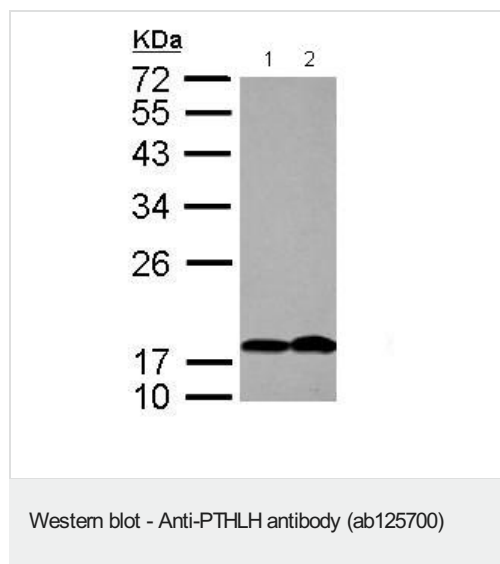
The Abpromise guarantee **Abpromise保証は、**次のテスト済みアプリケーションにおけるab125700の使用に適用されます
アプリケーションノートには、推奨の開始希釈率がありますが、適切な希釈率につきましてはご確認ください。

アプリケーション	Abreviews	特記事項
WB		1/500 - 1/3000. Predicted molecular weight: 20 kDa.

ターゲット情報

機能	Neuroendocrine peptide which is a critical regulator of cellular and organ growth, development, migration, differentiation and survival and of epithelial calcium ion transport. Regulates endochondral bone development and epithelial-mesenchymal interactions during the formation of the mammary glands and teeth. Required for skeletal homeostasis. Promotes mammary mesenchyme differentiation and bud outgrowth by modulating mesenchymal cell responsiveness to BMPs. Upregulates BMPR1A expression in the mammary mesenchyme and this increases the sensitivity of these cells to BMPs and allows them to respond to BMP4 in a paracrine and/or autocrine fashion. BMP4 signaling in the mesenchyme, in turn, triggers epithelial outgrowth and augments MSX2 expression, which causes the mammary mesenchyme to inhibit hair follicle formation within the nipple sheath (By similarity). Promotes colon cancer cell migration and invasion in an integrin alpha-6/beta-1-dependent manner through activation of Rac1. Osteostatin is a potent inhibitor of osteoclastic bone resorption.
組織特異性	Ubiquitous. Also expressed in the mammary gland.
関連疾患	Brachydactyly E2
配列類似性	Belongs to the parathyroid hormone family.
翻訳後修飾	There are 3 principal secretory forms, called PTHrP[1-36], PTHrP[38-94], and osteostatin (PTHrP[107-139]) arising from endoproteolytic cleavage of the initial translation product. Each of these secretory forms is believed to have one or more of its own receptors that mediates the normal paracrine, autocrine and endocrine actions.
細胞内局在	Cytoplasm. Nucleus. Secreted.

画像



All lanes : Anti-PTHLH antibody (ab125700) at 1/1000 dilution

Lane 1 : HepG2 lysate

Lane 2 : HCT116 lysate

Lysates/proteins at 30 µg per lane.

Predicted band size: 20 kDa

Please note: All products are "FOR RESEARCH USE ONLY. NOT FOR USE IN DIAGNOSTIC PROCEDURES"

Our Abpromise to you: Quality guaranteed and expert technical support

- Replacement or refund for products not performing as stated on the datasheet
- Valid for 12 months from date of delivery
- Response to your inquiry within 24 hours
- We provide support in Chinese, English, French, German, Japanese and Spanish
- Extensive multi-media technical resources to help you
- We investigate all quality concerns to ensure our products perform to the highest standards

If the product does not perform as described on this datasheet, we will offer a refund or replacement. For full details of the Abpromise, please visit <https://www.abcam.co.jp/abpromise> or contact our technical team.

Terms and conditions

- Guarantee only valid for products bought direct from Abcam or one of our authorized distributors