

Anti-PSPH antibody ab96414

3 References [画像数 2](#)

医薬用外劇物

製品の概要

製品名	Anti-PSPH antibody
製品の詳細	Rabbit polyclonal to PSPH
由来種	Rabbit
アプリケーション	適用あり: WB, ICC/IF
種交差性	交差種: Human 交差が予測される動物種: Mouse, Rat, Cow 
免疫原	Recombinant fragment corresponding to Human PSPH aa 1-195 (N terminal).
ポジティブ・コントロール	293T, A431, H1299, HeLa, HepG2, MOLT4, Raji cell lysates
特記事項	<p>The Life Science industry has been in the grips of a reproducibility crisis for a number of years. Abcam is leading the way in addressing this with our range of recombinant monoclonal antibodies and knockout edited cell lines for gold-standard validation. Please check that this product meets your needs before purchasing.</p> <p>If you have any questions, special requirements or concerns, please send us an inquiry and/or contact our Support team ahead of purchase. Recommended alternatives for this product can be found below, along with publications, customer reviews and Q&As</p>

製品の特性

製品の状態	Liquid
保存方法	Shipped at 4°C. Upon delivery aliquot and store at -20°C or -80°C. Avoid repeated freeze / thaw cycles.
バッファー	pH: 7.00 Preservative: 0.01% Thimerosal (merthiolate) Constituents: 1.21% Tris, 0.75% Glycine, 10% Glycerol (glycerin, glycerine)
精製度	Immunogen affinity purified
ポリ/モノ	ポリクローナル
アイソタイプ	IgG

アプリケーション

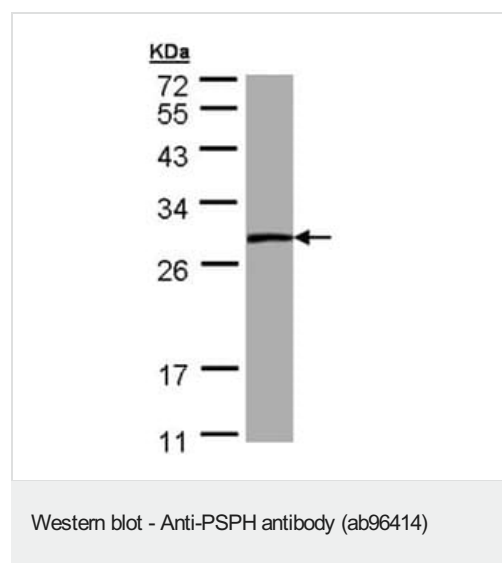
The Abpromise guarantee **Abpromise保証は、次のテスト済みアプリケーションにおけるab96414の使用に適用されます**
アプリケーションノートには、推奨の開始希釈率がありますが、適切な希釈率につきましてはご確認ください。

アプリケーション	Abreviews	特記事項
WB		1/500 - 1/3000. Predicted molecular weight: 25 kDa.
ICC/IF		1/100 - 1/200.

ターゲット情報

機能	Catalyzes the last step in the biosynthesis of serine from carbohydrates. The reaction mechanism proceeds via the formation of a phosphoryl-enzyme intermediates.
パスウェイ	Amino-acid biosynthesis; L-serine biosynthesis; L-serine from 3-phospho-D-glycerate: step 3/3.
関連疾患	Defects in PSPH are the cause of phosphoserine phosphatase deficiency (PSPHD) [MIM:614023]. A disorder that results in pre- and postnatal growth retardation, moderate psychomotor retardation and facial features suggestive of Williams syndrome.
配列類似性	Belongs to the SerB family.

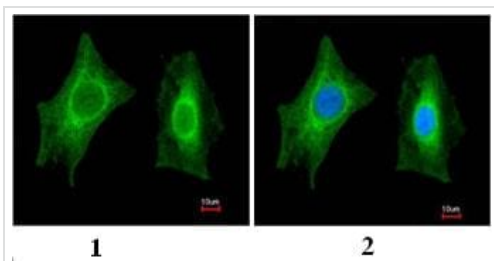
画像



Anti-PSPH antibody (ab96414) at 1/1000 dilution + A431 whole cell lysate at 30 µg

Predicted band size: 25 kDa

12% SDS PAGE



Immunofluorescence analysis of paraformaldehyde-fixed A549 using ab96414 at 1:200 dilution: (1) without DNA probe, (2) merged with a DNA probe.

Immunocytochemistry/ Immunofluorescence - Anti-PSPH antibody (ab96414)

Please note: All products are "FOR RESEARCH USE ONLY. NOT FOR USE IN DIAGNOSTIC PROCEDURES"

Our Abpromise to you: Quality guaranteed and expert technical support

- Replacement or refund for products not performing as stated on the datasheet
- Valid for 12 months from date of delivery
- Response to your inquiry within 24 hours
- We provide support in Chinese, English, French, German, Japanese and Spanish
- Extensive multi-media technical resources to help you
- We investigate all quality concerns to ensure our products perform to the highest standards

If the product does not perform as described on this datasheet, we will offer a refund or replacement. For full details of the Abpromise, please visit <https://www.abcam.co.jp/abpromise> or contact our technical team.

Terms and conditions

- Guarantee only valid for products bought direct from Abcam or one of our authorized distributors