

### Anti-Psoriasin antibody [47C1068] ab13680

★★★★★ [2 Abreviews](#) [25 References](#) [画像数 5](#)

#### 製品の概要

製品名	Anti-Psoriasin antibody [47C1068]
製品の詳細	Mouse monoclonal [47C1068] to Psoriasin
由来種	Mouse
アプリケーション	<b>適用あり:</b> IP, ICC/IF, Flow Cyt, IHC-Fr, Flow Cyt (Intra), WB, IHC-P
種交差性	<b>交差種:</b> Human
免疫原	Recombinant full length protein corresponding to Human Psoriasin. Database link: <a href="#">P31151</a>
ポジティブ・コントロール	Confluent MCF10A cells.
特記事項	<p>The Life Science industry has been in the grips of a reproducibility crisis for a number of years. Abcam is leading the way in addressing this with our range of recombinant monoclonal antibodies and knockout edited cell lines for gold-standard validation. Please check that this product meets your needs before purchasing.</p> <p>If you have any questions, special requirements or concerns, please send us an inquiry and/or contact our Support team ahead of purchase. Recommended alternatives for this product can be found below, along with publications, customer reviews and Q&amp;As</p>

#### 製品の特性

製品の状態	Liquid
保存方法	Shipped at 4°C. Store at +4°C short term (1-2 weeks). Upon delivery aliquot. Store at -20°C or -80°C. Avoid freeze / thaw cycle.
バッファー	pH: 7.40 Preservative: 0.05% Sodium azide Constituents: PBS, 0.05% BSA
精製度	Protein G purified
特記事項(精製)	This antibody is affinity purified.
ポリ/モノ	モノクローナル
クローン名	47C1068
アイソタイプ	IgG1
軽鎖の種類	kappa

## アプリケーション

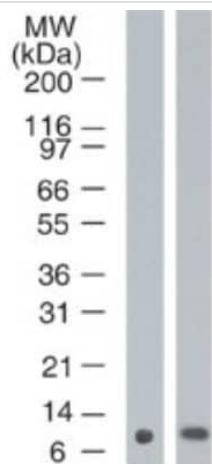
**The Abpromise guarantee**      Abpromise保証は、次のテスト済みアプリケーションにおけるab13680の使用に適用されます  
アプリケーションノートには、推奨の開始希釈率がありますが、適切な希釈率につきましてはご検討ください。

アプリケーション	Abreviews	特記事項
IP		Use at an assay dependent concentration.
ICC/IF		Use a concentration of 5 µg/ml.
Flow Cyt	★★★★★ (1)	Use at an assay dependent concentration. <b>ab170190</b> - Mouse monoclonal IgG1, is suitable for use as an isotype control with this antibody.
IHC-Fr	★★★★★ (1)	Use at an assay dependent concentration. (PMID 18606705).
Flow Cyt (Intra)		Use at an assay dependent concentration.
WB		Use a concentration of 1 - 3 µg/ml. Detects a band of approximately 11 kDa (predicted molecular weight: 12.1 kDa).
IHC-P		Use at an assay dependent concentration. Perform heat mediated antigen retrieval before commencing with IHC staining protocol.

## ターゲット情報

組織特異性	Fetal ear, skin, and tongue and human cell lines. Highly up-regulated in psoriatic epidermis. Also highly expressed in the urine of bladder squamous cell carcinoma (SCC) bearing patients.
配列類似性	Belongs to the S-101 family. Contains 2 EF-hand domains.
細胞内局在	Cytoplasm. Secreted. Secreted by a non-classical secretory pathway.

## 画像



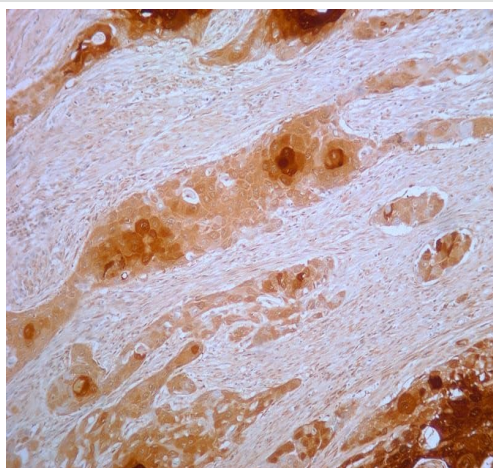
Western blot - Anti-Psoriasin antibody [47C1068]  
(ab13680)

**All lanes :** Anti-Psoriasin antibody [47C1068] (ab13680) at 1 µg/ml

**Lane 1 :** MCF10A cell lysate

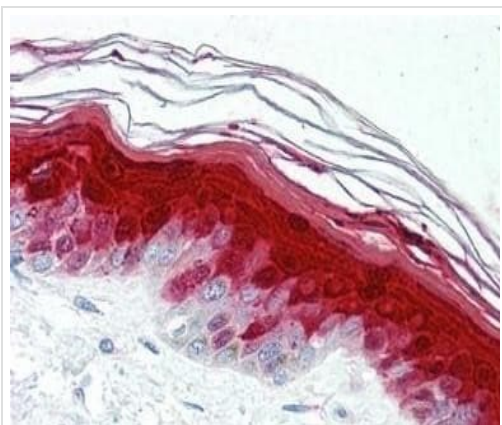
**Lane 2 :** MCF7 cell lysate

**Predicted band size:** 12.1 kDa



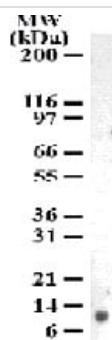
Immunohistochemistry (Formalin/PFA-fixed paraffin-  
embedded sections) - Anti-Psoriasin antibody  
[47C1068] (ab13680)

Immunohistochemistry analysis of human esophageal squamous  
cell carcinoma (SCC) staining psoriasin with ab13680 in 5 µg/mL  
concentration.



Immunohistochemistry (Formalin/PFA-fixed paraffin-embedded sections) - Anti-Psoriasin antibody [47C1068] (ab13680)

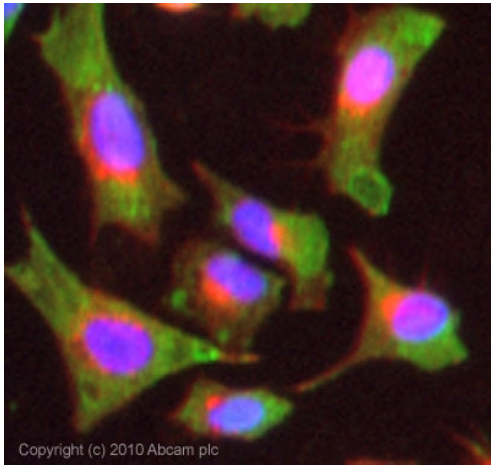
Immunohistochemistry analysis of formalin-fixed paraffin-embedded human skin tissue after heat-induced antigen retrieval, staining psoriasin with ab13680 in 10 µg/mL concentration.



Western blot - Anti-Psoriasin antibody [47C1068] (ab13680)

Western blot analysis of Psoriasin in confluent MCF10A cells using ab13680 at 1 µg/ml.

Western blot analysis of Psoriasin in confluent MCF10A cells using ab13680 at 1 µg/ml.



Immunocytochemistry/ Immunofluorescence - Anti-Psoriasin antibody [47C1068] (ab13680)

ICC/IF image of ab13680 stained HeLa cells. The cells were 4% formaldehyde fixed (10 min) and then incubated in 1%BSA / 10% normal goat serum / 0.3M glycine in 0.1% PBS-Tween for 1h to permeabilise the cells and block non-specific protein-protein interactions. The cells were then incubated with the antibody (ab13680, 5µg/ml) overnight at +4°C. The secondary antibody (green) was Alexa Fluor® 488 goat anti-mouse IgG (H+L) used at a 1/1000 dilution for 1h. Alexa Fluor® 594 WGA was used to label plasma membranes (red) at a 1/200 dilution for 1h. DAPI was used to stain the cell nuclei (blue) at a concentration of 1.43µM.

**Please note:** All products are "FOR RESEARCH USE ONLY. NOT FOR USE IN DIAGNOSTIC PROCEDURES"

### Our Abpromise to you: Quality guaranteed and expert technical support

- Replacement or refund for products not performing as stated on the datasheet
- Valid for 12 months from date of delivery
- Response to your inquiry within 24 hours
- We provide support in Chinese, English, French, German, Japanese and Spanish
- Extensive multi-media technical resources to help you
- We investigate all quality concerns to ensure our products perform to the highest standards

If the product does not perform as described on this datasheet, we will offer a refund or replacement. For full details of the Abpromise, please visit <https://www.abcam.co.jp/abpromise> or contact our technical team.

### Terms and conditions

- Guarantee only valid for products bought direct from Abcam or one of our authorized distributors