


# Anti-PSMD14 antibody [EPR4258] ab109130

リコンビナント RabMAb<sup>®</sup>

## 2 References [画像数 3](#)

### 製品の概要

製品名	Anti-PSMD14 antibody [EPR4258]
製品の詳細	Rabbit monoclonal [EPR4258] to PSMD14
由来種	Rabbit
アプリケーション	<b>適用あり:</b> WB, IP <b>適用なし:</b> Flow Cyt, ICC/IF or IHC-P
種交差性	<b>交差種:</b> Human <b>交差が予測される動物種:</b> Mouse, Rat 
免疫原	Synthetic peptide. This information is proprietary to Abcam and/or its suppliers.
ポジティブ・コントロール	WB: HepG2, A431, K562, Namalwa, HeLa, and MCF7 cell lysates. IP: K-562 cell lysate.
特記事項	This product is a recombinant monoclonal antibody, which offers several advantages including: <ul style="list-style-type: none"><li>- High batch-to-batch consistency and reproducibility</li><li>- Improved sensitivity and specificity</li><li>- Long-term security of supply</li><li>- Animal-free production</li></ul> For more information <a href="#">see here</a> . Our RabMAb <sup>®</sup> technology is a patented hybridoma-based technology for making rabbit monoclonal antibodies. For details on our patents, please refer to <a href="#">RabMAb<sup>®</sup> patents</a> .

### 製品の特性

製品の状態	Liquid
保存方法	Shipped at 4°C. Store at -20°C. Stable for 12 months at -20°C.
バッファー	pH: 7.20 Preservative: 0.05% Sodium azide Constituents: 0.1% BSA, 40% Glycerol (glycerin, glycerine), 9.85% Tris glycine, 50% Tissue culture supernatant
精製度	Protein A purified
ポリ/モノ	モノクローナル
クローン名	EPR4258

## アプリケーション

**The Abpromise guarantee** **Abpromise保証は、次のテスト済みアプリケーションにおけるab109130の使用に適用されず**  
アプリケーションノートには、推奨の開始希釈率がありますが、適切な希釈率につきましてはご検討ください。

アプリケーション	Abreviews	特記事項
WB		1/1000 - 1/10000. Detects a band of approximately 35 kDa (predicted molecular weight: 35 kDa).
IP		1/30.

## 追加情報

Is unsuitable for Flow Cyt, ICC/IF or IHC-P.

## ターゲット情報

## 機能

Metalloprotease component of the 26S proteasome that specifically cleaves 'Lys-63'-linked polyubiquitin chains. The 26S proteasome is involved in the ATP-dependent degradation of ubiquitinated proteins. The function of the 'Lys-63'-specific deubiquitination of the proteasome is unclear.

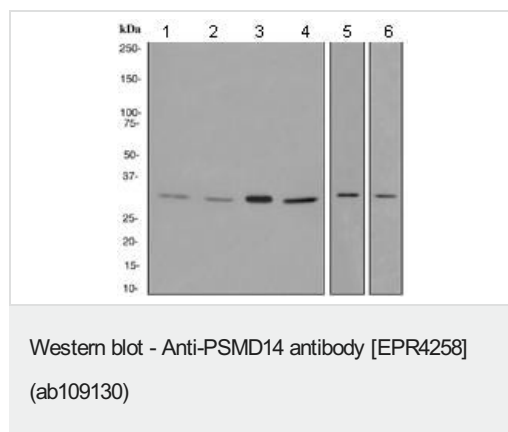
## 組織特異性

Widely expressed. Highest levels in heart and skeletal muscle.

## 配列類似性

Belongs to the peptidase M67A family, PSMD14 subfamily.  
Contains 1 MPN (JAB/Mov34) domain.

## 画像



**All lanes** : Anti-PSMD14 antibody [EPR4258] (ab109130) at 1/1000 dilution

**Lane 1** : HepG2 cell lysate

**Lane 2** : A431 cell lysate

**Lane 3** : K562 cell lysate

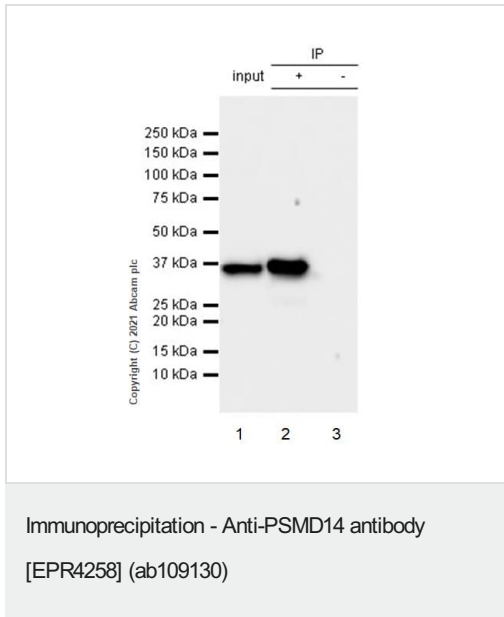
**Lane 4** : Namalwa cell lysate

**Lane 5** : HeLa cell lysate

**Lane 6** : MCF7 cell lysate

Lysates/proteins at 10 µg per lane.

**Predicted band size:** 35 kDa



PSMD14 was immunoprecipitated from 0.35 mg K-562 (Human chronic myelogenous leukemia lymphoblast) whole cell lysate 10 µg with 109130 at 1/50 dilution (2µg). VeriBlot for IP Detection Reagent (HRP)([ab131366](#)) was used at 1/5000 dilution.





Lane 1: K-562 (Human chronic myelogenous leukemia lymphoblast) whole cell lysate 10 µg

Lane 2: ab109130 IP in K-562 whole cell lysate

Lane 3: Rabbit monoclonal IgG ([ab172730](#)) instead of ab109130 in K-562 whole cell lysate

Blocking and dilution buffer and concentration: 5% NFDN/TBST.

Why choose a recombinant antibody?

 <p><b>Research with confidence</b> Consistent and reproducible results</p>	 <p><b>Long-term and scalable supply</b> Recombinant technology</p>
 <p><b>Success from the first experiment</b> Confirmed specificity</p>	 <p><b>Ethical standards compliant</b> Animal-free production</p>

Anti-PSMD14 antibody [EPR4258] (ab109130)

**Please note:** All products are "FOR RESEARCH USE ONLY. NOT FOR USE IN DIAGNOSTIC PROCEDURES"

### Our Abpromise to you: Quality guaranteed and expert technical support

- Replacement or refund for products not performing as stated on the datasheet
- Valid for 12 months from date of delivery
- Response to your inquiry within 24 hours
- We provide support in Chinese, English, French, German, Japanese and Spanish
- Extensive multi-media technical resources to help you
- We investigate all quality concerns to ensure our products perform to the highest standards

If the product does not perform as described on this datasheet, we will offer a refund or replacement. For full details of the Abpromise, please visit <https://www.abcam.co.jp/abpromise> or contact our technical team.

## Terms and conditions

---

- Guarantee only valid for products bought direct from Abcam or one of our authorized distributors