


Anti-PSMD14 antibody [EPR4257] ab109123

リコンビナント **RabMAb**

★★★★★ **2 Abreviews** **4 References** 画像数 4

製品の概要

製品名	Anti-PSMD14 antibody [EPR4257]
製品の詳細	Rabbit monoclonal [EPR4257] to PSMD14
由来種	Rabbit
アプリケーション	適用あり: WB, IHC-P, ICC/IF 適用なし: Flow Cyt or IP
種交差性	交差種: Human 交差が予測される動物種: Mouse, Rat 
免疫原	Synthetic peptide. This information is proprietary to Abcam and/or its suppliers.
ポジティブ・コントロール	HepG2, A431, HeLa, Namalwa, K562 and MCF7 cell lysates; Human colon tissue; HeLa cells.
特記事項	This product is a recombinant monoclonal antibody, which offers several advantages including: <ul style="list-style-type: none"> - High batch-to-batch consistency and reproducibility - Improved sensitivity and specificity - Long-term security of supply - Animal-free production For more information see here . Our RabMAb [®] technology is a patented hybridoma-based technology for making rabbit monoclonal antibodies. For details on our patents, please refer to RabMAb[®] patents .

製品の特性

製品の状態	Liquid
保存方法	Shipped at 4°C. Store at -20°C. Stable for 12 months at -20°C.
バッファー	pH: 7.20 Preservative: 0.05% Sodium azide Constituents: 0.1% BSA, 40% Glycerol (glycerin, glycerine), 9.85% Tris glycine, 50% Tissue culture supernatant
精製度	Protein A purified
ポリ/モノ	モノクローナル
クローン名	EPR4257

アイソタイプIgG

アプリケーション

The Abpromise guarantee Abpromise保証は、 次のテスト済みアプリケーションにおけるab109123の使用に適用されます
アプリケーションノートには、推奨の開始希釈率がありますが、適切な希釈率につきましてはご検討ください。

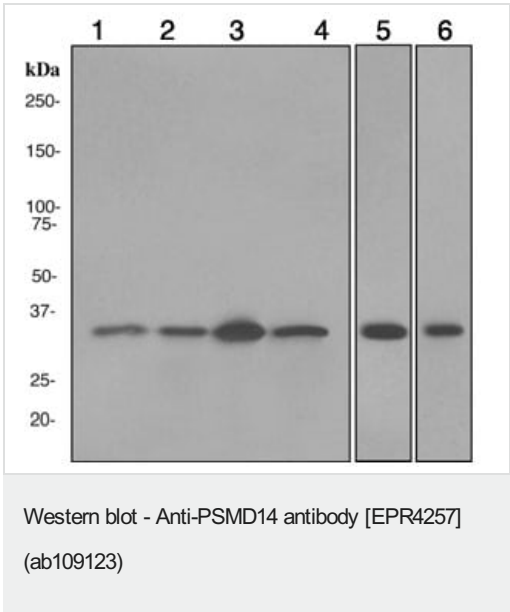
アプリケーション	Abreviews	特記事項
WB	★★★★★ (2)	1/1000 - 1/10000. Predicted molecular weight: 35 kDa.
IHC-P		1/500 - 1/1000. Perform heat mediated antigen retrieval before commencing with IHC staining protocol. (Heat to 98°C allow to cool for 10-20 min).
ICC/IF		1/500 - 1/1000.

追加情報 Is unsuitable for Flow Cyt or IP.

ターゲット情報

機能	Metalloprotease component of the 26S proteasome that specifically cleaves 'Lys-63'-linked polyubiquitin chains. The 26S proteasome is involved in the ATP-dependent degradation of ubiquitinated proteins. The function of the 'Lys-63'-specific deubiquitination of the proteasome is unclear.
組織特異性	Widely expressed. Highest levels in heart and skeletal muscle.
配列類似性	Belongs to the peptidase M67A family. PSMD14 subfamily. Contains 1 MPN (JAB/Mov34) domain.

画像



All lanes : Anti-PSMD14 antibody [EPR4257] (ab109123) at 1/1000 dilution

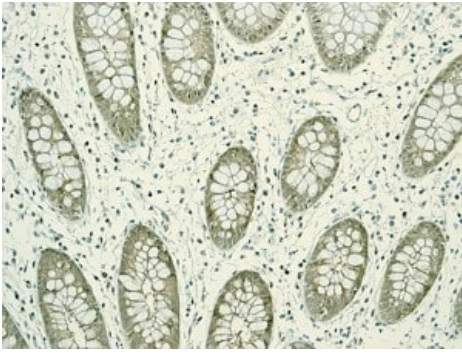
- Lane 1 :** Hep G2 (Human liver hepatocellular carcinoma cell line) whole cell lysate
- Lane 2 :** A-431 (Human epidermoid carcinoma cell line) whole cell lysate
- Lane 3 :** HeLa (Human cervix adenocarcinoma epithelial cell) whole cell lysate
- Lane 4 :** Namalwa (Burkitt's lymphoma cell line) whole cell lysates
- Lane 5 :** K-562 (Human chronic myelogenous leukemia lymphoblast cell line) whole cell lysate
- Lane 6 :** MCF7 (Human breast adenocarcinoma cell line) whole cell lysate

Lysates/proteins at 10 µg per lane.

Secondary

All lanes : HRP labelled Goat anti-Rabbit at 1/2000 dilution

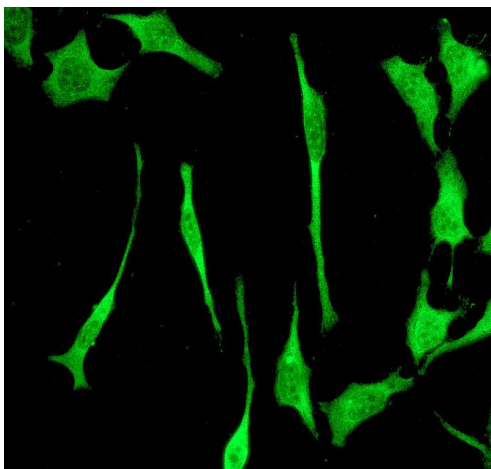
Predicted band size: 35 kDa



Immunohistochemistry (Formalin/PFA-fixed paraffin-embedded sections) - Anti-PSMD14 antibody [EPR4257] (ab109123)

ab109123, at 1/500 dilution staining PSMD14 in paraffin-embedded Human colon tissue, by Immunohistochemistry.

Perform heat mediated antigen retrieval before commencing with IHC staining protocol.



Immunocytochemistry/ Immunofluorescence - Anti-PSMD14 antibody [EPR4257] (ab109123)

ab109123, at 1/500 dilution, staining PSMD14 in HeLa cells by Immunofluorescence.

Why choose a recombinant antibody?



Research with confidence
Consistent and reproducible results



Long-term and scalable supply
Recombinant technology



Success from the first experiment
Confirmed specificity



Ethical standards compliant
Animal-free production

Anti-PSMD14 antibody [EPR4257] (ab109123)

Please note: All products are "FOR RESEARCH USE ONLY. NOT FOR USE IN DIAGNOSTIC PROCEDURES"

Our Abpromise to you: Quality guaranteed and expert technical support

- Replacement or refund for products not performing as stated on the datasheet
- Valid for 12 months from date of delivery
- Response to your inquiry within 24 hours
- We provide support in Chinese, English, French, German, Japanese and Spanish
- Extensive multi-media technical resources to help you
- We investigate all quality concerns to ensure our products perform to the highest standards

If the product does not perform as described on this datasheet, we will offer a refund or replacement. For full details of the Abpromise, please visit <https://www.abcam.co.jp/abpromise> or contact our technical team.

Terms and conditions

- Guarantee only valid for products bought direct from Abcam or one of our authorized distributors