


### Anti-PSMD11 antibody ab99413

★★★★★ [5 Abreviews](#) [1 References](#) [画像数 2](#)

#### 製品の概要

製品名	Anti-PSMD11 antibody
製品の詳細	Rabbit polyclonal to PSMD11
由来種	Rabbit
アプリケーション	<b>適用あり:</b> WB, IP
種交差性	<b>交差種:</b> Mouse, Human <b>交差が予測される動物種:</b> Rat, Rabbit, Guinea pig, Cow, Dog, Turkey, Pig, Chimpanzee, Drosophila melanogaster, Zebrafish, Rhesus monkey, Gorilla, Orangutan, Xenopus tropicalis 
免疫原	Synthetic peptide, corresponding to a region within amino acids 175-225 of Human PSMD11 (NP_002806.2).
ポジティブ・コントロール	Human HeLa and 293T cell lines. Mouse NIH3T3 cell line.
特記事項	<p>The Life Science industry has been in the grips of a reproducibility crisis for a number of years. Abcam is leading the way in addressing this with our range of recombinant monoclonal antibodies and knockout edited cell lines for gold-standard validation. Please check that this product meets your needs before purchasing.</p> <p>If you have any questions, special requirements or concerns, please send us an inquiry and/or contact our Support team ahead of purchase. Recommended alternatives for this product can be found below, along with publications, customer reviews and Q&amp;As</p>

#### 製品の特性

製品の状態	Liquid
保存方法	Shipped at 4°C. Upon delivery aliquot and store at -20°C. Avoid freeze / thaw cycles.
バッファー	pH: 6.8 Preservative: 0.09% Sodium azide Constituents: 0.1% BSA, Tris buffered saline
精製度	Immunogen affinity purified
ポリ/モノ	ポリクローナル
アイソタイプ	IgG

## アプリケーション

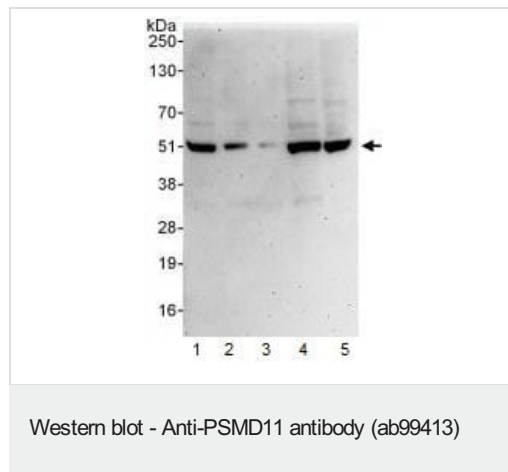
**The Abpromise guarantee**      **Abpromise保証は、** 次のテスト済みアプリケーションにおけるab99413の使用に適用されます  
アプリケーションノートには、推奨の開始希釈率がありますが、適切な希釈率につきましてはご検討ください。

アプリケーション	Abreviews	特記事項
WB	★★★★★ (3)	1/2000 - 1/10000. Predicted molecular weight: 47 kDa.
IP	★★★★★ (2)	Use at 2-5 µg/mg of lysate.

## ターゲット情報

機能	Component of the lid subcomplex of the 26S proteasome, a multiprotein complex involved in the ATP-dependent degradation of ubiquitinated proteins. In the complex, PSMD11 is required for proteasome assembly. Plays a key role in increased proteasome activity in embryonic stem cells (ESCs): its high expression in ESCs promotes enhanced assembly of the 26S proteasome, followed by higher proteasome activity.
組織特異性	Highly expressed in embryonic stem cells (ESCs). Expression decreases as ESCs differentiate.
配列類似性	Belongs to the proteasome subunit S9 family. Contains 1 PCI domain.
翻訳後修飾	Phosphorylated by AMPK.
細胞内局在	Nucleus. Cytoplasm > cytosol.

## 画像



**All lanes :** Anti-PSMD11 antibody (ab99413) at 0.04 µg/ml

**Lane 1 :** Hela whole cell lysate at 50 µg

**Lane 2 :** Hela whole cell lysate at 15 µg

**Lane 3 :** Hela whole cell lysate at 5 µg

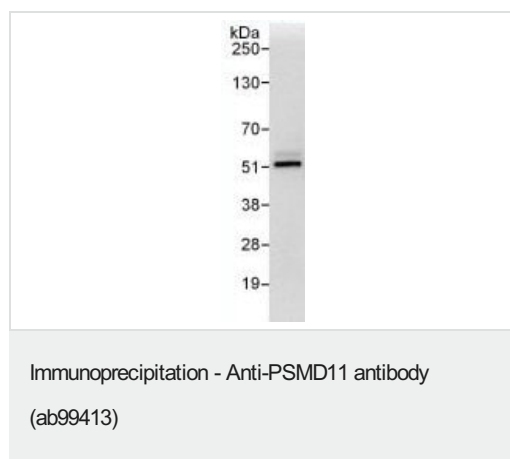
**Lane 4 :** 293T whole cell lysate at 50 µg

**Lane 5 :** NIH3T3 whole cell lysate at 50 µg

Developed using the ECL technique.

**Predicted band size:** 47 kDa

**Exposure time:** 3 minutes



**Immunoprecipitation :** 1 mg of HeLa cell lysate

immunoprecipitated with ab99413 at 3 µg/mg lysate; 20% of immunoprecipitate loaded in lane

**Western Blot:** anti-PSMD11 antibody (ab99413) at 0.4 µg/ml

developed using the ECL technique

**Exposure time :** 10 seconds

**Predicted band size :** 47 kDa

**Please note:** All products are "FOR RESEARCH USE ONLY. NOT FOR USE IN DIAGNOSTIC PROCEDURES"

### Our Abpromise to you: Quality guaranteed and expert technical support

---

- Replacement or refund for products not performing as stated on the datasheet
- Valid for 12 months from date of delivery
- Response to your inquiry within 24 hours
- We provide support in Chinese, English, French, German, Japanese and Spanish
- Extensive multi-media technical resources to help you
- We investigate all quality concerns to ensure our products perform to the highest standards

If the product does not perform as described on this datasheet, we will offer a refund or replacement. For full details of the Abpromise, please visit <https://www.abcam.co.jp/abpromise> or contact our technical team.

### Terms and conditions

---

- Guarantee only valid for products bought direct from Abcam or one of our authorized distributors