

Anti-PSMB5/MB1 antibody ab3330

★★★★★ [4 Abreviews](#) [38 References](#) [画像数 4](#)

製品の概要

製品名	Anti-PSMB5/MB1 antibody
製品の詳細	Rabbit polyclonal to PSMB5/MB1
由来種	Rabbit
特異性	Detects proteasome PSMB5/MB1.
アプリケーション	適用あり: WB, ICC
種交差性	交差種: Mouse, Cow, Human
免疫原	Synthetic peptide corresponding to Mouse PSMB5/MB1 aa 200 to the C-terminus. Database link: O55234

 [Run BLAST with](#)

 [Run BLAST with](#)

特記事項

The Life Science industry has been in the grips of a reproducibility crisis for a number of years. Abcam is leading the way in addressing this with our range of recombinant monoclonal antibodies and knockout edited cell lines for gold-standard validation. Please check that this product meets your needs before purchasing.

If you have any questions, special requirements or concerns, please send us an inquiry and/or contact our Support team ahead of purchase. Recommended alternatives for this product can be found below, along with publications, customer reviews and Q&As

製品の特性

製品の状態	Liquid
保存方法	Shipped at 4°C. Store at +4°C short term (1-2 weeks). Upon delivery aliquot. Store at -20°C or -80°C. Avoid freeze / thaw cycle.
バッファー	Constituents: 0.1% BSA, 99% PBS
精製度	Immunogen affinity purified
ポリ/モノ	ポリクローナル
アイソタイプ	IgG

アプリケーション

The Abpromise guarantee

Abpromise保証は、 次のテスト済みアプリケーションにおけるab3330の使用に適用されます

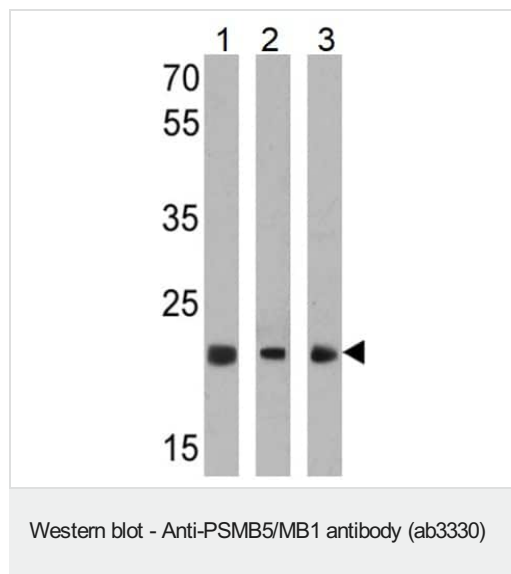
アプリケーションノートには、推奨の開始希釈率がありますが、適切な希釈率につきましてはご確認ください。

アプリケーション	Abreviews	特記事項
WB	★★★★★ (4)	1/500 - 1/5000. Detects a band of approximately 22 kDa.
ICC		1/10 - 1/200.

ターゲット情報

機能	The proteasome is a multicatalytic proteinase complex which is characterized by its ability to cleave peptides with Arg, Phe, Tyr, Leu, and Glu adjacent to the leaving group at neutral or slightly basic pH. The proteasome has an ATP-dependent proteolytic activity. This unit is responsible of the chymotrypsin-like activity of the proteasome and is one of the principal target of the proteasome inhibitor bortezomib. May catalyze basal processing of intracellular antigens. Plays a role in the protection against oxidative damage through the Nrf2-ARE pathway.
配列類似性	Belongs to the peptidase T1B family.
細胞内局在	Cytoplasm. Nucleus.

画像



All lanes : Anti-PSMB5/MB1 antibody (ab3330) at 1/1000 dilution

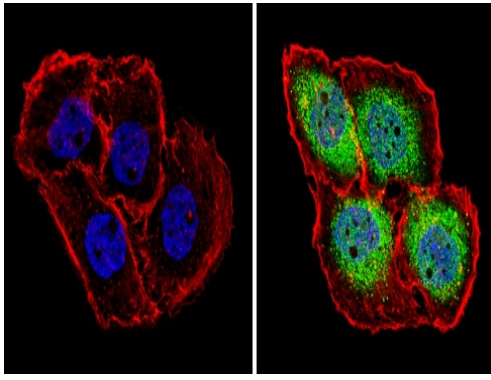
Lane 1 : NCI-H1299 (Human lung carcinoma cell line) whole cell lysate

Lane 2 : HeLa (Human epithelial adenocarcinoma cell line) whole cell lysate

Lane 3 : Mouse liver cell lysate

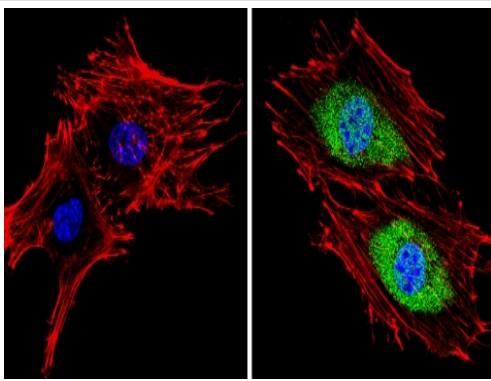
Lysates/proteins at 25 µg per lane.

Observed band size: 23 kDa



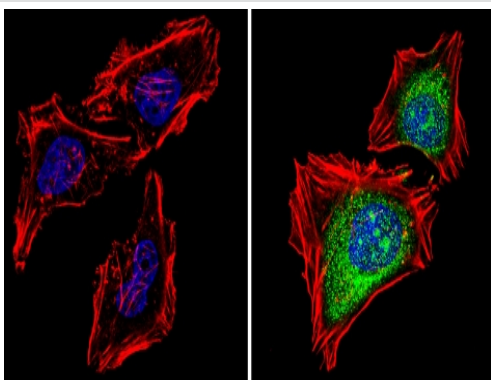
Immunocytochemistry - Anti-PSMB5/MB1 antibody
(ab3330)

Immunocytochemistry/Immunofluorescence analysis of PSMB5/MB1 (green) showing staining in the cytoplasm and nucleus of A431 (Human epidermoid carcinoma cell line) cells (right) compared to a negative control without primary antibody (left). Formalin-fixed cells were permeabilized with 0.1% Triton X-100 in TBS for 5-10 minutes and blocked with 3% BSA-PBS for 30 minutes at room temperature. Cells were incubated with ab3330 in 3% BSA-PBS at a dilution of 1:100 and incubated overnight at 4°C in a humidified chamber. Cells were washed with PBST and incubated with a DyLight-conjugated secondary antibody in PBS at room temperature in the dark. F-actin (red) was stained with a fluorescent red phalloidin and nuclei (blue) were stained with Hoechst or DAPI. Images were taken at a magnification of 60x.



Immunocytochemistry - Anti-PSMB5/MB1 antibody
(ab3330)

Immunocytochemistry/Immunofluorescence analysis of PSMB5/MB1 (green) showing staining in the cytoplasm and nucleus of BAEC (Bovine aortic endothelial cell line) cells (right) compared to a negative control without primary antibody (left). Formalin-fixed cells were permeabilized with 0.1% Triton X-100 in TBS for 5-10 minutes and blocked with 3% BSA-PBS for 30 minutes at room temperature. Cells were incubated with ab3330 in 3% BSA-PBS at a dilution of 1:100 and incubated overnight at 4°C in a humidified chamber. Cells were washed with PBST and incubated with a DyLight-conjugated secondary antibody in PBS at room temperature in the dark. F-actin (red) was stained with a fluorescent red phalloidin and nuclei (blue) were stained with Hoechst or DAPI. Images were taken at a magnification of 60x.



Immunocytochemistry - Anti-PSMB5/MB1 antibody
(ab3330)

Immunocytochemistry/Immunofluorescence analysis of PSMB5/MB1 (green) showing staining in the cytoplasm and nucleus of HeLa (Human epithelial adenocarcinoma cell line) cells (right) compared to a negative control without primary antibody (left). Formalin-fixed cells were permeabilized with 0.1% Triton X-100 in TBS for 5-10 minutes and blocked with 3% BSA-PBS for 30 minutes at room temperature. Cells were incubated with ab3330 in 3% BSA-PBS at a dilution of 1:100 and incubated overnight at 4°C in a humidified chamber. Cells were washed with PBST and incubated with a DyLight-conjugated secondary antibody in PBS at room temperature in the dark. F-actin (red) was stained with a fluorescent red phalloidin and nuclei (blue) were stained with Hoechst or DAPI. Images were taken at a magnification of 60x.

Our Abpromise to you: Quality guaranteed and expert technical support

- Replacement or refund for products not performing as stated on the datasheet
- Valid for 12 months from date of delivery
- Response to your inquiry within 24 hours

- We provide support in Chinese, English, French, German, Japanese and Spanish
- Extensive multi-media technical resources to help you
- We investigate all quality concerns to ensure our products perform to the highest standards

If the product does not perform as described on this datasheet, we will offer a refund or replacement. For full details of the Abpromise, please visit <https://www.abcam.co.jp/abpromise> or contact our technical team.

Terms and conditions

- Guarantee only valid for products bought direct from Abcam or one of our authorized distributors