


Anti-PSMB10/MECL1 antibody [EPR14902] ab183506

KO 評価済 リコンビナント RabMAb

12 References 画像数 6

製品の概要

製品名	Anti-PSMB10/MECL1 antibody [EPR14902]
製品の詳細	Rabbit monoclonal [EPR14902] to PSMB10/MECL1
由来種	Rabbit
アプリケーション	適用あり: Flow Cyt (Intra), WB, IHC-P
種交差性	交差種: Human 交差が予測される動物種: Mouse, Rat 
免疫原	Synthetic peptide. This information is proprietary to Abcam and/or its suppliers.
ポジティブ・コントロール	WB: HeLa, Daudi, HuT 78 and Raji cell lysates; Human fetal spleen and thymus tissue lysates. IHC-P: Human kidney adenocarcinoma tissue. Flow Cyt (intra): Daudi cells.
特記事項	This product is a recombinant monoclonal antibody, which offers several advantages including: <ul style="list-style-type: none"> - High batch-to-batch consistency and reproducibility - Improved sensitivity and specificity - Long-term security of supply - Animal-free production For more information see here . Our RabMAb [®] technology is a patented hybridoma-based technology for making rabbit monoclonal antibodies. For details on our patents, please refer to RabMAb[®] patents .

製品の特性

製品の状態	Liquid
保存方法	Shipped at 4°C. Store at +4°C short term (1-2 weeks). Upon delivery aliquot. Store at -20°C long term. Avoid freeze / thaw cycle.
バッファー	pH: 7.2 Preservative: 0.01% Sodium azide Constituents: 59% PBS, 40% Glycerol, 0.05% BSA
精製度	Protein A purified
ポリ/モノ	モノクローナル
クローン名	EPR14902

アプリケーション

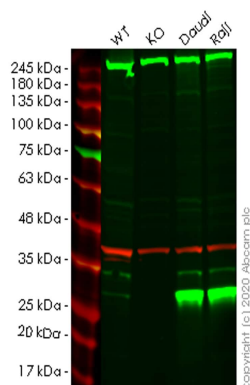
The Abpromise guarantee **Abpromise保証は、次のテスト済みアプリケーションにおけるab183506の使用に適用されず**
アプリケーションノートには、推奨の開始希釈率がありますが、適切な希釈率につきましてはご検討ください。

アプリケーション	Abreviews	特記事項
Flow Cyt (Intra)		1/90. ab172730 - Rabbit monoclonal IgG, is suitable for use as an isotype control with this antibody.
WB		1/1000 - 1/10000. Detects a band of approximately 27 kDa (predicted molecular weight: 29 kDa).
IHC-P		1/100. Perform heat mediated antigen retrieval with Tris/EDTA buffer pH 9.0 before commencing with IHC staining protocol.

ターゲット情報

機能	The proteasome is a multicatalytic proteinase complex which is characterized by its ability to cleave peptides with Arg, Phe, Tyr, Leu, and Glu adjacent to the leaving group at neutral or slightly basic pH. The proteasome has an ATP-dependent proteolytic activity. This subunit is involved in antigen processing to generate class I binding peptides.
配列類似性	Belongs to the peptidase T1B family.
発生段階	Highly expressed in immature dendritic cells (at protein level).
翻訳後修飾	Autocleaved. The resulting N-terminal Thr residue of the mature subunit is responsible for the nucleophile proteolytic activity.
細胞内局在	Cytoplasm. Nucleus.

画像



Western blot - Anti-PSMB10/MECL1 antibody [EPR14902] (ab183506)

All lanes : Anti-PSMB10/MECL1 antibody [EPR14902] (ab183506) at 1/1000 dilution

Lane 1 : Wild-type HeLa cell lysate

Lane 2 : PSMB10 knockout HeLa cell lysate

Lane 3 : Daudi cell lysate

Lane 4 : Raji cell lysate

Lysates/proteins at 20 µg per lane.

Secondary

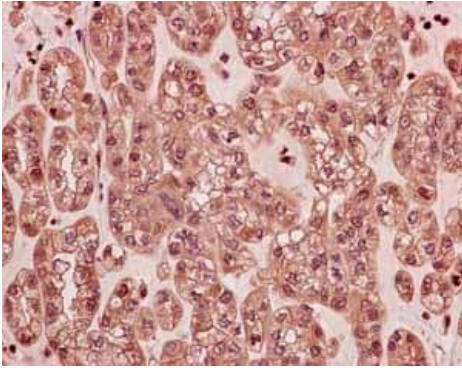
All lanes : Goat anti-Rabbit IgG H&L (IRDye® 800CW) preadsorbed (**ab216773**) at 1/10000 dilution

Predicted band size: 29 kDa

Observed band size: 29 kDa

Lanes 1-4: Merged signal (red and green). Green - ab183506 observed at 29 kDa. Red - loading control **ab8245** observed at 36 kDa.

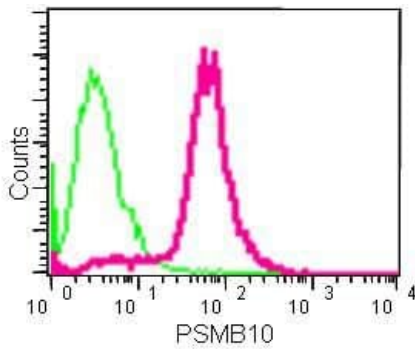
ab183506 Anti-PSMB10/MECL1 antibody [EPR14902] was shown to specifically react with PSMB10/MECL1 in wild-type HeLa cells. Loss of signal was observed when knockout cell line **ab264923** (knockout cell lysate **ab258145**) was used. Wild-type and PSMB10/MECL1 knockout samples were subjected to SDS-PAGE. ab183506 and Anti-GAPDH antibody [6C5] - Loading Control (**ab8245**) were incubated overnight at 4°C at 1 in 1000 dilution and 1 in 20000 dilution respectively. Blots were developed with Goat anti-Rabbit IgG H&L (IRDye® 800CW) preadsorbed (**ab216773**) and Goat anti-Mouse IgG H&L (IRDye® 680RD) preadsorbed (**ab216776**) secondary antibodies at 1 in 20000 dilution for 1 hour at room temperature before imaging.



Immunohistochemistry (Formalin/PFA-fixed paraffin-embedded sections) - Anti-PSMB10/MECL1 antibody [EPR14902] (ab183506)

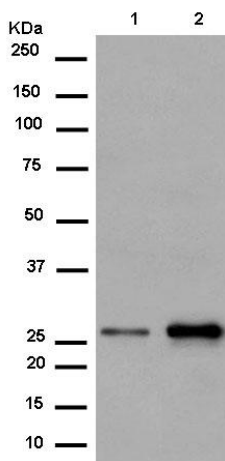
Immunohistochemical analysis of paraffin-embedded Human Kidney adenocarcinoma tissue labeling PSMB10/MECL1 with ab183506 at 1/100 dilution followed by pre-diluted HRP-conjugated secondary antibody and counter-stained with Hematoxylin.

Perform heat mediated antigen retrieval with EDTA buffer pH 9 before commencing with IHC staining protocol.



Flow Cytometry (Intracellular) - Anti-PSMB10/MECL1 antibody [EPR14902] (ab183506)

Intracellular flow cytometric analysis of Daudi cells (2% paraformaldehyde-fixed) labeling PSMB10/MECL1 with ab183506 at 1/90 dilution (red) or a rabbit IgG (negative) (green), followed by Goat anti rabbit IgG (FITC) secondary at 1/150 dilution.



Western blot - Anti-PSMB10/MECL1 antibody [EPR14902] (ab183506)

All lanes : Anti-PSMB10/MECL1 antibody [EPR14902] (ab183506) at 1/1000 dilution

Lane 1 : Human fetal spleen tissue lysate

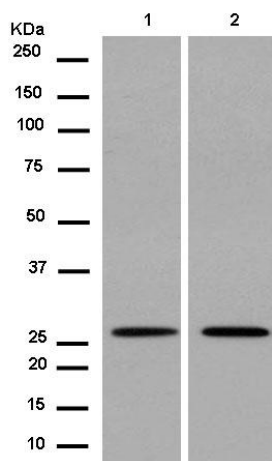
Lane 2 : Human fetal thymus tissue lysate

Lysates/proteins at 10 µg per lane.

Secondary

All lanes : Goat Anti-Rabbit IgG, (H+L), Peroxidase conjugated antibody at 1/1000 dilution

Predicted band size: 29 kDa



Western blot - Anti-PSMB10/MECL1 antibody
[EPR14902] (ab183506)

All lanes : Anti-PSMB10/MECL1 antibody [EPR14902]
(ab183506) at 1/5000 dilution

Lane 1 : HuT 78 cell line lysate

Lane 2 : Raji cell line lysate





Lysates/proteins at 10 µg per lane.

Secondary

All lanes : Goat Anti-Rabbit IgG, (H+L), Peroxidase conjugated
antibody at 1/1000 dilution

Predicted band size: 29 kDa

Why choose a
recombinant antibody?

 <p>Research with confidence Consistent and reproducible results</p>	 <p>Long-term and scalable supply Recombinant technology</p>
 <p>Success from the first experiment Confirmed specificity</p>	 <p>Ethical standards compliant Animal-free production</p>

Anti-PSMB10/MECL1 antibody [EPR14902]
(ab183506)

Please note: All products are "FOR RESEARCH USE ONLY. NOT FOR USE IN DIAGNOSTIC PROCEDURES"

Our Promise to you: Quality guaranteed and expert technical support

- Replacement or refund for products not performing as stated on the datasheet
- Valid for 12 months from date of delivery
- Response to your inquiry within 24 hours
- We provide support in Chinese, English, French, German, Japanese and Spanish
- Extensive multi-media technical resources to help you
- We investigate all quality concerns to ensure our products perform to the highest standards

If the product does not perform as described on this datasheet, we will offer a refund or replacement. For full details of the Abpromise, please visit <https://www.abcam.co.jp/abpromise> or contact our technical team.

Terms and conditions

- Guarantee only valid for products bought direct from Abcam or one of our authorized distributors