


### Anti-PSMA3 antibody ab96746

面格新 2

医薬用外劇物

#### 製品の概要

製品名	Anti-PSMA3 antibody
製品の詳細	Rabbit polyclonal to PSMA3
由来種	Rabbit
アプリケーション	適用あり: WB, IHC-P
種交差性	交差種: Mouse, Human 交差が予測される動物種: Rat, Cow, Zebrafish 
免疫原	Recombinant fragment corresponding to Human PSMA3 aa 1-147. Database link: <a href="#">P25788</a>
ポジティブ・コントロール	MOLT4 whole cell lysate; U87 xenograft; Raji cell lysate
特記事項	<p>The Life Science industry has been in the grips of a reproducibility crisis for a number of years. Abcam is leading the way in addressing this with our range of recombinant monoclonal antibodies and knockout edited cell lines for gold-standard validation. Please check that this product meets your needs before purchasing.</p> <p>If you have any questions, special requirements or concerns, please send us an inquiry and/or contact our Support team ahead of purchase. Recommended alternatives for this product can be found below, along with publications, customer reviews and Q&amp;As</p>

#### 製品の特性

製品の状態	Liquid
保存方法	Shipped at 4°C. Upon delivery aliquot and store at -20°C or -80°C. Avoid repeated freeze / thaw cycles.
バッファー	pH: 7.00 Preservative: 0.01% Thimerosal (merthiolate) Constituents: 1.21% Tris, 0.75% Glycine, 20% Glycerol (glycerin, glycerine)
精製度	Immunogen affinity purified
ポリ/モノ	ポリクローナル
アイソタイプ	IgG

## アプリケーション

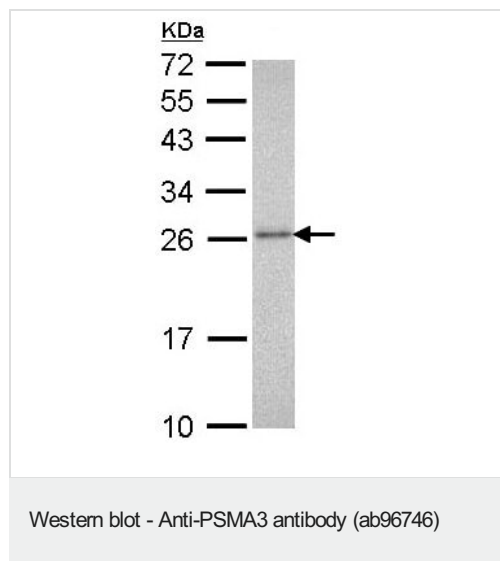
**The Abpromise guarantee** Abpromise保証は、 次のテスト済みアプリケーションにおけるab96746の使用に適用されます  
アプリケーションノートには、推奨の開始希釈率がありますが、適切な希釈率につきましてはご確認ください。

アプリケーション	Abreviews	特記事項
WB		1/500 - 1/3000. Predicted molecular weight: 28 kDa.
IHC-P		1/100 - 1/500.

## ターゲット情報

機能	The proteasome is a multicatalytic proteinase complex which is characterized by its ability to cleave peptides with Arg, Phe, Tyr, Leu, and Glu adjacent to the leaving group at neutral or slightly basic pH. The proteasome has an ATP-dependent proteolytic activity. Binds to the C-terminus of CDKN1A and thereby mediates its degradation. Negatively regulates the membrane trafficking of the cell-surface thromboxane A2 receptor (TBXA2R) isoform 2.
配列類似性	Belongs to the peptidase T1A family.
細胞内局在	Cytoplasm. Nucleus.

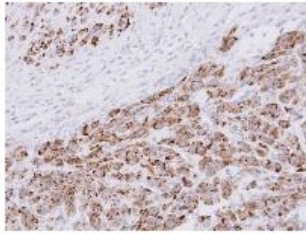
## 画像



Anti-PSMA3 antibody (ab96746) at 1/1000 dilution + MOLT4 whole cell lysate at 30 µg

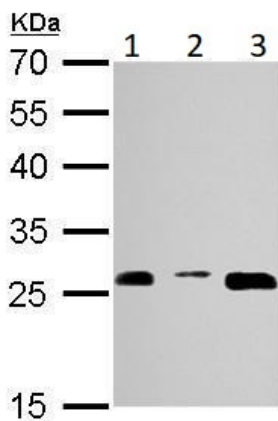
**Predicted band size:** 28 kDa

12% SDS PAGE



Immunohistochemistry (Formalin/PFA-fixed paraffin-embedded sections) - Anti-PSMA3 antibody (ab96746)

ab96746, at 1/100 dilution, staining PSMA3 in paraffin-embedded U87 xenograft by Immunohistochemistry.



Western blot - Anti-PSMA3 antibody (ab96746)

**All lanes :** Anti-PSMA3 antibody (ab96746) at 1/1000 dilution

**Lane 1 :** NIH/3T3 (mouse embryo fibroblast cell line) whole cell lysate/extract

**Lane 2 :** JC whole cell lysate/extract

**Lane 3 :** BCL-1 whole cell lysate/extract

Lysates/proteins at 30 µg per lane.

**Predicted band size:** 28 kDa

**Please note:** All products are "FOR RESEARCH USE ONLY. NOT FOR USE IN DIAGNOSTIC PROCEDURES"

### Our Abpromise to you: Quality guaranteed and expert technical support

- Replacement or refund for products not performing as stated on the datasheet
- Valid for 12 months from date of delivery
- Response to your inquiry within 24 hours
- We provide support in Chinese, English, French, German, Japanese and Spanish
- Extensive multi-media technical resources to help you
- We investigate all quality concerns to ensure our products perform to the highest standards

If the product does not perform as described on this datasheet, we will offer a refund or replacement. For full details of the Abpromise, please visit <https://www.abcam.co.jp/abpromise> or contact our technical team.

### Terms and conditions

- Guarantee only valid for products bought direct from Abcam or one of our authorized distributors