

Anti-PSMA antibody [GCP-05] ab66912

★☆☆☆☆ **1 Abreviews** **8 References** [画像数 2](#)

製品の概要

製品名	Anti-PSMA antibody [GCP-05]
製品の詳細	Mouse monoclonal [GCP-05] to PSMA
由来種	Mouse
アプリケーション	適用あり: Flow Cyt
種交差性	交差種: Human
免疫原	Recombinant fragment, corresponding to amino acids 44-750 of Human PSMA
エピトープ	This antibody recognizes the extracellular domain of PSMA.
ポジティブ・コントロール	LNCaP cells.
特記事項	<p>This product was changed from ascites to tissue culture supernatant on 24th January 2018. Please note that the dilutions may need to be adjusted accordingly. If you have any questions, please do not hesitate to contact our scientific support team.</p> <p>The Life Science industry has been in the grips of a reproducibility crisis for a number of years. Abcam is leading the way in addressing this with our range of recombinant monoclonal antibodies and knockout edited cell lines for gold-standard validation. Please check that this product meets your needs before purchasing.</p> <p>If you have any questions, special requirements or concerns, please send us an inquiry and/or contact our Support team ahead of purchase. Recommended alternatives for this product can be found below, along with publications, customer reviews and Q&As</p>

製品の特性

製品の状態	Liquid
保存方法	Shipped at 4°C. Upon delivery aliquot and store at -20°C. Avoid freeze / thaw cycles.
バッファー	<p>pH: 7.4</p> <p>Preservative: 0.097% Sodium azide</p> <p>Constituent: PBS</p>
精製度	Protein A purified
特記事項(精製)	Purity: > 95% Purified from TCS
ポリ/モノ	モノクローナル
クローン名	GCP-05

アプリケーション

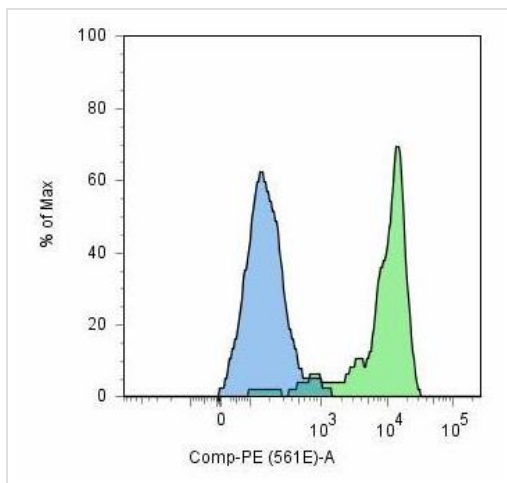
The Abpromise guarantee Abpromise保証は、次のテスト済みアプリケーションにおけるab66912の使用に適用されます
 アプリケーションノートには、推奨の開始希釈率がありますが、適切な希釈率につきましてはご確認ください。

アプリケーション	Abreviews	特記事項
Flow Cyt		Use a concentration of 1 - 4 µg/ml. ab170190 - Mouse monoclonal IgG1, is suitable for use as an isotype control with this antibody.

ターゲット情報

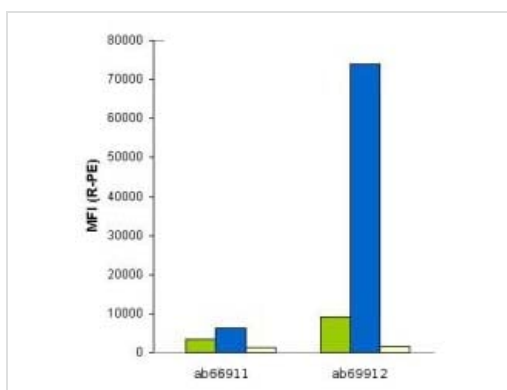
機能	Has both folate hydrolase and N-acetylated-alpha-linked-acidic dipeptidase (NAALADase) activity. Has a preference for tri-alpha-glutamate peptides. In the intestine, required for the uptake of folate. In the brain, modulates excitatory neurotransmission through the hydrolysis of the neuropeptide, N-aceylaspartylglutamate (NAAG), thereby releasing glutamate. Isoform PSM-4 and isoform PSM-5 would appear to be physiologically irrelevant. Involved in prostate tumor progression. Also exhibits a dipeptidyl-peptidase IV type activity. In vitro, cleaves Gly-Pro-AMC.
組織特異性	Highly expressed in prostate epithelium. Detected in urinary bladder, kidney, testis, ovary, fallopian tube, breast, adrenal gland, liver, esophagus, stomach, small intestine, colon and brain (at protein level). Detected in the small intestine, brain, kidney, liver, spleen, colon, trachea, spinal cord and the capillary endothelium of a variety of tumors. Expressed specifically in jejunum brush border membranes. In the brain, highly expressed in the ventral striatum and brain stem. Also expressed in fetal liver and kidney. Isoform PSMA' is the most abundant form in normal prostate. Isoform PSMA-1 is the most abundant form in primary prostate tumors. Isoform PSMA-2 is also found in normal prostate as well as in brain and liver. Isoform PSMA-9 is specifically expressed in prostate cancer.
配列類似性	Belongs to the peptidase M28 family. M28B subfamily.
ドメイン	The NAALADase activity is found in the central region, the dipeptidyl peptidase IV type activity in the C-terminal.
翻訳後修飾	The first two amino acids at the N-terminus of isoform PSMA' appear to be cleaved by limited proteolysis. The N-terminus is blocked.
細胞内局在	Cytoplasm and Cell membrane.

画像



Flow cytometry analysis of PSMA positive LNCaP cells stained with ab66912 (green) and PSMA negative HeLa cells (blue)

Flow Cytometry - Anti-PSMA antibody [GCP-05]
(ab66912)



This image shows LNCaP cell line stained by **ab66911** and ab66912. Green column - antibodies at 1µg/ml; Blue column - antibodies at 5µg/ml; Yellow column - negative cell line.

Flow Cytometry - Anti-PSMA antibody [GCP-05]
(ab66912)

Please note: All products are "FOR RESEARCH USE ONLY. NOT FOR USE IN DIAGNOSTIC PROCEDURES"

Our Abpromise to you: Quality guaranteed and expert technical support

- Replacement or refund for products not performing as stated on the datasheet
- Valid for 12 months from date of delivery
- Response to your inquiry within 24 hours
- We provide support in Chinese, English, French, German, Japanese and Spanish
- Extensive multi-media technical resources to help you
- We investigate all quality concerns to ensure our products perform to the highest standards

If the product does not perform as described on this datasheet, we will offer a refund or replacement. For full details of the Abpromise,

please visit <https://www.abcam.co.jp/abpromise> or contact our technical team.

Terms and conditions

- Guarantee only valid for products bought direct from Abcam or one of our authorized distributors