

# Anti-PSMA antibody ab58779

[2 References](#) [画像数 1](#)

### 製品の概要

---

|              |  |
|--------------|--|
| 製品名          | Anti-PSMA antibody   |
| 製品の詳細        | Rabbit polyclonal to PSMA  |
| 由来種          | Rabbit   |
| アプリケーション     | <b>適用あり:</b> IHC-P   |
| 種交差性         | <b>交差種:</b> Human  |
| 免疫原          | Synthetic peptide within Human PSMA aa 700 to the C-terminus (C terminal). The exact sequence is proprietary.<br>Database link: <a href="#">Q04609</a>   |
| ポジティブ・コントロール | Prostate carcinoma tissue.   |
| 特記事項         | <b>This product is FOR RESEARCH USE ONLY. For commercial use, please contact <a href="mailto:partnerships@abcam.com">partnerships@abcam.com</a>.</b><br><br>The Life Science industry has been in the grips of a reproducibility crisis for a number of years. Abcam is leading the way in addressing this with our range of recombinant monoclonal antibodies and knockout edited cell lines for gold-standard validation. Please check that this product meets your needs before purchasing.<br><br>If you have any questions, special requirements or concerns, please send us an inquiry and/or contact our Support team ahead of purchase. Recommended alternatives for this product can be found below, along with publications, customer reviews and Q&As |

### 製品の特性

---

|        |   |
|--------|---|
| 製品の状態  | Liquid  |
| 保存方法   | Shipped at 4°C. Upon delivery aliquot and store at -20°C. Avoid freeze / thaw cycles. |
| バッファー  | pH: 7.60<br>Preservative: 0.1% Sodium azide<br>Constituents: PBS, 1% BSA              |
| 精製度    | Immunogen affinity purified   |
| ポリモノ   | ポリクローナル   |
| アイソタイプ | IgG   |

## アプリケーション

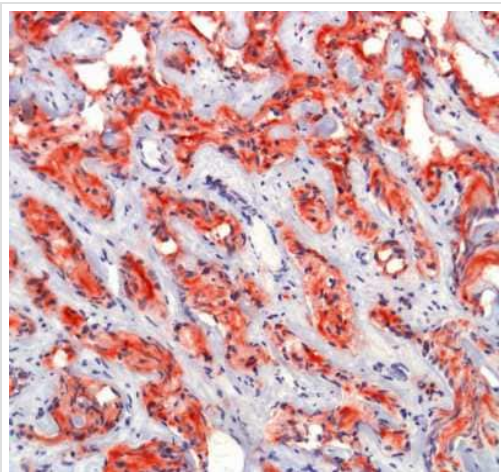
The Abpromise guarantee **Abpromise保証は、次のテスト済みアプリケーションにおけるab58779の使用に適用されず**  
アプリケーションノートには、推奨の開始希釈率がありますが、適切な希釈率につきましてはご検討ください。

| アプリケーション | Abreviews | 特記事項   |
|----------|-----------|--|
| IHC-P    |           | 1/100. Perform heat mediated antigen retrieval before commencing with IHC staining protocol. |

## ターゲット情報

|       |   |
|-------|---|
| 機能    | <p>Has both folate hydrolase and N-acetylated-alpha-linked-acidic dipeptidase (NAALADase) activity. Has a preference for tri-alpha-glutamate peptides. In the intestine, required for the uptake of folate. In the brain, modulates excitatory neurotransmission through the hydrolysis of the neuropeptide, N-aceylaspartylglutamate (NAAG), thereby releasing glutamate. Isoform PSM-4 and isoform PSM-5 would appear to be physiologically irrelevant. Involved in prostate tumor progression.</p> <p>Also exhibits a dipeptidyl-peptidase IV type activity. In vitro, cleaves Gly-Pro-AMC.</p>  |
| 組織特異性 | <p>Highly expressed in prostate epithelium. Detected in urinary bladder, kidney, testis, ovary, fallopian tube, breast, adrenal gland, liver, esophagus, stomach, small intestine, colon and brain (at protein level). Detected in the small intestine, brain, kidney, liver, spleen, colon, trachea, spinal cord and the capillary endothelium of a variety of tumors. Expressed specifically in jejunum brush border membranes. In the brain, highly expressed in the ventral striatum and brain stem. Also expressed in fetal liver and kidney. Isoform PSMA' is the most abundant form in normal prostate. Isoform PSMA-1 is the most abundant form in primary prostate tumors. Isoform PSMA-2 is also found in normal prostate as well as in brain and liver. Isoform PSMA-9 is specifically expressed in prostate cancer.</p> |
| 配列類似性 | <p>Belongs to the peptidase M28 family. M28B subfamily.</p>   |
| ドメイン  | <p>The NAALADase activity is found in the central region, the dipeptidyl peptidase IV type activity in the C-terminal.</p>  |
| 翻訳後修飾 | <p>The first two amino acids at the N-terminus of isoform PSMA' appear to be cleaved by limited proteolysis.</p> <p>The N-terminus is blocked.</p>  |
| 細胞内局在 | <p>Cytoplasm and Cell membrane.</p>   |

## 画像



Human prostate carcinoma stained with ab58779 at a dilution of 1/100

Immunohistochemistry (Formalin/PFA-fixed paraffin-embedded sections) - Anti-PSMA antibody (ab58779)

**Please note:** All products are "FOR RESEARCH USE ONLY. NOT FOR USE IN DIAGNOSTIC PROCEDURES"

### Our Abpromise to you: Quality guaranteed and expert technical support

---

- Replacement or refund for products not performing as stated on the datasheet
- Valid for 12 months from date of delivery
- Response to your inquiry within 24 hours
- We provide support in Chinese, English, French, German, Japanese and Spanish
- Extensive multi-media technical resources to help you
- We investigate all quality concerns to ensure our products perform to the highest standards

If the product does not perform as described on this datasheet, we will offer a refund or replacement. For full details of the Abpromise, please visit <https://www.abcam.co.jp/abpromise> or contact our technical team.

### Terms and conditions

---

- Guarantee only valid for products bought direct from Abcam or one of our authorized distributors