

Anti-PSCA antibody ab15168

[1 Abreviews](#) [1 References](#) [画像数 1](#)

製品の概要

製品名	Anti-PSCA antibody
製品の詳細	Rabbit polyclonal to PSCA
由来種	Rabbit
アプリケーション	適用あり: IHC-P
種交差性	交差種: Human
免疫原	Synthetic peptide within Human PSCA (extracellular). The exact sequence is proprietary. Database link: O43653
ポジティブ・コントロール	Bladder carcinoma and Prostate carcinoma.
特記事項	<p>This product is FOR RESEARCH USE ONLY. For commercial use, please contact partnerships@abcam.com.</p> <p>The Life Science industry has been in the grips of a reproducibility crisis for a number of years. Abcam is leading the way in addressing this with our range of recombinant monoclonal antibodies and knockout edited cell lines for gold-standard validation. Please check that this product meets your needs before purchasing.</p> <p>If you have any questions, special requirements or concerns, please send us an inquiry and/or contact our Support team ahead of purchase. Recommended alternatives for this product can be found below, along with publications, customer reviews and Q&As</p>

製品の特性

製品の状態	Liquid
保存方法	Shipped at 4°C. Store at +4°C short term (1-2 weeks). Upon delivery aliquot. Store at -20°C or -80°C. Avoid freeze / thaw cycle.
バッファー	pH: 7.60 Preservative: 0.1% Sodium azide Constituents: PBS, 1% BSA
精製度	Immunogen affinity purified
ポリ/モノ	ポリクローナル
アイソタイプ	IgG

アプリケーション

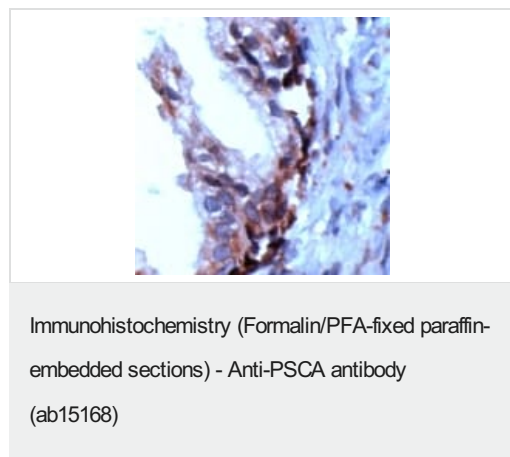
The Abpromise guarantee Abpromise保証は、 次のテスト済みアプリケーションにおけるab15168の使用に適用されます
アプリケーションノートには、推奨の開始希釈率がありますが、適切な希釈率につきましてはご検討ください。

アプリケーション	Abreviews	特記事項
IHC-P		1/75. Perform heat mediated antigen retrieval before commencing with IHC staining protocol.

ターゲット情報

関連性	PSCA (Prostate Stem Cell antigen) is a cell surface antigen, which is overexpressed in ~40% of primary prostate cancers and in as many as 100% of metastatic ones. PSCA is also overexpressed in a majority of transitional cell and pancreatic carcinomas. Antibody directed against PSCA inhibits tumorigenesis, slows tumor growth, prolongs survival and prevents metastasis in a preclinical xenograft model indicating that PSCA may have utility as a prognostic marker and/or therapeutic target in prostate cancer.
細胞内局在	Cell membrane; Lipid-anchor, GPI-anchor.

画像



ab15168 staining PSCA in human breast carcinoma by Immunohistochemistry (Formalin/ PFA fixed paraffin embedded tissue sections).

Please note: All products are "FOR RESEARCH USE ONLY. NOT FOR USE IN DIAGNOSTIC PROCEDURES"

Our Abpromise to you: Quality guaranteed and expert technical support

- Replacement or refund for products not performing as stated on the datasheet
- Valid for 12 months from date of delivery
- Response to your inquiry within 24 hours
- We provide support in Chinese, English, French, German, Japanese and Spanish
- Extensive multi-media technical resources to help you
- We investigate all quality concerns to ensure our products perform to the highest standards

If the product does not perform as described on this datasheet, we will offer a refund or replacement. For full details of the Abpromise, please visit <https://www.abcam.co.jp/abpromise> or contact our technical team.

Terms and conditions

- Guarantee only valid for products bought direct from Abcam or one of our authorized distributors