

Anti-PRUNE antibody ab88613

★★★★★ [2 Abreviews](#) [2 References](#) [画像数 4](#)

製品の概要

製品名	Anti-PRUNE antibody
製品の詳細	Mouse polyclonal to PRUNE
由来種	Mouse
アプリケーション	適用あり: WB, ICC/IF
種交差性	交差種: Mouse, Human
免疫原	Recombinant full length protein within Human PRUNE. The exact immunogen sequence used to generate this antibody is proprietary information. If additional detail on the immunogen is needed to determine the suitability of the antibody for your needs, please contact our Scientific Support team to discuss your requirements.
ポジティブ・コントロール	WB: Raw 264.7 cell lysate, NIH/3T3 cell lysate, and PRUNE transfected 293T cell lysate ICC/IF: HeLa cell
特記事項	<p>The Life Science industry has been in the grips of a reproducibility crisis for a number of years. Abcam is leading the way in addressing this with our range of recombinant monoclonal antibodies and knockout edited cell lines for gold-standard validation. Please check that this product meets your needs before purchasing.</p> <p>If you have any questions, special requirements or concerns, please send us an inquiry and/or contact our Support team ahead of purchase. Recommended alternatives for this product can be found below, along with publications, customer reviews and Q&As</p>

製品の特性

製品の状態	Liquid
保存方法	Shipped at 4°C. Upon delivery aliquot and store at -20°C or -80°C. Avoid repeated freeze / thaw cycles.
バッファー	pH: 7.40 Constituent: 100% PBS
精製度	Protein A purified
ポリ/モノ	ポリクローナル
アイソタイプ	IgG

アプリケーション

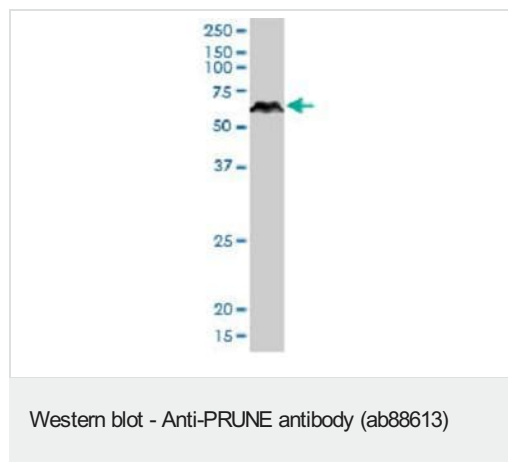
The Abpromise guarantee **Abpromise保証は、** 次のテスト済みアプリケーションにおけるab88613の使用に適用されます
アプリケーションノートには、推奨の開始希釈率がありますが、適切な希釈率につきましてはご検討ください。

アプリケーション	Abreviews	特記事項
WB		Use a concentration of 1 µg/ml. Predicted molecular weight: 50 kDa.
ICC/IF	★★★★★ (1)	Use a concentration of 10 µg/ml.

ターゲット情報

機能	Phosphodiesterase (PDE) that has higher activity toward cAMP than cGMP, as substrate. Plays a role in cell proliferation, is able to induce cell motility and acts as a negative regulator of NME1.
組織特異性	Ubiquitously expressed. Seems to be overexpressed in aggressive sarcoma subtypes, such as leiomyosarcomas and malignant fibrous histiocytomas (MFH) as well as in the less malignant liposarcomas.
配列類似性	Belongs to the PPase class C family. Prune subfamily.
細胞内局在	Cytoplasm. Nucleus. Cell junction > focal adhesion. In some transfected cells a nuclear staining is also observed.

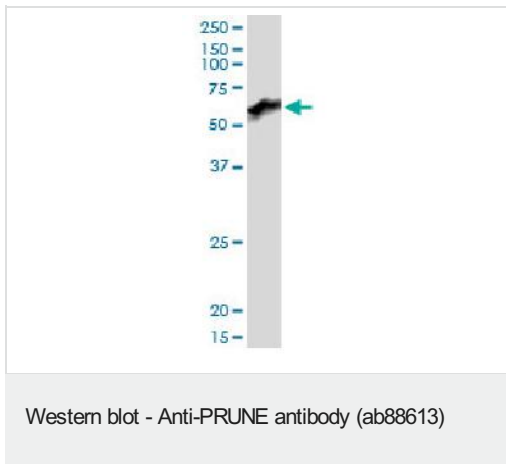
画像



Anti-PRUNE antibody (ab88613) at 1 µg/ml + Raw 264.7 cell lysate
at 50 µg

Predicted band size: 50 kDa

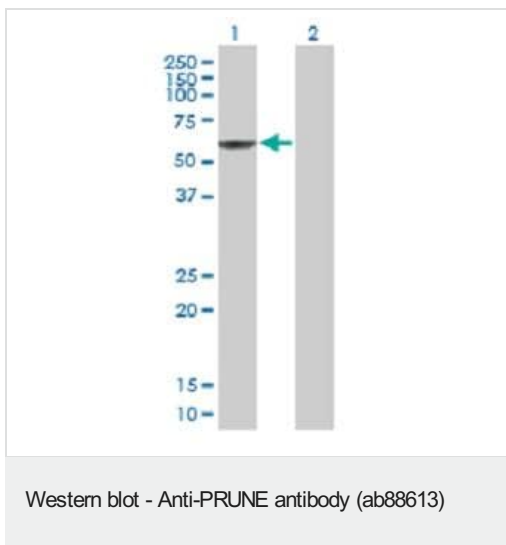
Observed band size: 60 kDa



Anti-PRUNE antibody (ab88613) at 1 µg/ml + NIH/3T3 cell lysate at 50 µg

Predicted band size: 50 kDa

Observed band size: 60 kDa



All lanes : Anti-PRUNE antibody (ab88613) at 1 µg/ml

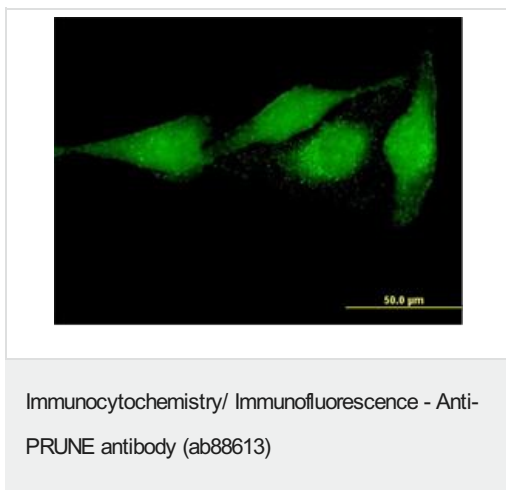
Lane 1 : PRUNE transfected 293T cell lysate

Lane 2 : Non transfected 293T cell lysate

Lysates/proteins at 25 µg per lane.

Predicted band size: 50 kDa

Observed band size: 60 kDa



ab88613, at 10 µg/ml, staining PRUNE in HeLa cell by Immunofluorescence.

Please note: All products are "FOR RESEARCH USE ONLY. NOT FOR USE IN DIAGNOSTIC PROCEDURES"

Our Abpromise to you: Quality guaranteed and expert technical support

- Replacement or refund for products not performing as stated on the datasheet
- Valid for 12 months from date of delivery
- Response to your inquiry within 24 hours

- We provide support in Chinese, English, French, German, Japanese and Spanish
- Extensive multi-media technical resources to help you
- We investigate all quality concerns to ensure our products perform to the highest standards

If the product does not perform as described on this datasheet, we will offer a refund or replacement. For full details of the Abpromise, please visit <https://www.abcam.co.jp/abpromise> or contact our technical team.

Terms and conditions

- Guarantee only valid for products bought direct from Abcam or one of our authorized distributors