


### Anti-Protein Z antibody ab85317

画像数 2

#### 製品の概要

製品名	Anti-Protein Z antibody
製品の詳細	Rabbit polyclonal to Protein Z
由来種	Rabbit
アプリケーション	<b>適用あり:</b> ICC/IF, WB
種交差性	<b>交差種:</b> Human <b>交差が予測される動物種:</b> Chimpanzee, Macaque monkey, Gorilla, Orangutan 
免疫原	Synthetic peptide corresponding to Human Protein Z aa 150-250 conjugated to keyhole limpet haemocyanin. (Peptide available as <a href="#">ab129946</a> )
ポジティブ・コントロール	This antibody gave a positive signal in HepG2 whole cell lysate as well as the following tissue lysates: Human Heart; Human Spleen; Human Bone Tumour; Human Bone Marrow. This antibody gave a positive result in IF in the following formaldehyde fixed cell lines: DU145.
特記事項	<p>The Life Science industry has been in the grips of a reproducibility crisis for a number of years. Abcam is leading the way in addressing this with our range of recombinant monoclonal antibodies and knockout edited cell lines for gold-standard validation. Please check that this product meets your needs before purchasing.</p> <p>If you have any questions, special requirements or concerns, please send us an inquiry and/or contact our Support team ahead of purchase. Recommended alternatives for this product can be found below, along with publications, customer reviews and Q&amp;As</p>

#### 製品の特性

製品の状態	Liquid
保存方法	Shipped at 4°C. Store at +4°C short term (1-2 weeks). Upon delivery aliquot. Store at -20°C or -80°C. Avoid freeze / thaw cycle.
バッファー	pH: 7.40 Preservative: 0.02% Sodium azide Constituent: PBS
	Batches of this product that have a concentration < 1mg/ml may have BSA added as a stabilising agent. If you would like information about the formulation of a specific lot, please contact our scientific support team who will be happy to help.

精製度	Immunogen affinity purified
ポリ/モノ	ポリクローナル
アイソタイプ	IgG

## アプリケーション

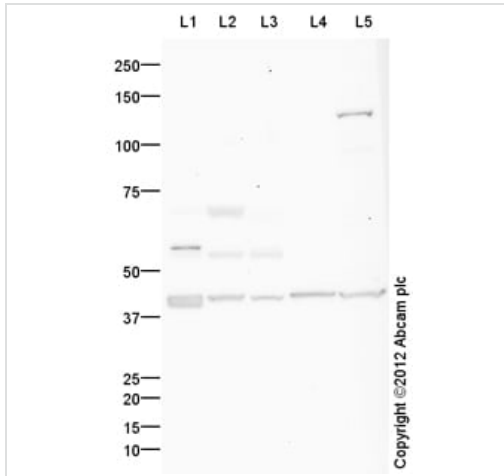
**The Abpromise guarantee**      **Abpromise保証は、**次のテスト済みアプリケーションにおけるab85317の使用に適用されます  
アプリケーションノートには、推奨の開始希釈率がありますが、適切な希釈率につきましてはご検討ください。

アプリケーション	Abreviews	特記事項
ICC/IF		Use a concentration of 5 µg/ml.
WB		Use a concentration of 1 µg/ml. Detects a band of approximately 42 kDa (predicted molecular weight: 44 kDa).

## ターゲット情報

機能	Appears to assist hemostasis by binding thrombin and promoting its association with phospholipid vesicles.
組織特異性	Plasma.
配列類似性	Belongs to the peptidase S1 family. Contains 2 EGF-like domains. Contains 1 Gla (gamma-carboxy-glutamate) domain. Contains 1 peptidase S1 domain.
翻訳後修飾	The iron and 2-oxoglutarate dependent 3-hydroxylation of aspartate and asparagine is (R) stereospecific within EGF domains.
細胞内局在	Secreted.

## 画像



Western blot - Anti-Protein Z antibody (ab85317)

**All lanes :** Anti-Protein Z antibody (ab85317) at 1 µg/ml (Milk Blocking - 5%)

**Lane 1 :** Human heart tissue lysate - total protein ([ab29431](#))

**Lane 2 :** Human spleen tissue lysate - total protein ([ab29699](#))

**Lane 3 :** Human bone tumor tissue lysate - total protein ([ab29359](#))

**Lane 4 :** Bone Marrow (Human) Tissue Lysate - adult normal tissue

**Lane 5 :** HepG2 (Human hepatocellular liver carcinoma cell line)

Whole Cell Lysate

Lysates/proteins at 20 µg per lane.

### Secondary

**All lanes :** Goat Anti-Rabbit IgG H&L (HRP) preadsorbed ([ab97080](#)) at 1/5000 dilution

Developed using the ECL technique.

Performed under reducing conditions.

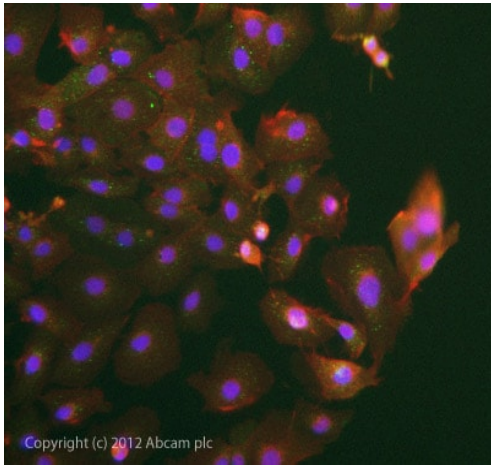
**Predicted band size:** 44 kDa

**Observed band size:** 42 kDa

**Additional bands at:** 140 kDa, 55 kDa, 70 kDa. We are unsure as to the identity of these extra bands.

**Exposure time:** 20 minutes

The band observed at 42 kDa could potentially be a cleaved form of Protein Z due to the presence of a 23 amino acid signal peptide.



Immunocytochemistry/ Immunofluorescence - Anti-Protein Z antibody (ab85317)

ICC/IF image of ab85317 stained DU145 cells. The cells were 4% formaldehyde fixed (10 min) and then incubated in 1%BSA / 10% normal goat serum / 0.3M glycine in 0.1% PBS-Tween for 1h to permeabilise the cells and block non-specific protein-protein interactions. The cells were then incubated with the antibody ab85317 at 5µg/ml overnight at +4°C. The secondary antibody (green) was DyLight® 488 goat anti- rabbit (**ab96899**) IgG (H+L) used at a 1/1000 dilution for 1h. Alexa Fluor® 594 WGA was used to label plasma membranes (red) at a 1/200 dilution for 1h. DAPI was used to stain the cell nuclei (blue) at a concentration of 1.43µM.

**Please note:** All products are "FOR RESEARCH USE ONLY. NOT FOR USE IN DIAGNOSTIC PROCEDURES"

### Our Abpromise to you: Quality guaranteed and expert technical support

---

- Replacement or refund for products not performing as stated on the datasheet
- Valid for 12 months from date of delivery
- Response to your inquiry within 24 hours
- We provide support in Chinese, English, French, German, Japanese and Spanish
- Extensive multi-media technical resources to help you
- We investigate all quality concerns to ensure our products perform to the highest standards

If the product does not perform as described on this datasheet, we will offer a refund or replacement. For full details of the Abpromise, please visit <https://www.abcam.co.jp/abpromise> or contact our technical team.

### Terms and conditions

---

- Guarantee only valid for products bought direct from Abcam or one of our authorized distributors