


# Anti-Protein phosphatase 1 inhibitor subunit 2 antibody ab73948

画像数 2

### 製品の概要

---

製品名	Anti-Protein phosphatase 1 inhibitor subunit 2 antibody
製品の詳細	Rabbit polyclonal to Protein phosphatase 1 inhibitor subunit 2
由来種	Rabbit
アプリケーション	<b>適用あり:</b> WB, IHC-P
種交差性	<b>交差種:</b> Human <b>交差が予測される動物種:</b> Mouse, Rat 
免疫原	Synthetic non-phosphopeptide derived from human Protein phosphatase 1 inhibitor subunit 2 around the phosphorylation site of serine 120 and serine 121 (Q-E-S <sup>P</sup> -S <sup>P</sup> -G-E).
ポジティブ・コントロール	Human breast carcinoma tissue. Extracts from Jurkat cells.
特記事項	<p>The Life Science industry has been in the grips of a reproducibility crisis for a number of years. Abcam is leading the way in addressing this with our range of recombinant monoclonal antibodies and knockout edited cell lines for gold-standard validation. Please check that this product meets your needs before purchasing.</p> <p>If you have any questions, special requirements or concerns, please send us an inquiry and/or contact our Support team ahead of purchase. Recommended alternatives for this product can be found below, along with publications, customer reviews and Q&amp;As</p>

### 製品の特性

---

製品の状態	Liquid
保存方法	Shipped at 4°C. Store at -20°C. Stable for 12 months at -20°C.
バッファー	pH: 7.40 Preservative: 0.02% Sodium azide Constituents: 50% Glycerol (glycerin, glycerine), 0.87% Sodium chloride, PBS
精製度	Without Mg <sup>2+</sup> and Ca <sup>2+</sup> Immunogen affinity purified
ポリ/モノ	ポリクローナル
アイソタイプ	IgG

## アプリケーション

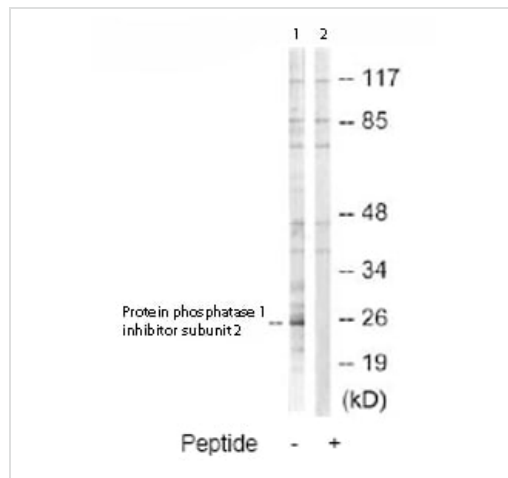
**The Abpromise guarantee** Abpromise保証は、次のテスト済みアプリケーションにおけるab73948の使用に適用されます  
アプリケーションノートには、推奨の開始希釈率がありますが、適切な希釈率につきましてはご検討ください。

アプリケーション	Abreviews	特記事項
WB		1/500 - 1/1000. Detects a band of approximately 25 kDa (predicted molecular weight: 23 kDa).
IHC-P		1/50 - 1/100.

## ターゲット情報

機能	Inhibitor of protein-phosphatase 1.
配列類似性	Belongs to the protein phosphatase inhibitor 2 family.
翻訳後修飾	Phosphorylation on Thr-73 by GSK3 activates PP1 by dissociating the PP1-PPP1R2 complex (By similarity). Phosphorylation on Ser-44 by ATM activates PP1 by dissociating the PP1-PPP1R2 complex.

## 画像



Western blot - Anti-Protein phosphatase 1 inhibitor subunit 2 antibody (ab73948)

**All lanes** : Anti-Protein phosphatase 1 inhibitor subunit 2 antibody (ab73948) at 1/500 dilution

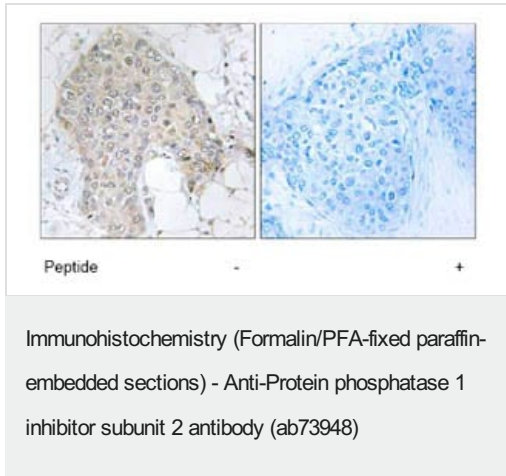
**Lane 1** : Extracts from Jurkat cells

**Lane 2** : Extracts from Jurkat cells with immunising peptide at 5 µg

Lysates/proteins at 5 µg per lane.

**Predicted band size:** 23 kDa

**Observed band size:** 25 kDa



Immunohistochemistry analysis of paraffin-embedded human breast carcinoma tissue using ab73948, at 1/50 dilution, in the presence (right panel) or absence (left panel) of immunising peptide.

**Please note:** All products are "FOR RESEARCH USE ONLY. NOT FOR USE IN DIAGNOSTIC PROCEDURES"

### Our Abpromise to you: Quality guaranteed and expert technical support

---

- Replacement or refund for products not performing as stated on the datasheet
- Valid for 12 months from date of delivery
- Response to your inquiry within 24 hours
- We provide support in Chinese, English, French, German, Japanese and Spanish
- Extensive multi-media technical resources to help you
- We investigate all quality concerns to ensure our products perform to the highest standards

If the product does not perform as described on this datasheet, we will offer a refund or replacement. For full details of the Abpromise, please visit <https://www.abcam.co.jp/abpromise> or contact our technical team.

### Terms and conditions

---

- Guarantee only valid for products bought direct from Abcam or one of our authorized distributors