

Anti-Protein CASP antibody [2A10] - BSA and Azide free ab54583

★★★★★ [9 Abreviews](#) [22 References](#) [画像数 7](#)

製品の概要

製品名	Anti-Protein CASP antibody [2A10] - BSA and Azide free
製品の詳細	Mouse monoclonal [2A10] to Protein CASP - BSA and Azide free
由来種	Mouse
アプリケーション	適用あり: IHC-P, WB, ICC/IF, Sandwich ELISA, Flow Cyt
種交差性	交差種: Human, Recombinant fragment
免疫原	Recombinant fragment (GST-tag) corresponding to Human Protein CASP aa 500-650. NP_001904.2 Database link: Q13948 Run BLAST with Run BLAST with
ポジティブ・コントロール	ICC/IF: HeLa cells. IHC-P: Human spleen tissue; human malignant lymphoma, diffuse large B tissue. Flow Cytometry: MCF7 cells. WB: Protein CASP transfected HEK-293T cell lysate. Recombinant Protein CASP protein.
特記事項	<p>This product was changed from ascites to tissue culture supernatant on 13th Feb 2019. Please note that the dilutions may need to be adjusted accordingly. If you have any questions, please do not hesitate to contact our scientific support team.</p> <p>The Life Science industry has been in the grips of a reproducibility crisis for a number of years. Abcam is leading the way in addressing this with our range of recombinant monoclonal antibodies and knockout edited cell lines for gold-standard validation. Please check that this product meets your needs before purchasing.</p> <p>If you have any questions, special requirements or concerns, please send us an inquiry and/or contact our Support team ahead of purchase. Recommended alternatives for this product can be found below, along with publications, customer reviews and Q&As</p>

製品の特性

製品の状態	Liquid
保存方法	Shipped at 4°C. Upon delivery aliquot and store at -20°C or -80°C. Avoid repeated freeze / thaw cycles.
バッファー	pH: 7.40 Constituent: PBS

キャリア・フリー	はい
精製度	Tissue culture supernatant
ポリ/モノ	モノクローナル
クローン名	2A10
アイソタイプ	IgG1
軽鎖の種類	kappa

アプリケーション

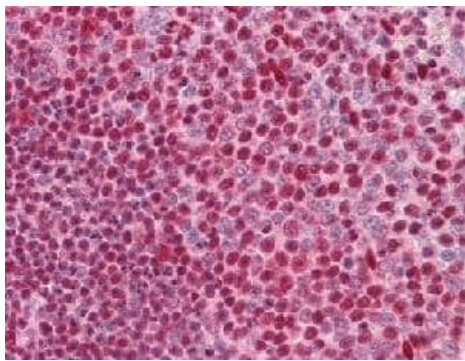
The Abpromise guarantee **Abpromise保証は、次のテスト済みアプリケーションにおけるab54583の使用に適用されます**
 アプリケーションノートには、推奨の開始希釈率がありますが、適切な希釈率につきましてはご検討ください。

アプリケーション	Abreviews	特記事項
IHC-P	★★★★★ (1)	Use at an assay dependent concentration.
WB	★★★★★ (1)	Use at an assay dependent concentration. Predicted molecular weight: 77.5 kDa.
ICC/IF	★★★★★ (3)	Use at an assay dependent concentration.
Sandwich ELISA		Use at an assay dependent concentration.
Flow Cyt		Use at an assay dependent concentration. ab170190 - Mouse monoclonal IgG1, is suitable for use as an isotype control with this antibody.

ターゲット情報

機能	May be involved in intra-Golgi retrograde transport.
配列類似性	Belongs to the CASP family.
細胞内局在	Golgi apparatus membrane.

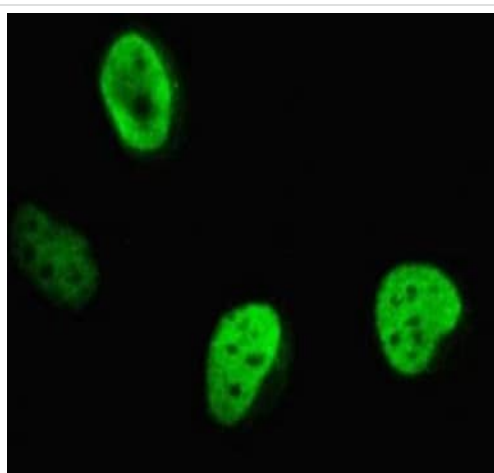
画像



Immunohistochemistry (Formalin/PFA-fixed paraffin-embedded sections) - Anti-Protein CASP antibody [2A10] - BSA and Azide free (ab54583)

Formalin-fixed, paraffin-embedded human spleen tissue stained for Protein CASP with ab54583 at 5 µg/ml in immunohistochemical analysis.

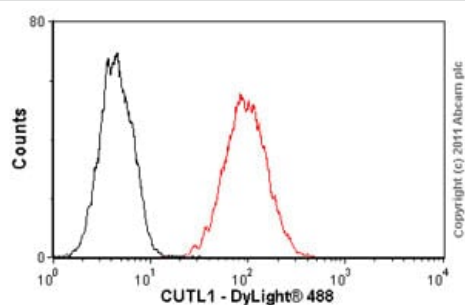
This image was generated using the ascites version of the product.



Immunocytochemistry/ Immunofluorescence - Anti-Protein CASP antibody [2A10] - BSA and Azide free (ab54583)

HeLa (human epithelial cell line from cervix adenocarcinoma) cells stained for Protein CASP (green) using ab54583 at 10 µg/ml in ICC/IF.

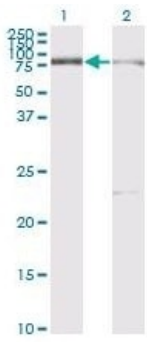
This image was generated using the ascites version of the product.



Flow Cytometry - Anti-Protein CASP antibody [2A10] - BSA and Azide free (ab54583)

Overlay histogram showing MCF7 (human breast adenocarcinoma cell line) cells stained with ab54583 (red line). The cells were fixed with 80% methanol (5 minutes) and then permeabilized with 0.1% PBS-Tween for 20 minutes. The cells were then incubated in 1x PBS / 10% normal goat serum / 0.3 M glycine to block non-specific protein-protein interactions followed by the antibody (ab54583, 1 µg/1 x 10⁶ cells) for 30 minutes at 22°C. The secondary antibody used was DyLight[®] 488 goat anti-mouse IgG (H+L) (ab96879) at 1/500 dilution for 30 minutes at 22°C. Isotype control antibody (black line) was mouse IgG1 [ICIGG1] (ab91353, 2 µg/1 x 10⁶ cells) used under the same conditions. Acquisition of >5,000 events was performed. This antibody gave a positive signal in MCF7 cells fixed with 4% paraformaldehyde (10 minutes)/permeabilized in 0.1% PBS-Tween used under the same conditions.

This image was generated using the ascites version of the product.



Western blot - Anti-Protein CASP antibody [2A10] - BSA and Azide free (ab54583)

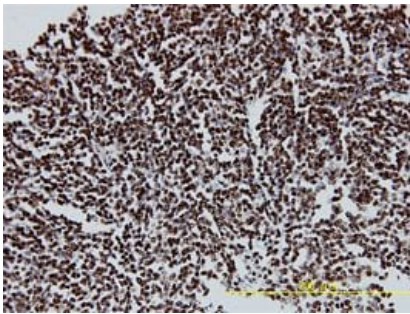
All lanes : Anti-Protein CASP antibody [2A10] - BSA and Azide free (ab54583) at 5 µg/ml

Lane 1 : Protein CASP transfected HEK-293T (human epithelial cell line from embryonic kidney transformed with large T antigen) cell lysate

Lane 2 : Non-transfected HEK-293T (human epithelial cell line from embryonic kidney transformed with large T antigen) cell lysate

Predicted band size: 77.5 kDa

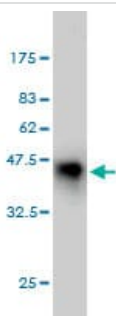
This image was generated using the ascites version of the product.



Immunohistochemistry (Formalin/PFA-fixed paraffin-embedded sections) - Anti-Protein CASP antibody [2A10] - BSA and Azide free (ab54583)

Formalin-fixed, paraffin-embedded human malignant lymphoma, diffuse large B tissue stained for Protein CASP with ab54583 at 5 µg/ml in immunohistochemical analysis.

This image was generated using the ascites version of the product.



Western blot - Anti-Protein CASP antibody [2A10] - BSA and Azide free (ab54583)

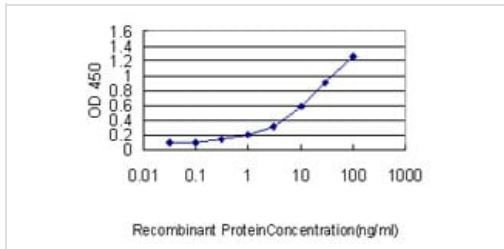
Anti-Protein CASP antibody [2A10] - BSA and Azide free (ab54583) at 5 µg/ml + Tagged recombinant Protein CASP protein

Predicted band size: 77.5 kDa

This antibody has only been tested in WB against the recombinant fragment used as immunogen. We have no data on the detection of endogenous protein.

Expected MW 38 kDa.

This image was generated using the ascites version of the product.



Detection limit of ab54583 is approximately 0.03 ng/ml as a capture antibody.

This image was generated using the ascites version of the product.

Sandwich ELISA - Anti-Protein CASP antibody
[2A10] - BSA and Azide free (ab54583)

Please note: All products are "FOR RESEARCH USE ONLY. NOT FOR USE IN DIAGNOSTIC PROCEDURES"

Our Abpromise to you: Quality guaranteed and expert technical support

- Replacement or refund for products not performing as stated on the datasheet
- Valid for 12 months from date of delivery
- Response to your inquiry within 24 hours
- We provide support in Chinese, English, French, German, Japanese and Spanish
- Extensive multi-media technical resources to help you
- We investigate all quality concerns to ensure our products perform to the highest standards

If the product does not perform as described on this datasheet, we will offer a refund or replacement. For full details of the Abpromise, please visit <https://www.abcam.co.jp/abpromise> or contact our technical team.

Terms and conditions

- Guarantee only valid for products bought direct from Abcam or one of our authorized distributors