


Anti-Proteasome 20S LMP2 antibody [EPR13785] ab184172

KO 評価済 リコンビナント RabMAb

6 References 画像数 5

製品の概要

製品名	Anti-Proteasome 20S LMP2 antibody [EPR13785]
製品の詳細	Rabbit monoclonal [EPR13785] to Proteasome 20S LMP2
由来種	Rabbit
アプリケーション	適用あり: WB, ICC/IF, IP
種交差性	交差種: Mouse, Human 交差が予測される動物種: Rat 
免疫原	Synthetic peptide. This information is proprietary to Abcam and/or its suppliers.
ポジティブ・コントロール	Ramos, A431 and Raji cell lysates; HL60 cells.
特記事項	<p>This product is a recombinant monoclonal antibody, which offers several advantages including:</p> <ul style="list-style-type: none"> - High batch-to-batch consistency and reproducibility - Improved sensitivity and specificity - Long-term security of supply - Animal-free production <p>For more information see here.</p> <p>Our RabMAb[®] technology is a patented hybridoma-based technology for making rabbit monoclonal antibodies. For details on our patents, please refer to RabMAb[®] patents.</p>

製品の特性

製品の状態	Liquid
保存方法	Shipped at 4°C. Store at +4°C short term (1-2 weeks). Upon delivery aliquot. Store at -20°C long term. Avoid freeze / thaw cycle.
バッファー	<p>pH: 7.2</p> <p>Preservative: 0.01% Sodium azide</p> <p>Constituents: PBS, 40% Glycerol, 0.05% BSA</p>
精製度	Protein A purified
ポリ/モノ	モノクローナル
クローン名	EPR13785
アイソタイプ	IgG

アプリケーション

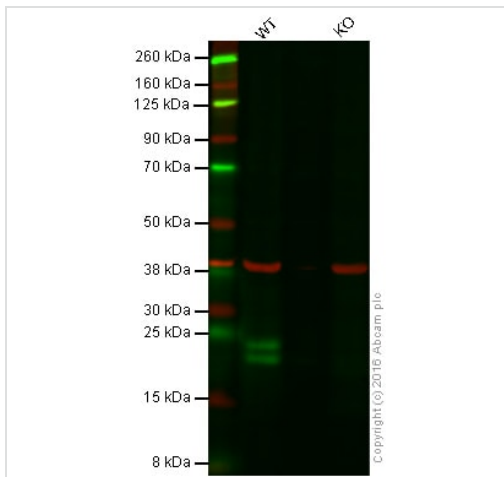
The Abpromise guarantee **Abpromise保証は、** 次のテスト済みアプリケーションにおけるab184172の使用に適用されます
アプリケーションノートには、推奨の開始希釈率がありますが、適切な希釈率につきましてはご検討ください。

アプリケーション	Abreviews	特記事項
WB		1/10000 - 1/100000. Detects a band of approximately 21 kDa (predicted molecular weight: 23 kDa).
ICC/IF		1/100.
IP		1/50.

ターゲット情報

機能	The proteasome is a multicatalytic proteinase complex which is characterized by its ability to cleave peptides with Arg, Phe, Tyr, Leu, and Glu adjacent to the leaving group at neutral or slightly basic pH. The proteasome has an ATP-dependent proteolytic activity. This subunit is involved in antigen processing to generate class I binding peptides. Replacement of PSMB6 by PSMB9 increases the capacity of the immunoproteasome to cleave model peptides after hydrophobic and basic residues.
配列類似性	Belongs to the peptidase T1B family.
発生段階	Highly expressed in immature dendritic cells (at protein level).
翻訳後修飾	Autocleaved. The resulting N-terminal Thr residue of the mature subunit is responsible for the nucleophile proteolytic activity.
細胞内局在	Cytoplasm. Nucleus.

画像



Western blot - Anti-Proteasome 20S LMP2 antibody [EPR13785] (ab184172)

Lane 1: Wild-type HAP1 cell lysate (20 µg)

Lane 2: Proteasome 20S LMP2 knockout HAP1 cell lysate (20 µg)

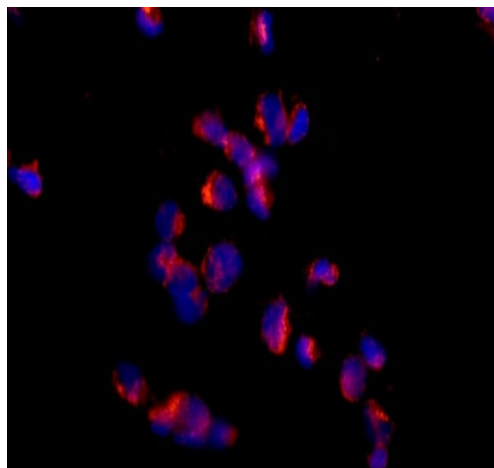
Lanes 1 - 2: Merged signal (red and green). Green - ab184172

observed at 22 and 24 kDa. Red - loading control, [ab8245](#),

observed at 37 kDa.

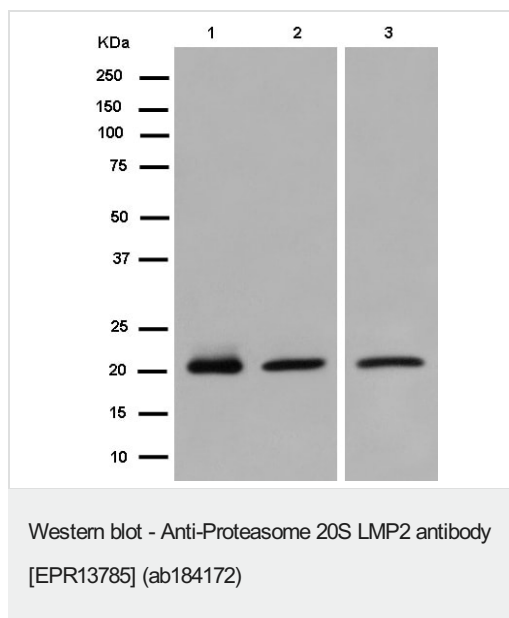
ab184172 was shown to specifically react with Proteasome 20S LMP2 when Proteasome 20S LMP2 knockout samples were used.

Wild-type and Proteasome 20S LMP2 knockout samples were subjected to SDS-PAGE. ab184172 and [ab8245](#) (loading control to GAPDH) were both diluted 1/10 000 and incubated overnight at 4°C. Blots were developed with Goat anti-Rabbit IgG H&L (IRDye® 800CW) preadsorbed ([ab216773](#)) and Goat anti-Mouse IgG H&L (IRDye® 680RD) preadsorbed ([ab216776](#)) secondary antibodies at 1/10000 dilution for 1 hour at room temperature before imaging.



Immunocytochemistry/ Immunofluorescence - Anti-Proteasome 20S LMP2 antibody [EPR13785] (ab184172)

Immunofluorescent analysis of 4% paraformaldehyde fixed HL-60 (Human promyelocytic leukemia cell line) cells labeling Proteasome 20S LMP2 using ab184172 at 1/100 dilution (red). A Goat anti rabbit IgG (Alexa Fluor®555) at 1/200 dilution was used as secondary antibody. Counterstain: DAPI (blue).



All lanes : Anti-EXTL1 antibody - C-terminal (**ab174172**) at 1/100000 dilution

Lane 1 : Ramos cell lysate

Lane 2 : A431 cell lysate

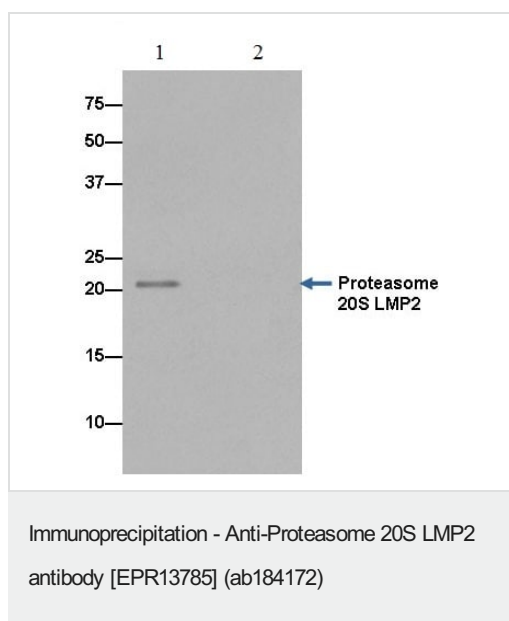
Lane 3 : Raji cell lysate

Lysates/proteins at 20 µg per lane.

Secondary

All lanes : Goat Anti-Rabbit IgG, (H+L), Peroxidase conjugated at 1/1000 dilution

Predicted band size: 23 kDa



Immunoprecipitation analysis of Raji cells labeling Proteasome 20S LMP2 using ab184172 at 1/50 dilution (Lane 1). A Anti-Rabbit IgG (HRP), specific to the non-reduced form of IgG at 1/1500 was used as secondary antibody. Lane 2: PBS instead of Raji lysates. Blocking/dilution buffer and concentration: 5% NFDM/TBST.

Why choose a recombinant antibody?



Research with confidence
Consistent and reproducible results



Long-term and scalable supply
Recombinant technology



Success from the first experiment
Confirmed specificity



Ethical standards compliant
Animal-free production

Anti-Proteasome 20S LMP2 antibody [EPR13785]
(ab184172)

Please note: All products are "FOR RESEARCH USE ONLY. NOT FOR USE IN DIAGNOSTIC PROCEDURES"

Our Abpromise to you: Quality guaranteed and expert technical support

- Replacement or refund for products not performing as stated on the datasheet
- Valid for 12 months from date of delivery
- Response to your inquiry within 24 hours
- We provide support in Chinese, English, French, German, Japanese and Spanish
- Extensive multi-media technical resources to help you
- We investigate all quality concerns to ensure our products perform to the highest standards

If the product does not perform as described on this datasheet, we will offer a refund or replacement. For full details of the Abpromise, please visit <https://www.abcam.co.jp/abpromise> or contact our technical team.

Terms and conditions

- Guarantee only valid for products bought direct from Abcam or one of our authorized distributors