




### Anti-Proteasome 20S LMP2 antibody ab3328

★★★★★ [5 Abreviews](#) [36 References](#) [画像数 2](#)

#### 製品の概要

|              |   |
|--------------|---|
| 製品名          | Anti-Proteasome 20S LMP2 antibody   |
| 製品の詳細        | Rabbit polyclonal to Proteasome 20S LMP2  |
| 由来種          | Rabbit  |
| アプリケーション     | <b>適用あり:</b> WB   |
| 種交差性         | <b>交差種:</b> Mouse, Human<br><b>交差が予測される動物種:</b> Rat, Cow   |
| 免疫原          | Synthetic peptide corresponding to Human Proteasome 20S LMP2 aa 206-219.<br>Sequence:<br>RVILGNELPKFYDE<br><br>Database link: <a href="#">P28065</a><br>(Peptide available as <a href="#">ab4944</a> ) <div>  <a href="#">Run BLAST with</a>  <a href="#">Run BLAST with</a> </div>   |
| ポジティブ・コントロール | WB: HeLa cells, mouse embryo fibroblast cells   |
| 特記事項         | <p>The Life Science industry has been in the grips of a reproducibility crisis for a number of years. Abcam is leading the way in addressing this with our range of recombinant monoclonal antibodies and knockout edited cell lines for gold-standard validation. Please check that this product meets your needs before purchasing.</p> <p>If you have any questions, special requirements or concerns, please send us an inquiry and/or contact our Support team ahead of purchase. Recommended alternatives for this product can be found below, along with publications, customer reviews and Q&amp;As</p> |

#### 製品の特性

|       |  |
|-------|--|
| 製品の状態 | Liquid   |
| 保存方法  | Shipped at 4°C. Store at +4°C short term (1-2 weeks). Upon delivery aliquot. Store at -20°C or -80°C. Avoid freeze / thaw cycle. |
| バッファー | Constituents: 0.1% BSA, 99% PBS  |
| 精製度   | Immunogen affinity purified  |
| ポリ/モノ | ポリクローナル  |

アプリケーション

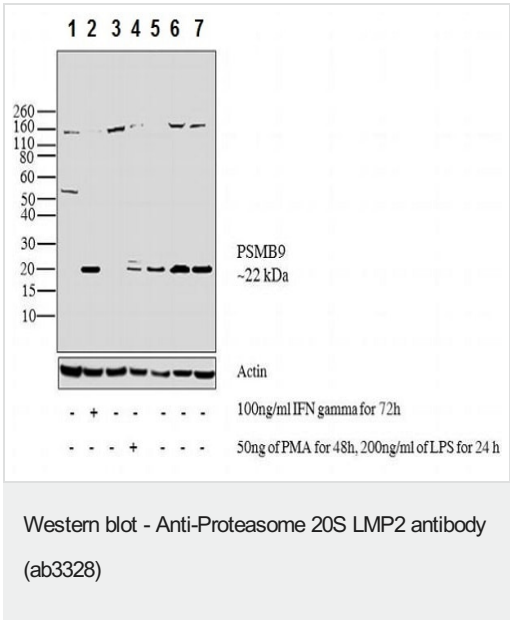
The Abpromise guarantee      **Abpromise保証は、**次のテスト済みアプリケーションにおけるab3328の使用に適用されます  
アプリケーションノートには、推奨の開始希釈率がありますが、適切な希釈率につきましてはご確認ください。

| アプリケーション | Abreviews | 特記事項   |
|----------|-----------|--|
| WB       | ★★★★☆ (5) | Use a concentration of 1 µg/ml. (worked at 1/2000 (PMID 17114438)) |

ターゲット情報

|       |   |
|-------|---|
| 機能    | The proteasome is a multicatalytic proteinase complex which is characterized by its ability to cleave peptides with Arg, Phe, Tyr, Leu, and Glu adjacent to the leaving group at neutral or slightly basic pH. The proteasome has an ATP-dependent proteolytic activity. This subunit is involved in antigen processing to generate class I binding peptides. Replacement of PSMB6 by PSMB9 increases the capacity of the immunoproteasome to cleave model peptides after hydrophobic and basic residues. |
| 配列類似性 | Belongs to the peptidase T1B family.  |
| 発生段階  | Highly expressed in immature dendritic cells (at protein level).  |
| 翻訳後修飾 | Autocleaved. The resulting N-terminal Thr residue of the mature subunit is responsible for the nucleophile proteolytic activity.  |
| 細胞内局在 | Cytoplasm. Nucleus.   |

画像



**All lanes :** Anti-Proteasome 20S LMP2 antibody (ab3328) at 2 µg/ml

**Lane 1 :** HeLa (human epithelial cell line from cervix adenocarcinoma) whole cell lysate

**Lane 2 :** HeLa (human epithelial cell line from cervix adenocarcinoma) treated with 100 ng/mL IFN gamma for 72 hours, whole cell lysate

**Lane 3 :** THP-1 (human monocytic leukemia cell line) whole cell lysate

**Lane 4 :** THP-1 (human monocytic leukemia cell line) treated with 50 ng/mL PMA for 48 hours and 200 ng/mL LPS for 24 hours, whole cell lysate

**Lane 5 :** U937 (human histiocytic lymphoma cell line) whole cell lysate

**Lane 6 :** Raji (human Burkitt's lymphoma cell line) whole cell lysate

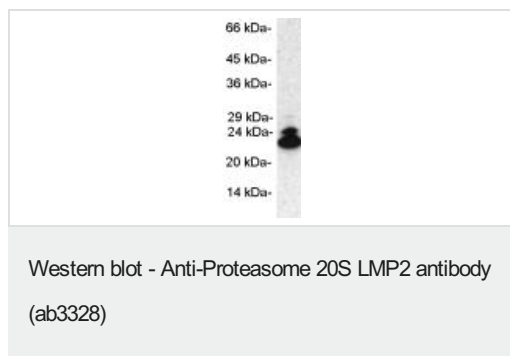
**Lane 7** : Ramos (human Burkitt's lymphoma cell line) whole cell lysate

Lysates/proteins at 30 µg per lane.

### Secondary

**All lanes** : Goat anti-Rabbit IgG (H+L) HRP conjugate at 0.4 µg/ml

Developed using the ECL technique.



Western blot of proteasome 20S LMP2 in 50 µg mouse embryo fibroblast cell extract using ab3328.

**Please note:** All products are "FOR RESEARCH USE ONLY. NOT FOR USE IN DIAGNOSTIC PROCEDURES"

### Our Abpromise to you: Quality guaranteed and expert technical support

---

- Replacement or refund for products not performing as stated on the datasheet
- Valid for 12 months from date of delivery
- Response to your inquiry within 24 hours
- We provide support in Chinese, English, French, German, Japanese and Spanish
- Extensive multi-media technical resources to help you
- We investigate all quality concerns to ensure our products perform to the highest standards

If the product does not perform as described on this datasheet, we will offer a refund or replacement. For full details of the Abpromise, please visit <https://www.abcam.co.jp/abpromise> or contact our technical team.

### Terms and conditions

---

- Guarantee only valid for products bought direct from Abcam or one of our authorized distributors