


Anti-Proteasome 20S C2/HC2 antibody ab82521

画像数 2

製品の概要

製品名	Anti-Proteasome 20S C2/HC2 antibody
製品の詳細	Rabbit polyclonal to Proteasome 20S C2/HC2
由来種	Rabbit
アプリケーション	適用あり: WB
種交差性	<p>交差種: Mouse, Rat, Human</p> <p>交差が予測される動物種: Cow, Zebrafish, Rainbow trout, Leaf frog, Orangutan, Zebra finch</p> 
免疫原	<p>Synthetic peptide corresponding to Human Proteasome 20S C2/HC2 aa 1-100 conjugated to keyhole limpet haemocyanin.</p> <p>Database link: P25786</p> <p>(Peptide available as ab93073)</p>
ポジティブ・コントロール	<p>Recombinant Human Proteasome 20S C2/HC2 protein (ab116156) can be used as a positive control in WB. This antibody gave a positive signal in the following lysates: HeLa whole cell; HepG2 whole cell; Jurkat whole cell; MCF7 whole cell; PC3 whole cell; HEK293 whole cell; human liver tissue; mouse heart tissue; rat heart tissue.</p>
特記事項	<p>The Life Science industry has been in the grips of a reproducibility crisis for a number of years. Abcam is leading the way in addressing this with our range of recombinant monoclonal antibodies and knockout edited cell lines for gold-standard validation. Please check that this product meets your needs before purchasing.</p> <p>If you have any questions, special requirements or concerns, please send us an inquiry and/or contact our Support team ahead of purchase. Recommended alternatives for this product can be found below, along with publications, customer reviews and Q&As</p>

製品の特性

製品の状態	Liquid
保存方法	Shipped at 4°C. Store at +4°C short term (1-2 weeks). Upon delivery aliquot. Store at -20°C or -80°C. Avoid freeze / thaw cycle.
バッファー	<p>pH: 7.40</p> <p>Preservative: 0.02% Sodium azide</p> <p>Constituent: PBS</p>

Batches of this product that have a concentration < 1mg/ml may have BSA added as a stabilising agent. If you would like information about the formulation of a specific lot, please contact our scientific support team who will be happy to help.

精製度	Immunogen affinity purified
ポリ/モノ	ポリクローナル
アイソタイプ	IgG

アプリケーション

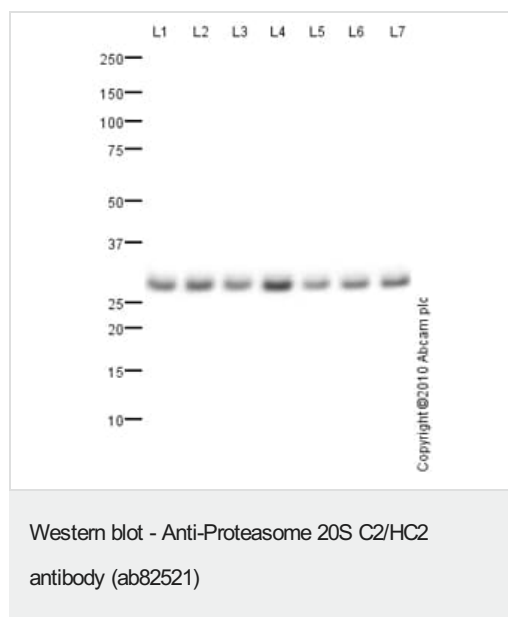
The Abpromise guarantee **Abpromise保証は、** 次のテスト済みアプリケーションにおけるab82521の使用に適用されます
アプリケーションノートには、推奨の開始希釈率がありますが、適切な希釈率につきましてはご検討ください。

アプリケーション	Abreviews	特記事項
WB		Use a concentration of 1 µg/ml. Detects a band of approximately 30 kDa (predicted molecular weight: 30 kDa).

ターゲット情報

機能	The proteasome is a multicatalytic proteinase complex which is characterized by its ability to cleave peptides with Arg, Phe, Tyr, Leu, and Glu adjacent to the leaving group at neutral or slightly basic pH. The proteasome has an ATP-dependent proteolytic activity. Mediates the lipopolysaccharide-induced signal transduction in the macrophage proteasome (By similarity). Might be involved in the anti-inflammatory response of macrophages during the interaction with C.albicans heat-inactivated cells.
配列類似性	Belongs to the peptidase T1A family.
細胞内局在	Cytoplasm. Nucleus.

画像



All lanes : Anti-Proteasome 20S C2/HC2 antibody (ab82521) at 1 µg/ml

Lane 1 : HeLa (Human epithelial carcinoma cell line) Whole Cell Lysate

Lane 2 : HepG2 (Human hepatocellular liver carcinoma cell line) Whole Cell Lysate

Lane 3 : Human liver tissue lysate - total protein ([ab29889](#))

Lane 4 : Jurkat (Human T cell lymphoblast-like cell line) Whole Cell Lysate

Lane 5 : MCF7 (Human breast adenocarcinoma cell line) Whole Cell Lysate

Lane 6 : PC-3 whole cell lysate ([ab3954](#))

Lane 7 : HEK293 (Human embryonic kidney cell line) Whole Cell

Lysate

Lysates/proteins at 10 µg per lane.

Secondary

All lanes : Goat polyclonal to Rabbit IgG - H&L - Pre-Adsorbed (HRP) at 1/3000 dilution

Developed using the ECL technique.

Performed under reducing conditions.

Predicted band size: 30 kDa

Observed band size: 30 kDa

Exposure time: 3 minutes



Western blot - Anti-Proteasome 20S C2/HC2 antibody (ab82521)

All lanes : Anti-Proteasome 20S C2/HC2 antibody (ab82521) at 1 µg/ml

Lane 1 : Heart (Mouse) Tissue Lysate

Lane 2 : Heart (Rat) Tissue Lysate

Lysates/proteins at 10 µg per lane.

Secondary

All lanes : Goat Anti-Rabbit IgG H&L (HRP) preadsorbed ([ab97080](#)) at 1/5000 dilution

Developed using the ECL technique.

Performed under reducing conditions.

Predicted band size: 30 kDa

Observed band size: 30 kDa

Additional bands at: 48 kDa. We are unsure as to the identity of these extra bands.

Exposure time: 4 minutes

Please note: All products are "FOR RESEARCH USE ONLY. NOT FOR USE IN DIAGNOSTIC PROCEDURES"

Our Abpromise to you: Quality guaranteed and expert technical support

- Replacement or refund for products not performing as stated on the datasheet
- Valid for 12 months from date of delivery
- Response to your inquiry within 24 hours

- We provide support in Chinese, English, French, German, Japanese and Spanish
- Extensive multi-media technical resources to help you
- We investigate all quality concerns to ensure our products perform to the highest standards

If the product does not perform as described on this datasheet, we will offer a refund or replacement. For full details of the Abpromise, please visit <https://www.abcam.co.jp/abpromise> or contact our technical team.

Terms and conditions

- Guarantee only valid for products bought direct from Abcam or one of our authorized distributors