




Anti-Proteasome 20S alpha 5/PSMA5 antibody ab11437

8 References **画像数 3**

製品の概要

製品名	Anti-Proteasome 20S alpha 5/PSMA5 antibody
製品の詳細	Rabbit polyclonal to Proteasome 20S alpha 5/PSMA5
由来種	Rabbit
アプリケーション	適用あり: IHC-P, ICC/IF, WB
種交差性	交差種: Human 交差が予測される動物種: Cow, Zebrafish 
免疫原	Synthetic peptide corresponding to Human Proteasome 20S alpha 5/PSMA5 aa 120-133. Sequence: ALQFGEDADPGAM Database link: P28066 (Peptide available as ab41791)
	 Run BLAST with  Run BLAST with

特記事項

The Life Science industry has been in the grips of a reproducibility crisis for a number of years. Abcam is leading the way in addressing this with our range of recombinant monoclonal antibodies and knockout edited cell lines for gold-standard validation. Please check that this product meets your needs before purchasing.

If you have any questions, special requirements or concerns, please send us an inquiry and/or contact our Support team ahead of purchase. Recommended alternatives for this product can be found below, along with publications, customer reviews and Q&As

製品の特性

製品の状態	Liquid
保存方法	Shipped at 4°C. Store at +4°C short term (1-2 weeks). Upon delivery aliquot. Store at -20°C. Avoid freeze / thaw cycle.
バッファー	Preservative: 0.05% Sodium azide Constituents: 99% PBS, 0.1% BSA
精製度	Immunogen affinity purified
ポリ/モノ	ポリクローナル
アイソタイプ	IgG

アプリケーション

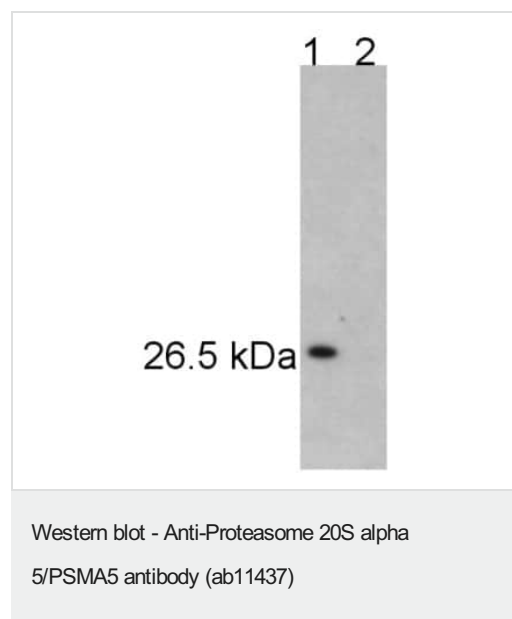
The Abpromise guarantee Abpromise保証は、 次のテスト済みアプリケーションにおけるab11437の使用に適用されます
アプリケーションノートには、推奨の開始希釈率がありますが、適切な希釈率につきましてはご確認ください。

アプリケーション	Abreviews	特記事項
IHC-P		Use a concentration of 5 µg/ml. Perform heat mediated antigen retrieval with citrate buffer pH 6 before commencing with IHC staining protocol.
ICC/IF		Use a concentration of 1 µg/ml.
WB		Use a concentration of 1 µg/ml. Detects a band of approximately 26.5 kDa (predicted molecular weight: 26.5 kDa).

ターゲット情報

機能	The proteasome is a multicatalytic proteinase complex which is characterized by its ability to cleave peptides with Arg, Phe, Tyr, Leu, and Glu adjacent to the leaving group at neutral or slightly basic pH. The proteasome has an ATP-dependent proteolytic activity.
組織特異性	Expressed in fetal brain (at protein level).
配列類似性	Belongs to the peptidase T1A family.
細胞内局在	Cytoplasm. Nucleus.

画像



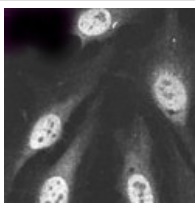
All lanes : Anti-Proteasome 20S alpha 5/PSMA5 antibody (ab11437)

Lane 1 : HeLa cell extract.

Lane 2 : HeLa cell extract with blocking peptide.

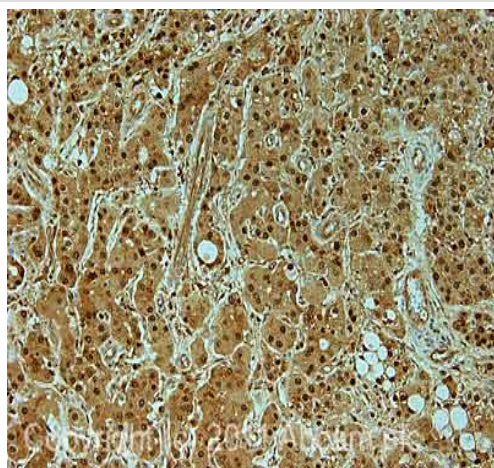
Predicted band size: 26.5 kDa

Observed band size: 26.5 kDa



Immunocytochemistry/ Immunofluorescence - Anti-Proteasome 20S alpha 5/PSMA5 antibody (ab11437)

Immunofluorescence of HeLa cells using ab11437.



Immunohistochemistry (Formalin/PFA-fixed paraffin-embedded sections) - Anti-Proteasome 20S alpha 5/PSMA5 antibody (ab11437)

IHC image of ab11437 staining in human liver carcinoma liver formalin fixed paraffin embedded tissue section, performed on a Leica Bond™ system using the standard protocol F. The section was pre-treated using heat mediated antigen retrieval with sodium citrate buffer (pH6, epitope retrieval solution 1) for 20 mins. The section was then incubated with ab11437, 5µg/ml, for 15 mins at room temperature and detected using an HRP conjugated compact polymer system. DAB was used as the chromogen. The section was then counterstained with haematoxylin and mounted with DPX.

For other IHC staining systems (automated and non-automated) customers should optimize variable parameters such as antigen retrieval conditions, primary antibody concentration and antibody incubation times.

Please note: All products are "FOR RESEARCH USE ONLY. NOT FOR USE IN DIAGNOSTIC PROCEDURES"

Our Abpromise to you: Quality guaranteed and expert technical support

- Replacement or refund for products not performing as stated on the datasheet
- Valid for 12 months from date of delivery
- Response to your inquiry within 24 hours
- We provide support in Chinese, English, French, German, Japanese and Spanish
- Extensive multi-media technical resources to help you
- We investigate all quality concerns to ensure our products perform to the highest standards

If the product does not perform as described on this datasheet, we will offer a refund or replacement. For full details of the Abpromise, please visit <https://www.abcam.co.jp/abpromise> or contact our technical team.

Terms and conditions

- Guarantee only valid for products bought direct from Abcam or one of our authorized distributors