

Anti-Prostate Specific Antigen antibody - Catalytic domain ab40949

1 References **画像数 1**

製品の概要

製品名	Anti-Prostate Specific Antigen antibody - Catalytic domain
製品の詳細	Rabbit polyclonal to Prostate Specific Antigen - Catalytic domain
由来種	Rabbit
特異性	This antibody is specific for Kallikrein 3, it does not react with the other Kallikreins (1,2,4-15).
アプリケーション	適用あり: WB
種交差性	交差種: Human
免疫原	Synthetic peptide based on the catalytic domain of human Kallikrein 3. (Peptide available as ab43085 .)
特記事項	<p>The Life Science industry has been in the grips of a reproducibility crisis for a number of years. Abcam is leading the way in addressing this with our range of recombinant monoclonal antibodies and knockout edited cell lines for gold-standard validation. Please check that this product meets your needs before purchasing.</p> <p>If you have any questions, special requirements or concerns, please send us an inquiry and/or contact our Support team ahead of purchase. Recommended alternatives for this product can be found below, along with publications, customer reviews and Q&As</p>

製品の特性

製品の状態	Liquid
保存方法	Shipped at 4°C. Upon delivery aliquot and store at -20°C. Avoid freeze / thaw cycles.
バッファー	Preservative: 0.05% Sodium azide Constituent: 50% Glycerol
精製度	Immunogen affinity purified
ポリ/モノ	ポリクローナル
アイソタイプ	IgG

アプリケーション

The Abpromise guarantee

Abpromise保証は、次のテスト済みアプリケーションにおけるab40949の使用に適用されます

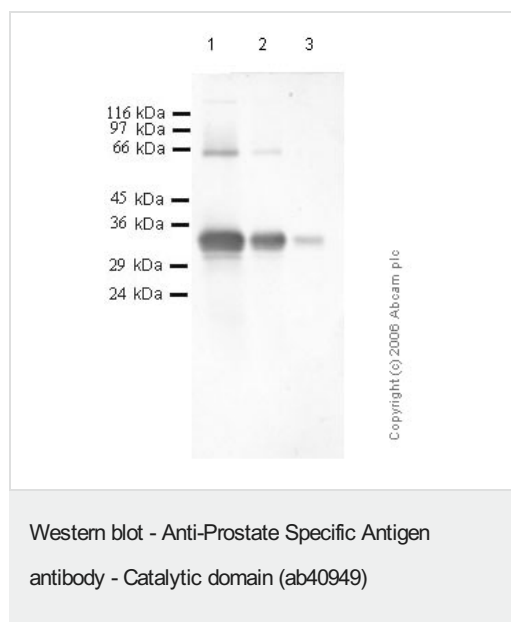
アプリケーションノートには、推奨の開始希釈率がありますが、適切な希釈率につきましてはご検討ください。

アプリケーション	Abreviews	特記事項
WB		1/1000. Predicted molecular weight: 29 kDa. 1/1000 when using colorimetric substrates such as BCIP/NBT and 1/5000 for chemiluminescent substrates. Predicted molecular weight: 29 kDa. Dilution optimised using Chromogenic detection.

ターゲット情報

機能	Hydrolyzes semenogelin-1 thus leading to the liquefaction of the seminal coagulum.
配列類似性	Belongs to the peptidase S1 family. Kallikrein subfamily. Contains 1 peptidase S1 domain.
細胞内局在	Secreted.

画像



All lanes : Anti-Prostate Specific Antigen antibody - Catalytic domain (ab40949) at 1/1000 dilution

Lane 1 : Human Kallikrein 3 at 0.05 µg

Lane 2 : Human Kallikrein 3 at 0.01 µg

Lane 3 : Human Kallikrein 3 at 0.001 µg

Predicted band size: 29 kDa

Observed band size: 33 kDa

Please note: All products are "FOR RESEARCH USE ONLY. NOT FOR USE IN DIAGNOSTIC PROCEDURES"

Our Abpromise to you: Quality guaranteed and expert technical support

- Replacement or refund for products not performing as stated on the datasheet
- Valid for 12 months from date of delivery
- Response to your inquiry within 24 hours
- We provide support in Chinese, English, French, German, Japanese and Spanish
- Extensive multi-media technical resources to help you

- We investigate all quality concerns to ensure our products perform to the highest standards

If the product does not perform as described on this datasheet, we will offer a refund or replacement. For full details of the Abpromise, please visit <https://www.abcam.co.jp/abpromise> or contact our technical team.

Terms and conditions

- Guarantee only valid for products bought direct from Abcam or one of our authorized distributors