

Anti-Prostate Specific Antigen antibody ab9537

★★★★★ [1 Abreviews](#) [7 References](#) [画像数 2](#)

製品の概要

製品名	Anti-Prostate Specific Antigen antibody
製品の詳細	Rabbit polyclonal to Prostate Specific Antigen
由来種	Rabbit
アプリケーション	適用あり: IHC-Fr, IHC-P, ICC/IF
種交差性	交差種: Human
免疫原	Full length native protein (purified) corresponding to Human Prostate Specific Antigen. Isolated from human seminal plasma. Database link: P07288
特記事項	<p>The Life Science industry has been in the grips of a reproducibility crisis for a number of years. Abcam is leading the way in addressing this with our range of recombinant monoclonal antibodies and knockout edited cell lines for gold-standard validation. Please check that this product meets your needs before purchasing.</p> <p>If you have any questions, special requirements or concerns, please send us an inquiry and/or contact our Support team ahead of purchase. Recommended alternatives for this product can be found below, along with publications, customer reviews and Q&As</p>

製品の特性

製品の状態	Liquid
保存方法	Shipped at 4°C. Store at +4°C short term (1-2 weeks). Store at -20°C or -80°C. Avoid freeze / thaw cycle.
バッファー	pH: 7.3 Preservative: 0.05% Sodium azide Constituent: 1% BSA
精製度	IgG fraction
ポリ/モノ	ポリクローナル
ミエローマ	unknown
アイソタイプ	IgG
軽鎖の種類	unknown

アプリケーション

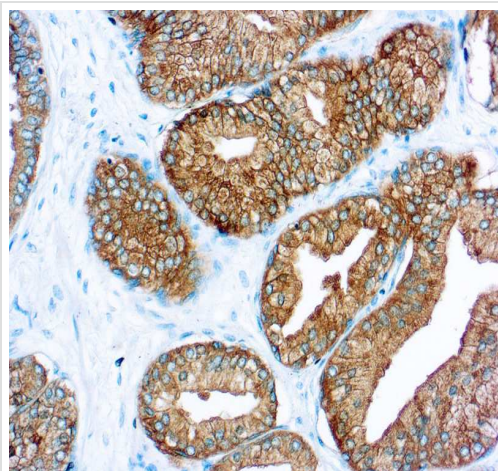
The Abpromise guarantee **Abpromise保証は、** 次のテスト済みアプリケーションにおけるab9537の使用に適用されます
アプリケーションノートには、推奨の開始希釈率がありますが、適切な希釈率につきましてはご検討ください。

アプリケーション	Abreviews	特記事項
IHC-Fr		Use at an assay dependent concentration.
IHC-P		1/50 - 1/150.
ICC/IF	★★★★★ (1)	Use at an assay dependent concentration.

ターゲット情報

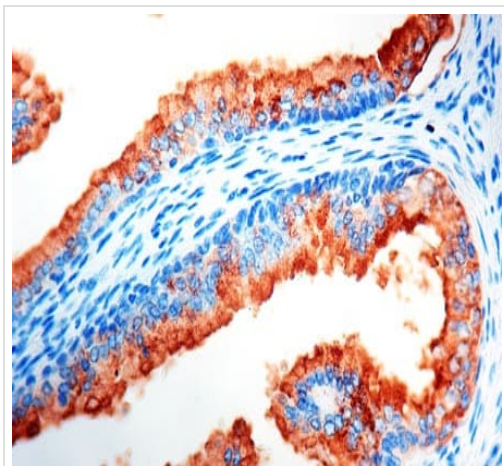
機能	Hydrolyzes semenogelin-1 thus leading to the liquefaction of the seminal coagulum.
配列類似性	Belongs to the peptidase S1 family. Kallikrein subfamily. Contains 1 peptidase S1 domain.
細胞内局在	Secreted.

画像



Formalin-fixed, paraffin-embedded human prostate carcinoma tissue stained for Prostate Specific Antigen using ab9537 at 1/50 dilution in immunohistochemical analysis. Antigen retrieval with citrate buffer pH 6.0.

Immunohistochemistry (Formalin/PFA-fixed paraffin-embedded sections) - Anti-Prostate Specific Antigen antibody (ab9537)



Immunohistochemical analysis of formalin-fixed, paraffin-embedded Human prostate carcinoma tissue, staining Prostate Specific Antigen with ab9537. Staining was detected using DAB.

Immunohistochemistry (Formalin/PFA-fixed paraffin-embedded sections) - Anti-Prostate Specific Antigen antibody (ab9537)

Please note: All products are "FOR RESEARCH USE ONLY. NOT FOR USE IN DIAGNOSTIC PROCEDURES"

Our Abpromise to you: Quality guaranteed and expert technical support

- Replacement or refund for products not performing as stated on the datasheet
- Valid for 12 months from date of delivery
- Response to your inquiry within 24 hours
- We provide support in Chinese, English, French, German, Japanese and Spanish
- Extensive multi-media technical resources to help you
- We investigate all quality concerns to ensure our products perform to the highest standards

If the product does not perform as described on this datasheet, we will offer a refund or replacement. For full details of the Abpromise, please visit <https://www.abcam.co.jp/abpromise> or contact our technical team.

Terms and conditions

- Guarantee only valid for products bought direct from Abcam or one of our authorized distributors