

Anti-Prostate Specific Antigen antibody [A67-B/E3] ab2218

1 References [画像数 2](#)

製品の概要

製品名	Anti-Prostate Specific Antigen antibody [A67-B/E3]
製品の詳細	Mouse monoclonal [A67-B/E3] to Prostate Specific Antigen
由来種	Mouse
特異性	This antibody is specific for PSA.
アプリケーション	適用あり: WB, IHC-P
種交差性	交差種: Human
免疫原	Tissue, cells or virus corresponding to Human Prostate Specific Antigen. 30 kDa protein fraction prepared from human seminal plasma
ポジティブ・コントロール	WB: Human seminal plasma. IHC-P: Human prostate tissue.
特記事項	<p>The Life Science industry has been in the grips of a reproducibility crisis for a number of years. Abcam is leading the way in addressing this with our range of recombinant monoclonal antibodies and knockout edited cell lines for gold-standard validation. Please check that this product meets your needs before purchasing.</p> <p>If you have any questions, special requirements or concerns, please send us an inquiry and/or contact our Support team ahead of purchase. Recommended alternatives for this product can be found below, along with publications, customer reviews and Q&As</p>

製品の特性

製品の状態	Liquid
保存方法	Shipped at 4°C. Store at +4°C short term (1-2 weeks). Upon delivery aliquot. Store at -20°C or -80°C. Avoid freeze / thaw cycle.
バッファー	<p>pH: 7.40</p> <p>Preservative: 0.097% Sodium azide</p> <p>Constituent: PBS</p>
精製度	Protein A purified
特記事項 (精製)	Purified from TCS. Purity >95% by SDS-PAGE.
ポリ/モノ	モノクローナル
クローン名	A67-B/E3
ミエローマ	unknown

アイソタイプ	IgG1
軽鎖の種類	unknown

アプリケーション

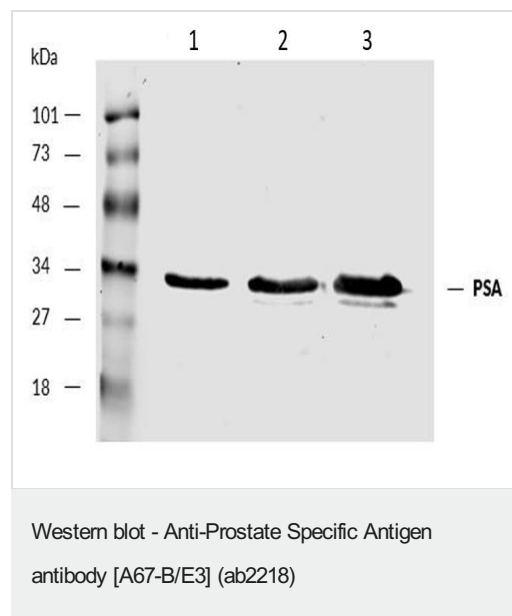
The Abpromise guarantee Abpromise保証は、 次のテスト済みアプリケーションにおけるab2218の使用に適用されます
アプリケーションノートには、推奨の開始希釈率がありますが、適切な希釈率につきましてはご検討ください。

アプリケーション	Abreviews	特記事項
WB		Use a concentration of 2 - 5 µg/ml. Predicted molecular weight: 29 kDa.
IHC-P		Use at an assay dependent concentration. Perform enzymatic antigen retrieval before commencing with IHC staining protocol.

ターゲット情報

機能	Hydrolyzes semenogelin-1 thus leading to the liquefaction of the seminal coagulum.
配列類似性	Belongs to the peptidase S1 family. Kallikrein subfamily. Contains 1 peptidase S1 domain.
細胞内局在	Secreted.

画像



All lanes : Anti-Prostate Specific Antigen antibody [A67-B/E3] (ab2218) at 5 µg/ml

All lanes : Human Seminal Plasma

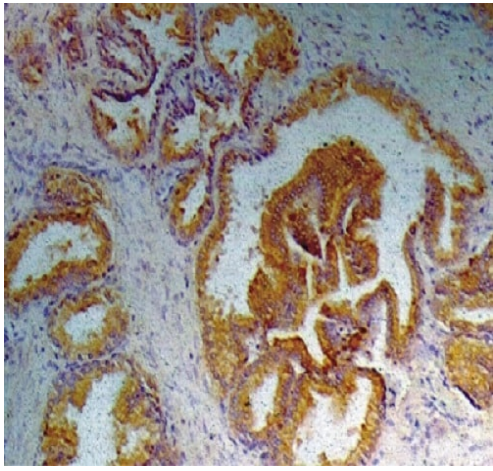
Secondary

All lanes : IRDye800-conjugated Anti-Mouse IgG1 Secondary Antibody

Performed under reducing conditions.

Predicted band size: 29 kDa

Observed band size: 30 kDa



Immunohistochemical analysis of human prostate tissue sections staining Prostate Specific Antigen with ab2218.

Immunohistochemistry (Formalin/PFA-fixed paraffin-embedded sections) - Anti-Prostate Specific Antigen antibody [A67-B/E3] (ab2218)

Please note: All products are "FOR RESEARCH USE ONLY. NOT FOR USE IN DIAGNOSTIC PROCEDURES"

Our Abpromise to you: Quality guaranteed and expert technical support

- Replacement or refund for products not performing as stated on the datasheet
- Valid for 12 months from date of delivery
- Response to your inquiry within 24 hours
- We provide support in Chinese, English, French, German, Japanese and Spanish
- Extensive multi-media technical resources to help you
- We investigate all quality concerns to ensure our products perform to the highest standards

If the product does not perform as described on this datasheet, we will offer a refund or replacement. For full details of the Abpromise, please visit <https://www.abcam.co.jp/abpromise> or contact our technical team.

Terms and conditions

- Guarantee only valid for products bought direct from Abcam or one of our authorized distributors