

Anti-Prostate Secretory Protein/PSP antibody [EPR7345] ab128897

リコンビナント **RabMAb**

画像数 3

製品の概要

製品名	Anti-Prostate Secretory Protein/PSP antibody [EPR7345]
製品の詳細	Rabbit monoclonal [EPR7345] to Prostate Secretory Protein/PSP
由来種	Rabbit
アプリケーション	適用あり: WB, IHC-P 適用なし: ICC/IF
種交差性	交差種: Human
免疫原	Synthetic peptide. This information is proprietary to Abcam and/or its suppliers.
ポジティブ・コントロール	Human prostate and Human prostate cancer lysates, Human prostate tissue.
特記事項	<p>This product is a recombinant monoclonal antibody, which offers several advantages including:</p> <ul style="list-style-type: none"> - High batch-to-batch consistency and reproducibility - Improved sensitivity and specificity - Long-term security of supply - Animal-free production <p>For more information see here.</p> <p>Our RabMAb[®] technology is a patented hybridoma-based technology for making rabbit monoclonal antibodies. For details on our patents, please refer to RabMAb[®] patents.</p> <p>Mouse, Rat: We have preliminary internal testing data to indicate this antibody may not react with these species. Please contact us for more information.</p>

製品の特性

製品の状態	Liquid
保存方法	Shipped at 4°C. Store at -20°C. Stable for 12 months at -20°C.
バッファー	<p>pH: 7.20</p> <p>Preservative: 0.01% Sodium azide</p> <p>Constituents: 9% PBS, 40% Glycerol (glycerin, glycerine), 0.05% BSA, 50% Tissue culture supernatant</p>
精製度	Protein A purified

ポリ/モノ	モノクローナル
クローン名	EPR7345
アイソタイプ	IgG

アプリケーション

The Abpromise guarantee **Abpromise保証は、** 次のテスト済みアプリケーションにおけるab128897の使用に適用されます
アプリケーションノートには、推奨の開始希釈率がありますが、適切な希釈率につきましてはご検討ください。

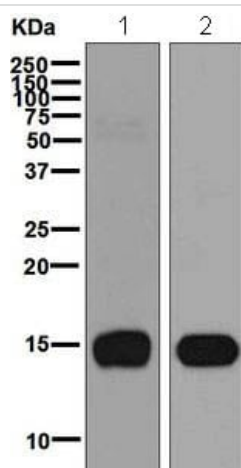
アプリケーション	Abreviews	特記事項
WB		1/10000 - 1/50000. Detects a band of approximately 16 kDa (predicted molecular weight: 13 kDa).
IHC-P		1/500 - 1/1000. Perform heat mediated antigen retrieval before commencing with IHC staining protocol.

追加情報 Is unsuitable for ICC/IF.

ターゲット情報

組織特異性	Strongly expressed in prostate, liver, kidney, breast and penis. Also expressed in pancreas, esophagus, stomach, deodenum, colon, trachea, lung, salivary glands and fallopian tube. PSP94 is expressed in lung and breast, whereas PSP57 is found in kidney and bladder.
関連疾患	Defects in MSMB are the cause of susceptibility to prostate cancer hereditary type 13 (HPC13) [MIM:611928]. It is a condition associated with familial predisposition to cancer of the prostate. Most prostate cancers are adenocarcinomas that develop in the acini of the prostatic ducts. Other rare histopathologic types of prostate cancer that occur in approximately 5% of patients include small cell carcinoma, mucinous carcinoma, prostatic ductal carcinoma, transitional cell carcinoma, squamous cell carcinoma, basal cell carcinoma, adenoid cystic carcinoma (basaloid), signet-ring cell carcinoma and neuroendocrine carcinoma.
配列類似性	Belongs to the beta-microseminoprotein family.
細胞内局在	Secreted. Sperm surface.

画像



Western blot - Anti-Prostate Secretory Protein/PSP antibody [EPR7345] (ab128897)

All lanes : Anti-Prostate Secretory Protein/PSP antibody [EPR7345] (ab128897) at 1/10000 dilution

Lane 1 : Human prostate lysate

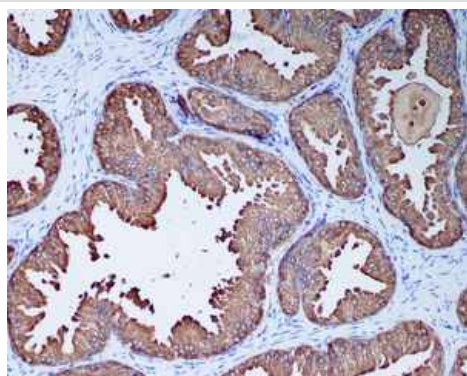
Lane 2 : Human prostate cancer lysate

Secondary

All lanes : HRP labelled goat anti-rabbit at 1/2000 dilution

Predicted band size: 13 kDa

Observed band size: 16 kDa



Immunohistochemistry (Formalin/PFA-fixed paraffin-embedded sections) - Anti-Prostate Secretory Protein/PSP antibody [EPR7345] (ab128897)

ab128897, at a dilution of 1/500, staining Prostate Secretory Protein/PSP in paraffin-embedded Human Prostate tissue by Immunohistochemistry.

Perform heat mediated antigen retrieval before commencing with IHC staining protocol.

Why choose a recombinant antibody?



Research with confidence
Consistent and reproducible results



Long-term and scalable supply
Recombinant technology



Success from the first experiment
Confirmed specificity



Ethical standards compliant
Animal-free production

Anti-Prostate Secretory Protein/PSP antibody
[EPR7345] (ab128897)

Please note: All products are "FOR RESEARCH USE ONLY. NOT FOR USE IN DIAGNOSTIC PROCEDURES"

Our Abpromise to you: Quality guaranteed and expert technical support

- Replacement or refund for products not performing as stated on the datasheet
- Valid for 12 months from date of delivery
- Response to your inquiry within 24 hours
- We provide support in Chinese, English, French, German, Japanese and Spanish
- Extensive multi-media technical resources to help you
- We investigate all quality concerns to ensure our products perform to the highest standards

If the product does not perform as described on this datasheet, we will offer a refund or replacement. For full details of the Abpromise, please visit <https://www.abcam.co.jp/abpromise> or contact our technical team.

Terms and conditions

- Guarantee only valid for products bought direct from Abcam or one of our authorized distributors