

Anti-Prostate Secretory Protein/PSP antibody ab196754

1 References [画像数 4](#)

製品の概要

製品名	Anti-Prostate Secretory Protein/PSP antibody
製品の詳細	Rabbit polyclonal to Prostate Secretory Protein/PSP
由来種	Rabbit
特異性	ab196754 detects endogenous level of total MSMB protein.
アプリケーション	適用あり: IHC-P, WB
種交差性	交差種: Mouse, Rat, Human
免疫原	Recombinant full length protein within Human Prostate Secretory Protein/PSP. The exact sequence is proprietary. Database link: P08118
ポジティブ・コントロール	Mouse liver, kidney and skeletal muscle tissue extracts; rat kidney, Human esophageal cancer and mouse lung tissues.
特記事項	<p>The Life Science industry has been in the grips of a reproducibility crisis for a number of years. Abcam is leading the way in addressing this with our range of recombinant monoclonal antibodies and knockout edited cell lines for gold-standard validation. Please check that this product meets your needs before purchasing.</p> <p>If you have any questions, special requirements or concerns, please send us an inquiry and/or contact our Support team ahead of purchase. Recommended alternatives for this product can be found below, along with publications, customer reviews and Q&As</p>

製品の特性

製品の状態	Liquid
保存方法	Shipped at 4°C. Store at +4°C short term (1-2 weeks). Upon delivery aliquot. Store at -20°C long term. Avoid freeze / thaw cycle.
バッファー	pH: 7.40 Preservative: 0.02% Sodium azide Constituents: 49% PBS, 50% Glycerol (glycerin, glycerine), 0.87% Sodium chloride PBS is without Mg ²⁺ and Ca ²⁺ .
精製度	Immunogen affinity purified
ポリ/モノ	ポリクローナル

アプリケーション

The Abpromise guarantee **Abpromise保証は、次のテスト済みアプリケーションにおけるab196754の使用に適用されず**
アプリケーションノートには、推奨の開始希釈率がありますが、適切な希釈率につきましてはご検討ください。

アプリケーション	Abreviews	特記事項
IHC-P		1/50 - 1/100.
WB		1/500 - 1/2000. Predicted molecular weight: 13 kDa.

ターゲット情報

組織特異性

Strongly expressed in prostate, liver, kidney, breast and penis. Also expressed in pancreas, esophagus, stomach, deodenum, colon, trachea, lung, salivary glands and fallopian tube. PSP94 is expressed in lung and breast, whereas PSP57 is found in kidney and bladder.

関連疾患

Defects in MSMB are the cause of susceptibility to prostate cancer hereditary type 13 (HPC13) [MIM:611928]. It is a condition associated with familial predisposition to cancer of the prostate. Most prostate cancers are adenocarcinomas that develop in the acini of the prostatic ducts. Other rare histopathologic types of prostate cancer that occur in approximately 5% of patients include small cell carcinoma, mucinous carcinoma, prostatic ductal carcinoma, transitional cell carcinoma, squamous cell carcinoma, basal cell carcinoma, adenoid cystic carcinoma (basaloid), signet-ring cell carcinoma and neuroendocrine carcinoma.

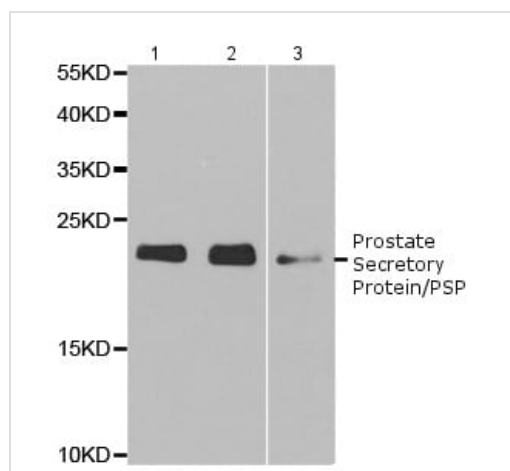
配列類似性

Belongs to the beta-microseminoprotein family.

細胞内局在

Secreted. Sperm surface.

画像



All lanes : Anti-Prostate Secretory Protein/PSP antibody
(ab196754) at 1/500 dilution

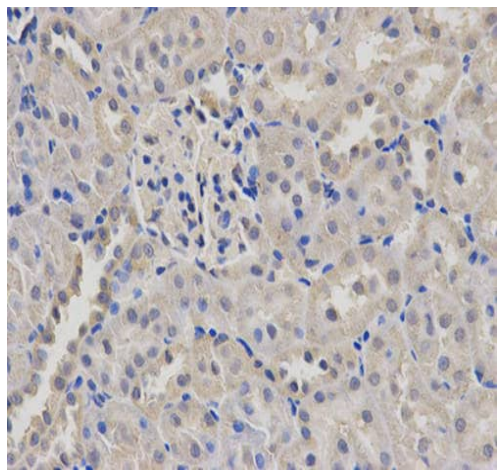
Lane 1 : Mouse liver extract

Lane 2 : Mouse kidney extract

Lane 3 : Mouse skeletal muscle extract

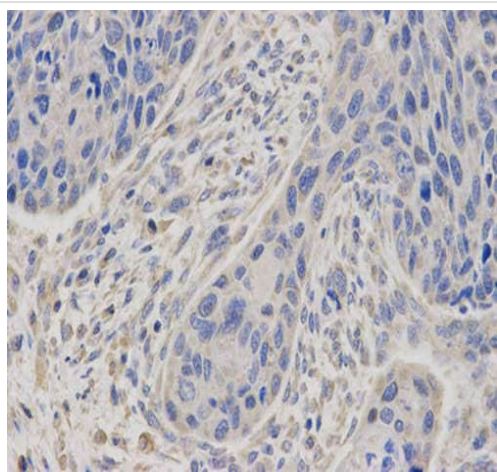
Predicted band size: 13 kDa

Western blot - Anti-Prostate Secretory Protein/PSP
antibody (ab196754)



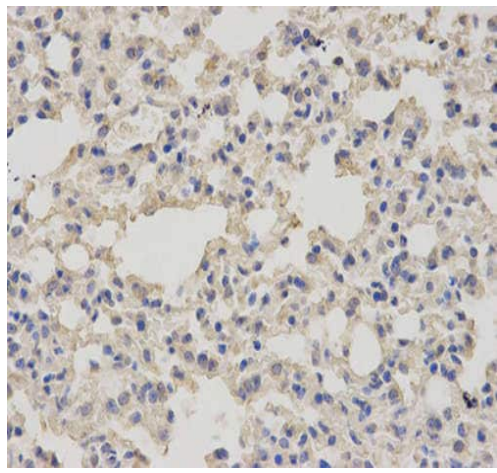
Immunohistochemical analysis of paraffin-embedded rat kidney tissue labeling Prostate Secretory Protein/PSP with ab196754 at a 1/100 dilution (400x lens).

Immunohistochemistry (Formalin/PFA-fixed paraffin-embedded sections) - Anti-Prostate Secretory Protein/PSP antibody (ab196754)



Immunohistochemical analysis of paraffin-embedded Human esophageal cancer tissue labeling Prostate Secretory Protein/PSP with ab196754 at a 1/100 dilution (400x lens).

Immunohistochemistry (Formalin/PFA-fixed paraffin-embedded sections) - Anti-Prostate Secretory Protein/PSP antibody (ab196754)



Immunohistochemical analysis of paraffin-embedded mouse lung tissue labeling Prostate Secretory Protein/PSP with ab196754 at a 1/100 dilution (400x lens).

Immunohistochemistry (Formalin/PFA-fixed paraffin-embedded sections) - Anti-Prostate Secretory Protein/PSP antibody (ab196754)

Please note: All products are "FOR RESEARCH USE ONLY. NOT FOR USE IN DIAGNOSTIC PROCEDURES"

Our Abpromise to you: Quality guaranteed and expert technical support

- Replacement or refund for products not performing as stated on the datasheet
- Valid for 12 months from date of delivery
- Response to your inquiry within 24 hours
- We provide support in Chinese, English, French, German, Japanese and Spanish
- Extensive multi-media technical resources to help you
- We investigate all quality concerns to ensure our products perform to the highest standards

If the product does not perform as described on this datasheet, we will offer a refund or replacement. For full details of the Abpromise, please visit <https://www.abcam.co.jp/abpromise> or contact our technical team.

Terms and conditions

- Guarantee only valid for products bought direct from Abcam or one of our authorized distributors