




Anti-Prostaglandin E Receptor EP1/PTGER1 antibody ab183073

★★★★★ [1 Abreviews](#) [2 References](#) [画像数 1](#)

製品の概要

製品名	Anti-Prostaglandin E Receptor EP1/PTGER1 antibody
製品の詳細	Rabbit polyclonal to Prostaglandin E Receptor EP1/PTGER1
由来種	Rabbit
アプリケーション	適用あり: WB
種交差性	交差種: Human 交差が予測される動物種: Mouse, Rat 
免疫原	Synthetic peptide within Human Prostaglandin E Receptor EP1/PTGER1 aa 350 to the C-terminus. The exact immunogen sequence used to generate this antibody is proprietary information. If additional detail on the immunogen is needed to determine the suitability of the antibody for your needs, please contact our Scientific Support team to discuss your requirements. Genbank: NP_000946 Database link: P34995 <div style="text-align: right;">  Run BLAST with  Run BLAST with </div>
ポジティブ・コントロール	293T cell lysate, Human lymphoma tissue lysate.
特記事項	<p>The Life Science industry has been in the grips of a reproducibility crisis for a number of years. Abcam is leading the way in addressing this with our range of recombinant monoclonal antibodies and knockout edited cell lines for gold-standard validation. Please check that this product meets your needs before purchasing.</p> <p>If you have any questions, special requirements or concerns, please send us an inquiry and/or contact our Support team ahead of purchase. Recommended alternatives for this product can be found below, along with publications, customer reviews and Q&As</p>

製品の特性

製品の状態	Liquid
保存方法	Shipped at 4°C. Store at +4°C short term (1-2 weeks). Upon delivery aliquot. Store at -20°C long term. Avoid freeze / thaw cycle.
バッファー	pH: 7.4 Preservative: 0.05% Sodium azide Constituents: 50% Glycerol (glycerin, glycerine), 49% PBS (PBS is without Mg ²⁺ and Ca ²⁺)

精製度	Immunogen affinity purified
ポリクローナル	ポリクローナル
アイソタイプ	IgG

アプリケーション

The Abpromise guarantee **Abpromise保証は、次のテスト済みアプリケーションにおけるab183073の使用に適用されます**
 アプリケーションノートには、推奨の開始希釈率がありますが、適切な希釈率につきましてはご検討ください。

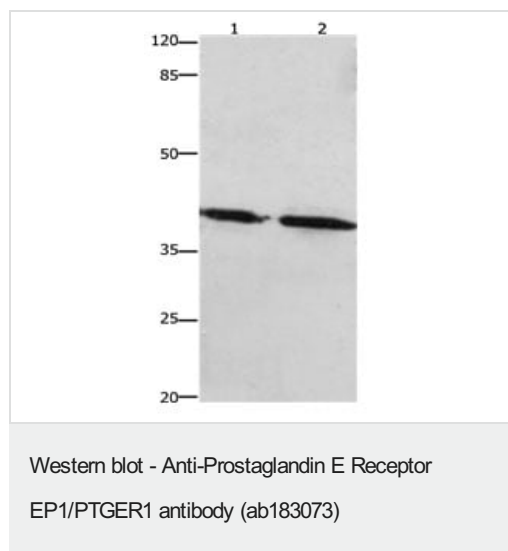
アプリケーション	Abreviews	特記事項
WB	★★★★★ (1)	1/450 - 1/5000. Predicted molecular weight: 42 kDa.

ターゲット情報

関連性 PTGER1 is a subtype 1 receptor for prostaglandin E2 (PGE2). This receptor is coupled to the phosphatidylinositol-calcium second messenger system by G(q) proteins. PTGER1 may be an important modulator of renal function and is implicated in the smooth muscle contractile response to PGE2 in various tissues.

細胞内局在 Cell Membrane; multi-pass membrane protein.

画像



All lanes : Anti-Prostaglandin E Receptor EP1/PTGER1 antibody (ab183073) at 1/450 dilution

Lane 1 : Human lymphoma tissue lysate

Lane 2 : 293T cell lysate

Lysates/proteins at 40 µg per lane.

Secondary

All lanes : Goat anti Rabbit IgG - H&L (HRP) at 1/10000 dilution

Developed using the ECL technique.

Predicted band size: 42 kDa

Exposure time: 1 minute

10%SDS-PAGE

Please note: All products are "FOR RESEARCH USE ONLY. NOT FOR USE IN DIAGNOSTIC PROCEDURES"

Our Abpromise to you: Quality guaranteed and expert technical support

- Replacement or refund for products not performing as stated on the datasheet
- Valid for 12 months from date of delivery
- Response to your inquiry within 24 hours
- We provide support in Chinese, English, French, German, Japanese and Spanish
- Extensive multi-media technical resources to help you
- We investigate all quality concerns to ensure our products perform to the highest standards

If the product does not perform as described on this datasheet, we will offer a refund or replacement. For full details of the Abpromise, please visit <https://www.abcam.co.jp/abpromise> or contact our technical team.

Terms and conditions

- Guarantee only valid for products bought direct from Abcam or one of our authorized distributors