

# Anti-Prolyl Endopeptidase antibody ab58988

★★★★★ [1 Abreviews](#) [18 References](#) [画像数 1](#)

### 製品の概要

製品名	Anti-Prolyl Endopeptidase antibody
製品の詳細	Rabbit polyclonal to Prolyl Endopeptidase
由来種	Rabbit
特異性	ab58988 does not recognize other Prolyl Endopeptidase family members.
アプリケーション	<b>適用あり:</b> WB
種交差性	<b>交差種:</b> Dog
免疫原	Synthetic peptide based on the amino terminal end of human Prolyl Endopeptidase. (Peptide available as <a href="#">ab63973</a> .) Immunizing peptide available on request, please contact a customer service representative to ask for availability.
特記事項	<p>The Life Science industry has been in the grips of a reproducibility crisis for a number of years. Abcam is leading the way in addressing this with our range of recombinant monoclonal antibodies and knockout edited cell lines for gold-standard validation. Please check that this product meets your needs before purchasing.</p> <p>If you have any questions, special requirements or concerns, please send us an inquiry and/or contact our Support team ahead of purchase. Recommended alternatives for this product can be found below, along with publications, customer reviews and Q&amp;As</p>

### 製品の特性

製品の状態	Liquid
保存方法	Shipped at 4°C. Store at -20°C. Stable for 12 months at -20°C.
バッファー	<p>pH: 7.40</p> <p>Preservative: 0.05% Sodium azide</p> <p>Constituents: PBS, 50% Glycerol, 2.9% Sodium chloride</p>
精製度	Immunogen affinity purified
ポリ/モノ	ポリクローナル
アイソタイプ	IgG

### アプリケーション

## The Abpromise guarantee

**Abpromise保証は、次のテスト済みアプリケーションにおけるab58988の使用に適用されます**

アプリケーションノートには、推奨の開始希釈率がありますが、適切な希釈率につきましてはご検討ください。

アプリケーション	Abreviews	特記事項
WB		

### 追加情報

WB: 1/1000 - 1/5000 dependent on substrate. Predicted molecular weight: 81 kDa.

A recommended starting concentration for Western blots is 1:1,000 when using colorimetric substrates such as BCIP/NBT, and 1:5,000 for chemiluminescent substrates.

EDTA/EGTA treatment of tissues or lysates is required to see latent zymogen.

Not yet tested in other applications.

Optimal dilutions/concentrations should be determined by the end user.

### ターゲット情報

#### 機能

Cleaves peptide bonds on the C-terminal side of prolyl residues within peptides that are up to approximately 30 amino acids long.

#### 配列類似性

Belongs to the peptidase S9A family.

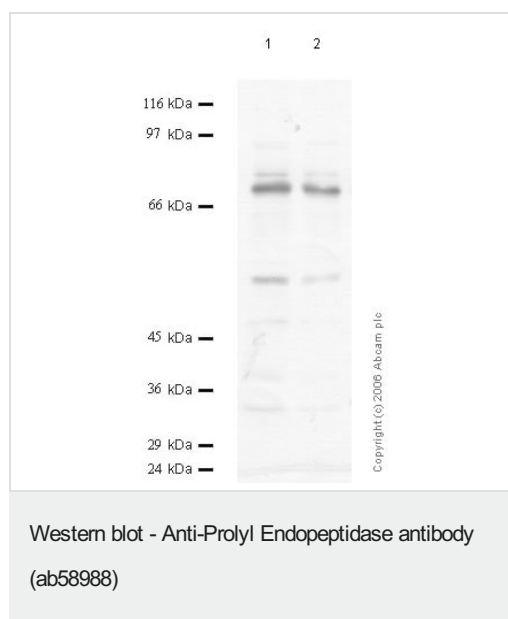
#### 翻訳後修飾

The N-terminus is blocked.

#### 細胞内局在

Cytoplasm.

### 画像



**All lanes :** Anti-Prolyl Endopeptidase antibody (ab58988) at 1/1000 dilution

**Lane 1 :** Madin Darby canine kidney (MDCK) cell lysate at 10  $\mu$ l

**Lane 2 :** Madin Darby canine kidney (MDCK) cell lysate at 5  $\mu$ l

**Predicted band size:** 81 kDa

**Please note:** All products are "FOR RESEARCH USE ONLY. NOT FOR USE IN DIAGNOSTIC PROCEDURES"

### **Our Abpromise to you: Quality guaranteed and expert technical support**

---

- Replacement or refund for products not performing as stated on the datasheet
- Valid for 12 months from date of delivery
- Response to your inquiry within 24 hours
  
- We provide support in Chinese, English, French, German, Japanese and Spanish
- Extensive multi-media technical resources to help you
- We investigate all quality concerns to ensure our products perform to the highest standards

If the product does not perform as described on this datasheet, we will offer a refund or replacement. For full details of the Abpromise, please visit <https://www.abcam.co.jp/abpromise> or contact our technical team.

### **Terms and conditions**

---

- Guarantee only valid for products bought direct from Abcam or one of our authorized distributors