

### Anti-Prolactin/PRL antibody [EPR3216] ab92489

リコンビナント RabMAb

画像数 2

#### 製品の概要

製品名	Anti-Prolactin/PRL antibody [EPR3216]
製品の詳細	Rabbit monoclonal [EPR3216] to Prolactin/PRL
由来種	Rabbit
アプリケーション	<b>適用あり:</b> WB <b>適用なし:</b> ICC/IF, IHC-P or IP
種交差性	<b>交差種:</b> Human
免疫原	Synthetic peptide. This information is proprietary to Abcam and/or its suppliers.
ポジティブ・コントロール	Prolactin/PRL recombinant protein and fetal pituitary lysates
特記事項	<p>This product is a recombinant monoclonal antibody, which offers several advantages including:</p> <ul style="list-style-type: none"> <li>- High batch-to-batch consistency and reproducibility</li> <li>- Improved sensitivity and specificity</li> <li>- Long-term security of supply</li> <li>- Animal-free production</li> </ul> <p>For more information <a href="#">see here</a>.</p> <p>Our RabMAb<sup>®</sup> technology is a patented hybridoma-based technology for making rabbit monoclonal antibodies. For details on our patents, please refer to <a href="#">RabMAb<sup>®</sup> patents</a>.</p> <p>Mouse, Rat: We have preliminary internal testing data to indicate this antibody may not react with these species. Please contact us for more information.</p>

#### 製品の特性

製品の状態	Liquid
保存方法	Shipped at 4°C. Store at -20°C. Stable for 12 months at -20°C.
バッファー	<p>pH: 7.20</p> <p>Preservative: 0.01% Sodium azide</p> <p>Constituents: 9% PBS, 40% Glycerol (glycerin, glycerine), 0.05% BSA, 50% Tissue culture supernatant</p>
精製度	Tissue culture supernatant
ポリ/モノ	モノクローナル

クローン名 EPR3216  
アイソタイプ IgG

## アプリケーション

**The Abpromise guarantee** **Abpromise保証は、** 次のテスト済みアプリケーションにおけるab92489の使用に適用されます  
アプリケーションノートには、推奨の開始希釈率がありますが、適切な希釈率につきましてはご検討ください。

アプリケーション	Abreviews	特記事項
WB		1/20000 - 1/100000. Predicted molecular weight: 26 kDa.

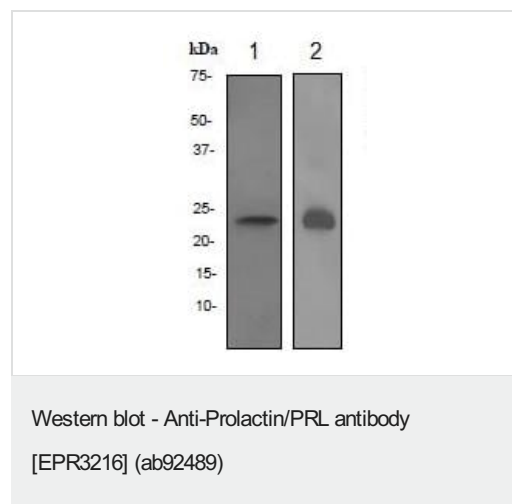
**追加情報** Is unsuitable for ICC/IF, IHC-P or IP.

## ターゲット情報

**関連性** Various hormones are secreted from the anterior pituitary during development and growth.  
Prolactin is a growth factor secreted by the anterior pituitary that is necessary for the proliferation and differentiation of the mammary glands.

**細胞内局在** Secreted

## 画像



**All lanes :** Anti-Prolactin/PRL antibody [EPR3216] (ab92489) at 1/50000 dilution

**Lane 1 :** Prolactin/PRL recombinant protein

**Lane 2 :** Human fetal pituitary lysate

Lysates/proteins at 10 µg per lane.

### Secondary

**All lanes :** HRP labelled goat anti-rabbit IgG at 1/2000 dilution

**Predicted band size:** 26 kDa

### Why choose a recombinant antibody?



**Research with confidence**  
Consistent and reproducible results



**Long-term and scalable supply**  
Recombinant technology



**Success from the first experiment**  
Confirmed specificity



**Ethical standards compliant**  
Animal-free production

Anti-Prolactin/PRL antibody [EPR3216] (ab92489)

**Please note:** All products are "FOR RESEARCH USE ONLY. NOT FOR USE IN DIAGNOSTIC PROCEDURES"

### Our Abpromise to you: Quality guaranteed and expert technical support

---

- Replacement or refund for products not performing as stated on the datasheet
- Valid for 12 months from date of delivery
- Response to your inquiry within 24 hours
- We provide support in Chinese, English, French, German, Japanese and Spanish
- Extensive multi-media technical resources to help you
- We investigate all quality concerns to ensure our products perform to the highest standards

If the product does not perform as described on this datasheet, we will offer a refund or replacement. For full details of the Abpromise, please visit <https://www.abcam.co.jp/abpromise> or contact our technical team.

### Terms and conditions

---

- Guarantee only valid for products bought direct from Abcam or one of our authorized distributors