

Anti-Prolactin/PRL antibody [EP3215] ab110642

RabMAb

2 References 画像数 1

製品の概要

製品名	Anti-Prolactin/PRL antibody [EP3215]
製品の詳細	Rabbit monoclonal [EP3215] to Prolactin/PRL
由来種	Rabbit
アプリケーション	適用あり: WB 適用なし: Flow Cyt, IHC-P or IP
種交差性	交差種: Human
免疫原	Synthetic peptide. This information is proprietary to Abcam and/or its suppliers.
ポジティブ・コントロール	WB : Human fetal pituitary tissue lysate.
特記事項	<p>Our RabMAb[®] technology is a patented hybridoma-based technology for making rabbit monoclonal antibodies. For details on our patents, please refer to RabMAb[®] patents.</p> <p>The Life Science industry has been in the grips of a reproducibility crisis for a number of years. Abcam is leading the way in addressing this with our range of recombinant monoclonal antibodies and knockout edited cell lines for gold-standard validation. Please check that this product meets your needs before purchasing.</p> <p>If you have any questions, special requirements or concerns, please send us an inquiry and/or contact our Support team ahead of purchase. Recommended alternatives for this product can be found below, along with publications, customer reviews and Q&As</p> <p>Mouse, Rat: We have preliminary internal testing data to indicate this antibody may not react with these species. Please contact us for more information.</p>

製品の特性

製品の状態	Liquid
保存方法	Shipped at 4°C. Store at -20°C. Stable for 12 months at -20°C.
バッファー	pH: 7.20 Preservative: 0.01% Sodium azide Constituents: 9% PBS, 40% Glycerol (glycerin, glycerine), 0.05% BSA, 50% Tissue culture supernatant
精製度	Tissue culture supernatant

ポリ/モノ	モノクローナル
クローン名	EP3215
アイソタイプ	IgG

アプリケーション

The Abpromise guarantee Abpromise保証は、 次のテスト済みアプリケーションにおけるab110642の使用に適用されます
アプリケーションノートには、推奨の開始希釈率がありますが、適切な希釈率につきましてはご確認ください。

アプリケーション	Abreviews	特記事項
WB		1/1000 - 1/10000. Detects a band of approximately 23 kDa (predicted molecular weight: 26 kDa).

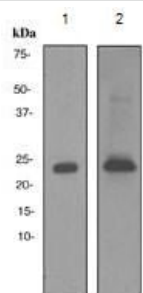
追加情報 Is unsuitable for Flow Cyt, IHC-P or IP.

ターゲット情報

関連性 Various hormones are secreted from the anterior pituitary during development and growth. Prolactin is a growth factor secreted by the anterior pituitary that is necessary for the proliferation and differentiation of the mammary glands.

細胞内局在	Secreted
-------	----------

画像



Western blot - Anti-Prolactin/PRL antibody [EP3215]
(ab110642)

All lanes : Anti-Prolactin/PRL antibody [EP3215] (ab110642) at 1/1000 dilution

Lane 1 : Prolactin recombinant protein at 0.01 μ g

Lane 2 : Human fetal pituitary lysate at 10 μ g

Secondary

All lanes : Goat anti-rabbit HRP conjugated antibody at 1/2000 dilution

Predicted band size: 26 kDa

Observed band size: 23 kDa

Please note: All products are "FOR RESEARCH USE ONLY. NOT FOR USE IN DIAGNOSTIC PROCEDURES"

Our Abpromise to you: Quality guaranteed and expert technical support

- Replacement or refund for products not performing as stated on the datasheet.

- Valid for 12 months from date of delivery
- Response to your inquiry within 24 hours
- We provide support in Chinese, English, French, German, Japanese and Spanish
- Extensive multi-media technical resources to help you
- We investigate all quality concerns to ensure our products perform to the highest standards

If the product does not perform as described on this datasheet, we will offer a refund or replacement. For full details of the Abpromise, please visit <https://www.abcam.co.jp/abpromise> or contact our technical team.

Terms and conditions

- Guarantee only valid for products bought direct from Abcam or one of our authorized distributors