

Anti-Prolactin/PRL antibody ab103617

画像数 3

製品の概要

| | |
|--------------|---|
| 製品名 | Anti-Prolactin/PRL antibody |
| 製品の詳細 | Rabbit polyclonal to Prolactin/PRL |
| 由来種 | Rabbit |
| アプリケーション | 適用あり: WB |
| 種交差性 | 交差種: Mouse, Human |
| 免疫原 | Recombinant full length protein within Human Prolactin/PRL aa 1-250. The exact immunogen sequence used to generate this antibody is proprietary information. If additional detail on the immunogen is needed to determine the suitability of the antibody for your needs, please <u>contact</u> our Scientific Support team to discuss your requirements. |
| ポジティブ・コントロール | Mouse testis tissue lysate, Prolactin/PRL transfected 293T cell line lysate. |
| 特記事項 | <p>The Life Science industry has been in the grips of a reproducibility crisis for a number of years. Abcam is leading the way in addressing this with our range of recombinant monoclonal antibodies and knockout edited cell lines for gold-standard validation. Please check that this product meets your needs before purchasing.</p> <p>If you have any questions, special requirements or concerns, please send us an inquiry and/or contact our Support team ahead of purchase. Recommended alternatives for this product can be found below, along with publications, customer reviews and Q&As</p> |

製品の特性

| | |
|--------|--|
| 製品の状態 | Liquid |
| 保存方法 | Shipped at 4°C. Upon delivery aliquot. Store at -20°C or -80°C. Avoid freeze / thaw cycle. |
| バッファー | pH: 7.40 Constituent: 100% PBS |
| 精製度 | Protein A purified |
| ポリ/モノ | ポリクローナル |
| アイソタイプ | IgG |

アプリケーション

The Abpromise guarantee

Abpromise保証は、次のテスト済みアプリケーションにおけるab103617の使用に適用されます

アプリケーションノートには、推奨の開始希釈率がありますが、適切な希釈率につきましてはご確認ください。

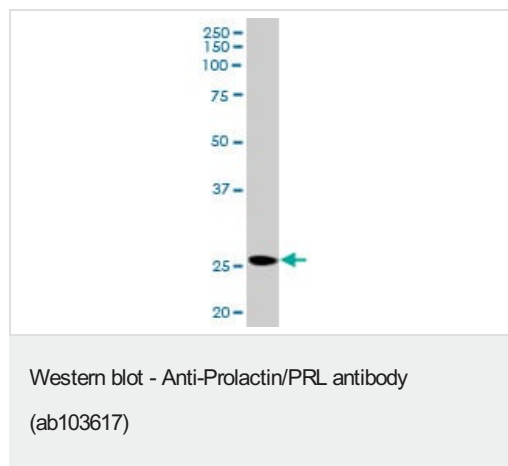
| アプリケーション | Abreviews | 特記事項 |
|----------|-----------|---|
| WB | | 1/500 - 1/1000. Predicted molecular weight: 26 kDa. |

ターゲット情報

関連性 Various hormones are secreted from the anterior pituitary during development and growth. Prolactin is a growth factor secreted by the anterior pituitary that is necessary for the proliferation and differentiation of the mammary glands.

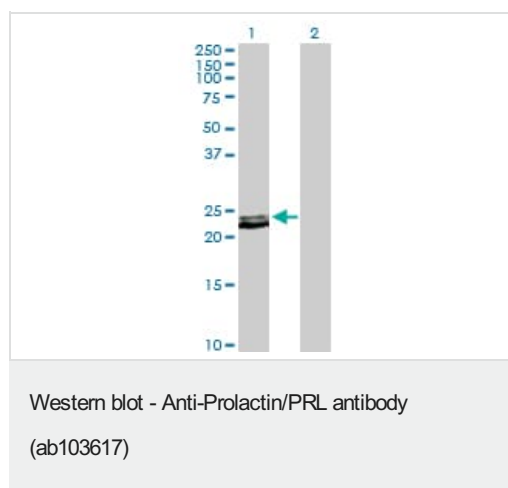
細胞内局在 Secreted

画像



Anti-Prolactin/PRL antibody (ab103617) at 1/500 dilution + Mouse testis tissue lysate at 50 µg

Predicted band size: 26 kDa



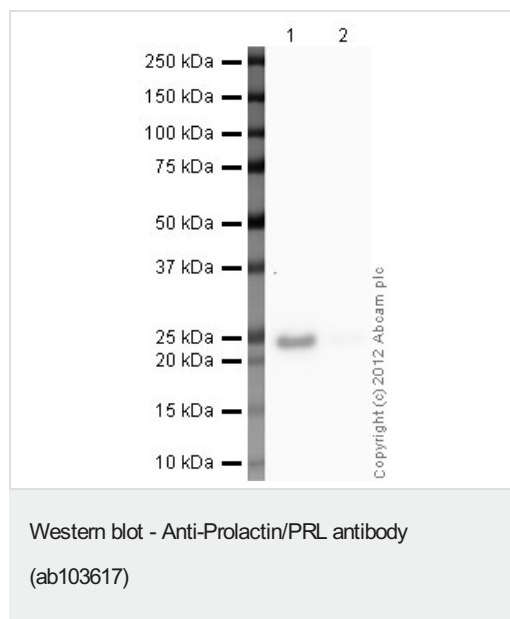
All lanes : Anti-Prolactin/PRL antibody (ab103617) at 1/500 dilution

Lane 1 : Prolactin/PRL transfected 293T cell lysate

Lane 2 : Non-transfected 293T cell lysate

Lysates/proteins at 25 µg per lane.

Predicted band size: 26 kDa



Anti-Prolactin/PRL antibody (ab103617) at 1/500 dilution +
Recombinant human Prolactin/PRL protein (**ab51703**) at 0.1 µg

Secondary

Goat Anti-Rabbit IgG H&L (HRP) preadsorbed (**ab97080**) at
1/5000 dilution

Developed using the ECL technique.

Performed under reducing conditions.

Predicted band size: 26 kDa

Exposure time: 90 seconds

Please note: All products are "FOR RESEARCH USE ONLY. NOT FOR USE IN DIAGNOSTIC PROCEDURES"

Our Abpromise to you: Quality guaranteed and expert technical support

- Replacement or refund for products not performing as stated on the datasheet
- Valid for 12 months from date of delivery
- Response to your inquiry within 24 hours
- We provide support in Chinese, English, French, German, Japanese and Spanish
- Extensive multi-media technical resources to help you
- We investigate all quality concerns to ensure our products perform to the highest standards

If the product does not perform as described on this datasheet, we will offer a refund or replacement. For full details of the Abpromise, please visit <https://www.abcam.co.jp/abpromise> or contact our technical team.

Terms and conditions

- Guarantee only valid for products bought direct from Abcam or one of our authorized distributors