

Anti-Progesterone Receptor antibody [Alpha PR6] ab2765

★★★★★ 6 Abreviews 33 References 画像数 4

製品の概要

製品名	Anti-Progesterone Receptor antibody [Alpha PR6]
製品の詳細	Mouse monoclonal [Alpha PR6] to Progesterone Receptor
由来種	Mouse
特異性	Detects the B form of the progesterone receptor (PR). This antibody does not cross-react with estrogen receptor or glucocorticoid receptor.
アプリケーション	適用あり: IHC-P, WB, Flow Cyt, ICC/IF
種交差性	交差種: Human
免疫原	Full length protein corresponding to Chicken Progesterone Receptor. Progesterone receptor purified from chick oviduct cytosol.
特記事項	<p>The Life Science industry has been in the grips of a reproducibility crisis for a number of years. Abcam is leading the way in addressing this with our range of recombinant monoclonal antibodies and knockout edited cell lines for gold-standard validation. Please check that this product meets your needs before purchasing.</p> <p>If you have any questions, special requirements or concerns, please send us an inquiry and/or contact our Support team ahead of purchase. Recommended alternatives for this product can be found below, along with publications, customer reviews and Q&As</p>

製品の特性

製品の状態	Liquid
保存方法	Shipped at 4°C. Store at +4°C short term (1-2 weeks). Upon delivery aliquot. Store at -20°C or -80°C. Avoid freeze / thaw cycle.
バッファー	Preservative: 0.05% Sodium azide Constituent: PBS
精製度	Protein G purified
ポリ/モノ	モノクローナル
クローン名	Alpha PR6
アイソタイプ	IgG2a

アプリケーション

The Abpromise guarantee

Abpromise保証は、次のテスト済みアプリケーションにおけるab2765の使用に適用されます

アプリケーションノートには、推奨の開始希釈率がありますが、適切な希釈率につきましてはご検討ください。

アプリケーション	Abreviews	特記事項
IHC-P	★★★★★ (5)	Use a concentration of 5 µg/ml.
WB		Use a concentration of 1 µg/ml. Predicted molecular weight: 99 kDa.
Flow Cyt		Use 0.5µg for 10 ⁶ cells. ab170191 - Mouse monoclonal IgG2a, is suitable for use as an isotype control with this antibody.
ICC/IF	★★★★★ (1)	Use at an assay dependent concentration.

ターゲット情報

機能

The steroid hormones and their receptors are involved in the regulation of eukaryotic gene expression and affect cellular proliferation and differentiation in target tissues. Progesterone receptor isoform B (PRB) is involved activation of c-SRC/MAPK signaling on hormone stimulation.

Isoform A: inactive in stimulating c-Src/MAPK signaling on hormone stimulation.

Isoform 4: Increases mitochondrial membrane potential and cellular respiration upon stimulation by progesterone.

配列類似性

Belongs to the nuclear hormone receptor family. NR3 subfamily.

Contains 1 nuclear receptor DNA-binding domain.

ドメイン

Composed of three domains: a modulating N-terminal domain, a DNA-binding domain and a C-terminal ligand-binding domain.

翻訳後修飾

Phosphorylated on multiple serine sites. Several of these sites are hormone-dependent.

Phosphorylation on Ser-294 occurs preferentially on isoform B, is highly hormone-dependent and modulates ubiquitination and sumoylation on Lys-388. Phosphorylation on Ser-102 and Ser-345 also requires induction by hormone. Basal phosphorylation on Ser-81, Ser-162, Ser-190 and Ser-400 is increased in response to progesterone and can be phosphorylated in vitro by the CDK2-A1 complex. Increased levels of phosphorylation on Ser-400 also in the presence of EGF, heregulin, IGF, PMA and FBS. Phosphorylation at this site by CDK2 is ligand-independent, and increases nuclear translocation and transcriptional activity. Phosphorylation at Ser-162 and Ser-294, but not at Ser-190, is impaired during the G(2)/M phase of the cell cycle. Phosphorylation on Ser-345 by ERK1/2 MAPK is required for interaction with SP1.

Sumoylation is hormone-dependent and represses transcriptional activity. Sumoylation on all three sites is enhanced by PIAS3. Desumoylated by SENP1. Sumoylation on Lys-388, the main site of sumoylation, is repressed by ubiquitination on the same site, and modulated by phosphorylation at Ser-294.

Ubiquitination is hormone-dependent and represses sumoylation on the same site. Promoted by MAPK-mediated phosphorylation on Ser-294.

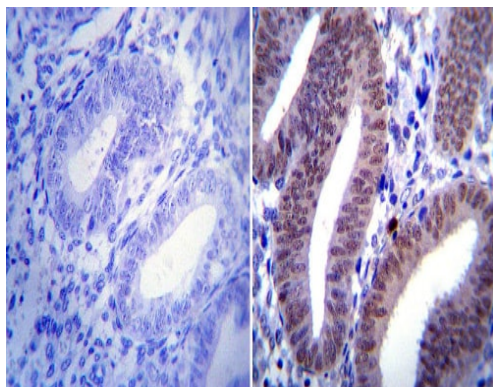
Palmitoylated by ZDHHC7 and ZDHHC21. Palmitoylation is required for plasma membrane targeting and for rapid intracellular signaling via ERK and AKT kinases and cAMP generation.

細胞内局在

Nucleus. Cytoplasm. Nucleoplasmic shuttling is both hormone- and cell cycle-dependent. On

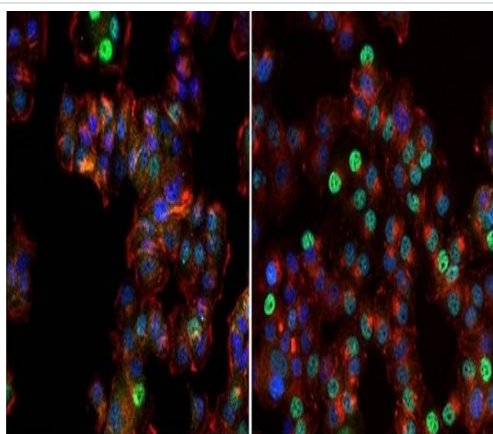
hormone stimulation, retained in the cytoplasm in the G(1) and G(2)/M phases; Mitochondrion outer membrane and Nucleus. Cytoplasm. Mainly nuclear.

画像



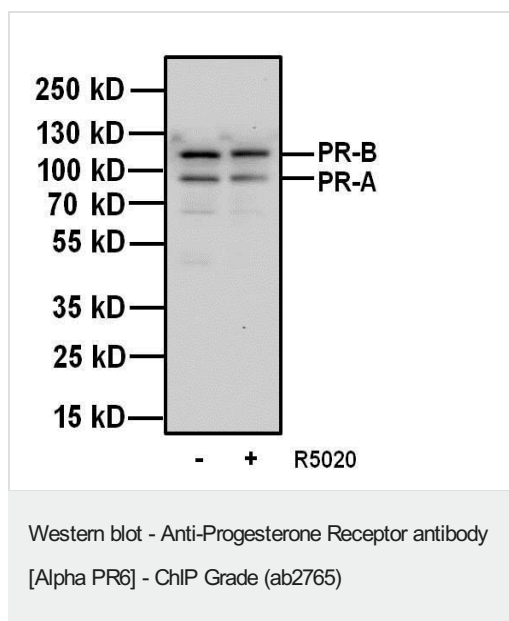
Immunohistochemistry (Formalin/PFA-fixed paraffin-embedded sections) - Anti-Progesterone Receptor antibody [Alpha PR6] (ab2765)

Immunohistochemistry (Formalin/PFA-fixed paraffin-embedded sections) was performed on human uterus tissue. Antigen retrieval was performed using 10mM sodium citrate followed by microwave treatment for 8-15 minutes. Endogenous peroxidases were blocked in 3% H2O2-methanol for 15 minutes and tissues were blocked in 3% BSA-PBS for 30 minutes at room temperature. Cells were incubated with ab2765 (1:20) overnight in a humidified chamber. Tissues were washed in PBST and detection was performed using a secondary antibody conjugated to HRP. DAB staining buffer was applied and tissues were counterstained with hematoxylin and prepped for mounting. Images were taken at 40X magnification.



Immunocytochemistry/ Immunofluorescence - Anti-Progesterone Receptor antibody [Alpha PR6] - ChIP Grade (ab2765)

Immunocytochemistry/ Immunofluorescence analysis of T47D cells untreated (left) or stimulated with 100nm promegestone for 1 hour (right), labeling Progesterone Receptor with ab2765 (green). The cells were fixed with formalin for 15 minutes, permeabilized with 0.1% Triton X-100 in TBS for 10 minutes, and blocked with 3% Blocker BSA for 15 minutes at room temperature. Cells were stained with Anti-Progesterone Receptor antibody [Alpha PR6] - ChIP Grade (ab2765) at a dilution of 1/100 for 1 hour at 37C, and then incubated with a Alexa Fluor 488 goat anti-mouse IgG secondary antibody at a dilution of 1/1000 for 30 minutes at room temperature (both panels, green). Nuclei (both panels, blue) were stained with Hoechst 33342 dye.



All lanes : Anti-Progesterone Receptor antibody [Alpha PR6] (ab2765) at 1 µg/ml

Lane 1 : T47D cell lysate untreated (-)

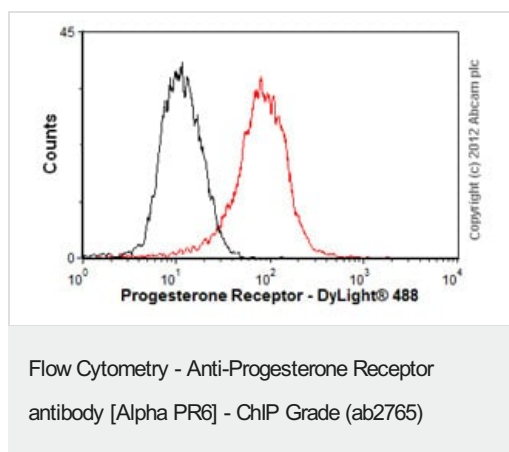
Lane 2 : T47D cell lysate stimulated (+) with 100 nm promegestone for 1 hour

Lysates/proteins at 20 µg per lane.

Secondary

All lanes : Goat anti-Mouse IgG-HRP at 1/2000 dilution

Predicted band size: 99 kDa



Overlay histogram showing T47D cells stained with ab2765 (red line). The cells were fixed with 80% methanol (5 min) and then permeabilized with 0.1% PBS-Tween for 20 min. The cells were then incubated in 1x PBS / 10% normal goat serum / 0.3M glycine to block non-specific protein-protein interactions followed by the antibody (ab2765, 0.5µg/1x10⁶ cells) for 30 min at 22°C. The secondary antibody used was DyLight® 488 goat anti-mouse IgG (H+L) ([ab96879](#)) at 1/500 dilution for 30 min at 22°C. Isotype control antibody (black line) was mouse IgG2a [ICIGG2A] ([ab91361](#), 2µg/1x10⁶ cells) used under the same conditions.

Acquisition of >5,000 events was performed.

Please note: All products are "FOR RESEARCH USE ONLY. NOT FOR USE IN DIAGNOSTIC PROCEDURES"

Our Promise to you: Quality guaranteed and expert technical support

- Replacement or refund for products not performing as stated on the datasheet
- Valid for 12 months from date of delivery

- Response to your inquiry within 24 hours
- We provide support in Chinese, English, French, German, Japanese and Spanish
- Extensive multi-media technical resources to help you
- We investigate all quality concerns to ensure our products perform to the highest standards

If the product does not perform as described on this datasheet, we will offer a refund or replacement. For full details of the Abpromise, please visit <https://www.abcam.co.jp/abpromise> or contact our technical team.

Terms and conditions

- Guarantee only valid for products bought direct from Abcam or one of our authorized distributors