



Anti-Profilin 1 antibody - Carboxyterminal end ab50667

★★★★★ [4 Abreviews](#) [13 References](#) [画像数 1](#)

製品の概要

製品名	Anti-Profilin 1 antibody - Carboxyterminal end
製品の詳細	Rabbit polyclonal to Profilin 1 - Carboxyterminal end
由来種	Rabbit
アプリケーション	適用あり: IP
種交差性	交差種: Mouse
免疫原	Synthetic peptide: CYEMASHLRRSQY conjugated to KLH, corresponding to C terminal amino acids 128-140 of Human Profilin 1  Run BLAST with  Run BLAST with

特記事項

The Life Science industry has been in the grips of a reproducibility crisis for a number of years. Abcam is leading the way in addressing this with our range of recombinant monoclonal antibodies and knockout edited cell lines for gold-standard validation. Please check that this product meets your needs before purchasing.

If you have any questions, special requirements or concerns, please send us an inquiry and/or contact our Support team ahead of purchase. Recommended alternatives for this product can be found below, along with publications, customer reviews and Q&As

製品の特性

製品の状態	Liquid
保存方法	Shipped at 4°C. Store at +4°C short term (1-2 weeks). Upon delivery aliquot. Store at -20°C or -80°C. Avoid freeze / thaw cycle.
バッファー	pH: 7.40 Preservative: 0.097% Sodium azide Constituent: 0.0268% PBS
精製度	Immunogen affinity purified
ポリ/モノ	ポリクローナル
アイソタイプ	IgG

アプリケーション

The Abpromise guarantee

Abpromise保証は、次のテスト済みアプリケーションにおけるab50667の使用に適用されます

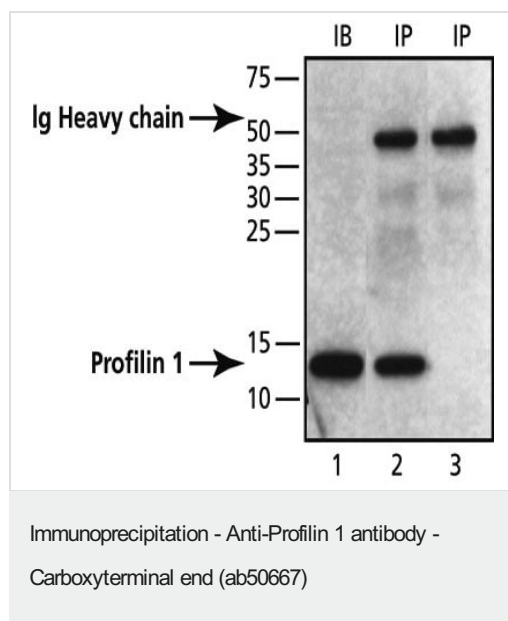
アプリケーションノートには、推奨の開始希釈率がありますが、適切な希釈率につきましてはご検討ください。

アプリケーション	Abreviews	特記事項
IP		Use at an assay dependent concentration.

ターゲット情報

機能	Binds to actin and affects the structure of the cytoskeleton. At high concentrations, profilin prevents the polymerization of actin, whereas it enhances it at low concentrations. By binding to PIP2, it inhibits the formation of IP3 and DG.
配列類似性	Belongs to the profilin family.
細胞内局在	Cytoplasm > cytoskeleton.

画像



Lane 1: Positive control — Western blot: ab50667 at a concentration of 1 µg/ml on whole extract of Mouse 3T3 cells at 10 µg/ml.

Lane 2: Immunoprecipitation — 10 µg of ab50667 was used to immunoprecipitate Mouse Profilin 1 from 3T3 cell lysate (20 µg/ml).
Detection antibody: Rabbit Anti-Profilin 1 (N-terminal) antibody.

Lane 3: Negative control — non-relevant antibody was used for IP.
Detection antibody: Rabbit Anti-Profilin 1 (N-terminal) antibody

Please note: All products are "FOR RESEARCH USE ONLY. NOT FOR USE IN DIAGNOSTIC PROCEDURES"

Our Abpromise to you: Quality guaranteed and expert technical support

- Replacement or refund for products not performing as stated on the datasheet
- Valid for 12 months from date of delivery
- Response to your inquiry within 24 hours
- We provide support in Chinese, English, French, German, Japanese and Spanish
- Extensive multi-media technical resources to help you
- We investigate all quality concerns to ensure our products perform to the highest standards

If the product does not perform as described on this datasheet, we will offer a refund or replacement. For full details of the Abpromise, please visit <https://www.abcam.co.jp/abpromise> or contact our technical team.

Terms and conditions

- Guarantee only valid for products bought direct from Abcam or one of our authorized distributors