

Anti-proBNP antibody [5B6] ab13111

4 References [画像数 2](#)

製品の概要

製品名	Anti-proBNP antibody [5B6]
製品の詳細	Mouse monoclonal [5B6] to proBNP
由来種	Mouse
アプリケーション	適用あり: ELISA, WB
種交差性	交差種: Recombinant fragment
免疫原	Synthetic peptide: HPLGSPGSASDL , corresponding to amino acids 1 - 12 of Human proBNP. Run BLAST with Run BLAST with
特記事項	This product has switched from ascites to TCS on 10th June 2020. Immunoglobulin concentrations vary from batch to batch (generally 4-6 mg/ml for this clone). Please contact technical services for the latest information. The Life Science industry has been in the grips of a reproducibility crisis for a number of years. Abcam is leading the way in addressing this with our range of recombinant monoclonal antibodies and knockout edited cell lines for gold-standard validation. Please check that this product meets your needs before purchasing. If you have any questions, special requirements or concerns, please send us an inquiry and/or contact our Support team ahead of purchase. Recommended alternatives for this product can be found below, along with publications, customer reviews and Q&As

製品の特性

製品の状態	Liquid
保存方法	Shipped at 4°C. Upon delivery aliquot and store at -20°C. Avoid freeze / thaw cycles.
バッファー	Preservative: 0.1% Sodium azide
精製度	Protein A purified
ポリ/モノ	モノクローナル
クローン名	5B6

アプリケーション

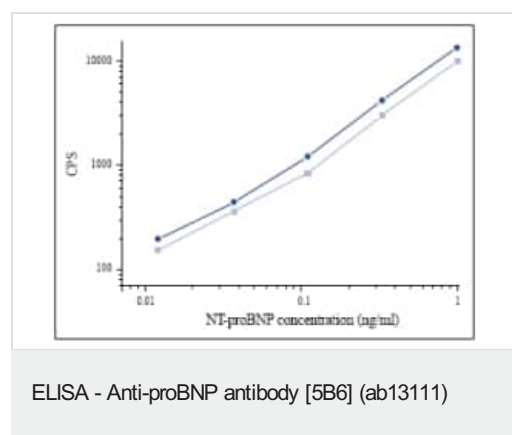
The Abpromise guarantee **Abpromise保証は、**次のテスト済みアプリケーションにおけるab13111の使用に適用されます
アプリケーションノートには、推奨の開始希釈率がありますが、適切な希釈率につきましてはご検討ください。

アプリケーション	Abreviews	特記事項
ELISA		Use at an assay dependent concentration.
WB		Use at an assay dependent concentration. Detects a band of approximately 13 kDa.

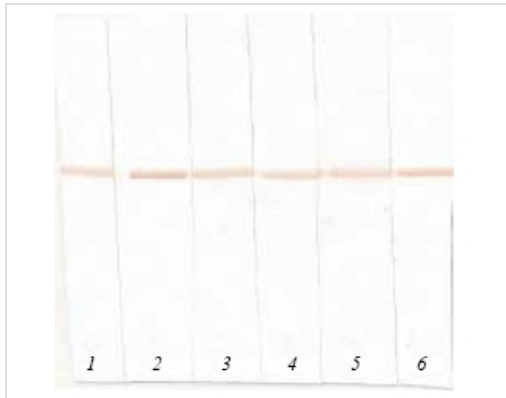
ターゲット情報

機能	Cardiac hormone which may function as a paracrine antifibrotic factor in the heart. Also plays a key role in cardiovascular homeostasis through natriuresis, diuresis, vasorelaxation, and inhibition of renin and aldosterone secretion. Specifically binds and stimulates the cGMP production of the NPR1 receptor. Binds the clearance receptor NPR3.
組織特異性	Brain and also in atria, but at much lower levels than ANP.
配列類似性	Belongs to the natriuretic peptide family.
細胞内局在	Secreted.

画像



NT-proBNP calibration curves using pairs **ab14703** [10H4] and ab13111 [5B6] (grey), and **ab13115** [15F11] and ab13111 [5B6] (black), (capture: 2 µg/well, detection: Eu-labeled 5B6; 200 ng/well). Antigen was recombinant NT-proBNP. Incubated 1 hr at room temperature



Western blot - Anti-proBNP antibody [5B6]
(ab13111)

WB detecting proBNP showing comparable detection from a range of antibodies available. Lane 1 - ab13111 [5B6], lane 2 - **ab13115** [15F11], lane 3 - **ab13059** [11D1], lane 4 - **ab13124** [15D7], lane 5 - **ab13122** [13C1], lane 6 **ab13123** [24E11]. WB detecting proBNP showing comparable detection from a range of antibodies available. Lane 1 - ab13111 [5B6], lane 2 - **ab13115** [15F11], lane 3 - **ab13059** [11D1], lane 4 - **ab13124** [15D7], lane 5 - **ab13122** [13C1], lane 6 **ab13123** [24E11].

Please note: All products are "FOR RESEARCH USE ONLY. NOT FOR USE IN DIAGNOSTIC PROCEDURES"

Our Abpromise to you: Quality guaranteed and expert technical support

- Replacement or refund for products not performing as stated on the datasheet
- Valid for 12 months from date of delivery
- Response to your inquiry within 24 hours
- We provide support in Chinese, English, French, German, Japanese and Spanish
- Extensive multi-media technical resources to help you
- We investigate all quality concerns to ensure our products perform to the highest standards

If the product does not perform as described on this datasheet, we will offer a refund or replacement. For full details of the Abpromise, please visit <https://www.abcam.co.jp/abpromise> or contact our technical team.

Terms and conditions

- Guarantee only valid for products bought direct from Abcam or one of our authorized distributors