

Anti-pro Caspase-12 antibody ab8118

5 References [画像数 2](#)

製品の概要

製品名	Anti-pro Caspase-12 antibody
製品の詳細	Rabbit polyclonal to pro Caspase-12
由来種	Rabbit
特異性	The antibody only recognizes the prodomain, not the activated form.
アプリケーション	適用あり: IHC-P, WB
種交差性	交差種: Mouse, Human
免疫原	Synthetic peptide within Mouse pro Caspase-12 aa 1-100 (N terminal). The exact immunogen sequence used to generate this antibody is proprietary information. If additional detail on the immunogen is needed to determine the suitability of the antibody for your needs, please contact our Scientific Support team to discuss your requirements. Database link: O08736

 **[Run BLAST with](#)**

 **[Run BLAST with](#)**

特記事項

The Life Science industry has been in the grips of a reproducibility crisis for a number of years. Abcam is leading the way in addressing this with our range of recombinant monoclonal antibodies and knockout edited cell lines for gold-standard validation. Please check that this product meets your needs before purchasing.

If you have any questions, special requirements or concerns, please send us an inquiry and/or contact our Support team ahead of purchase. Recommended alternatives for this product can be found below, along with publications, customer reviews and Q&As

製品の特性

製品の状態	Liquid
保存方法	Shipped at 4°C. Upon delivery aliquot and store at -20°C or -80°C. Avoid repeated freeze / thaw cycles.
バッファー	pH: 7.2 Preservative: 0.02% Sodium azide
精製度	Affinity purified
ポリ/モノ	ポリクローナル
アイソタイプ	IgG

アプリケーション

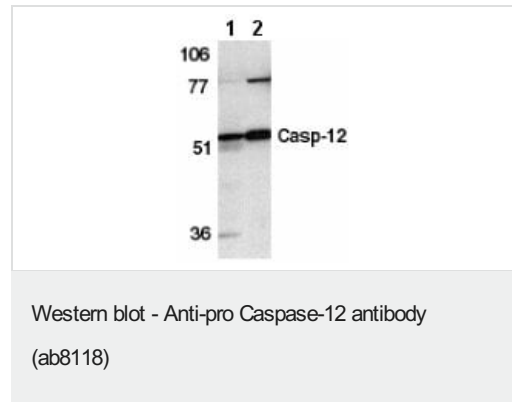
The Abpromise guarantee Abpromise保証は、次のテスト済みアプリケーションにおけるab8118の使用に適用されます
アプリケーションノートには、推奨の開始希釈率がありますが、適切な希釈率につきましてはご検討ください。

アプリケーション	Abreviews	特記事項
IHC-P		Use a concentration of 10 µg/ml.
WB		Use a concentration of 0.5 - 1 µg/ml. Detects a band of approximately 55 kDa.

ターゲット情報

関連性	Caspase 12 is activated by ER stress, including disruption of ER calcium homeostasis and mediates ER stress-induced apoptosis. Caspase 12 is co-localized to the ER with several proteins that are involved in Alzheimers disease including gamma-secretase presenilin and beta-amyloid precursor protein (APP). Caspase 12 mediates cytotoxicity induced by amyloid-beta. It is ubiquitously expressed in mouse tissue.
細胞内局在	Endoplasmic reticulum

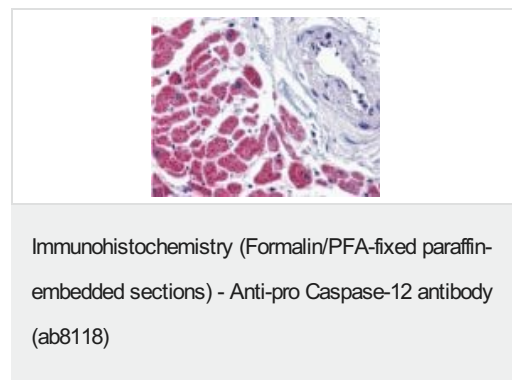
画像



All lanes : Anti-pro Caspase-12 antibody (ab8118) at 1 µg/ml

Lane 1 : Human spleen tissue lysate

Lane 2 : Mouse spleen tissue lysate



ab8118 at 10µg/ml staining Caspase-12 in human heart tissue by IHC

Please note: All products are "FOR RESEARCH USE ONLY. NOT FOR USE IN DIAGNOSTIC PROCEDURES"

Our Abpromise to you: Quality guaranteed and expert technical support

- Replacement or refund for products not performing as stated on the datasheet
- Valid for 12 months from date of delivery
- Response to your inquiry within 24 hours

- We provide support in Chinese, English, French, German, Japanese and Spanish
- Extensive multi-media technical resources to help you
- We investigate all quality concerns to ensure our products perform to the highest standards

If the product does not perform as described on this datasheet, we will offer a refund or replacement. For full details of the Abpromise, please visit <https://www.abcam.co.jp/abpromise> or contact our technical team.

Terms and conditions

- Guarantee only valid for products bought direct from Abcam or one of our authorized distributors