


Anti-PRMT6 antibody ab72205

★★★★☆ [2 Abreviews](#) [1 References](#) [画像数 2](#)

製品の概要

製品名	Anti-PRMT6 antibody
製品の詳細	Rabbit polyclonal to PRMT6
由来種	Rabbit
アプリケーション	適用あり: IHC-P, WB
種交差性	交差種: Human 交差が予測される動物種: Horse, Cow, Dog, Chimpanzee, Rhesus monkey, Gorilla, Chinese hamster, Orangutan, Elephant 
免疫原	Synthetic peptide corresponding to Human PRMT6 (C terminal). A region between residue 325 and the C-terminus (residue 375) of PRMT6 (AAK85733.1). Database link: 55170
ポジティブ・コントロール	Whole cell lysate from 293T cells.
特記事項	<p>The Life Science industry has been in the grips of a reproducibility crisis for a number of years. Abcam is leading the way in addressing this with our range of recombinant monoclonal antibodies and knockout edited cell lines for gold-standard validation. Please check that this product meets your needs before purchasing.</p> <p>If you have any questions, special requirements or concerns, please send us an inquiry and/or contact our Support team ahead of purchase. Recommended alternatives for this product can be found below, along with publications, customer reviews and Q&As</p>

製品の特性

製品の状態	Liquid
保存方法	Shipped at 4°C. Upon delivery aliquot and store at -20°C. Avoid freeze / thaw cycles.
バッファー	pH: 7 Preservative: 0.09% Sodium azide Constituents: 1.815% Tris, 1.764% Sodium citrate, 0.021% PBS
精製度	Immunogen affinity purified
特記事項(精製)	Antibody was affinity purified using an epitope specific to PRMT6 immobilized on solid support.
ポリ/モノ	ポリクローナル
アイソタイプ	IgG

アプリケーション

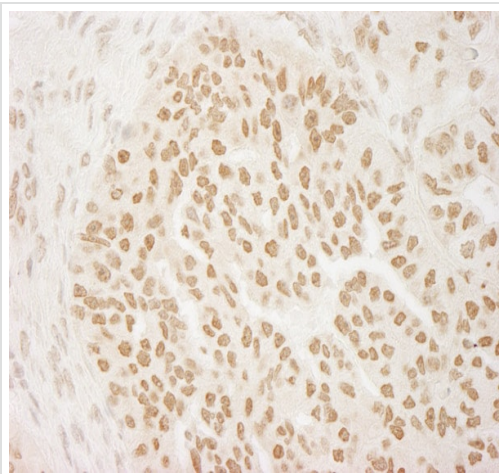
The Abpromise guarantee Abpromise保証は、次のテスト済みアプリケーションにおけるab72205の使用に適用されます
アプリケーションノートには、推奨の開始希釈率がありますが、適切な希釈率につきましてはご検討ください。

アプリケーション	Abreviews	特記事項
IHC-P		1/2000 - 1/10000. Perform heat mediated antigen retrieval with Tris/EDTA buffer pH 9.0 before commencing with IHC staining protocol.
WB	★★★★★ (1)	1/2000 - 1/10000. Predicted molecular weight: 42 kDa.

ターゲット情報

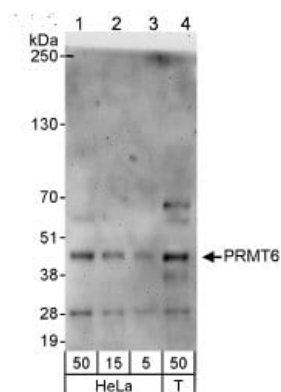
機能	Arginine methyltransferase that can catalyze the formation of both omega-N monomethylarginine (MMA) and asymmetrical dimethylarginine (aDMA), with a strong preference for the formation of aDMA. Preferentially methylates arginyl residues present in a glycine and arginine-rich domain and displays preference for monomethylated substrates. Specifically mediates the asymmetric dimethylation of histone H3 'Arg-2' to form H3R2me2a. H3R2me2a represents a specific tag for epigenetic transcriptional repression and is mutually exclusive with methylation on histone H3 'Lys-4' (H3K4me2 and H3K4me3). Acts as a transcriptional repressor of various genes such as HOXA2, THBS1 and TP53. Repression of TP53 blocks cellular senescence (By similarity). Also methylates histone H2A and H4 'Arg-3' (H2AR3me and H4R3me, respectively). Acts as a regulator of DNA base excision during DNA repair by mediating the methylation of DNA polymerase beta (POLB), leading to the stimulation of its polymerase activity by enhancing DNA binding and processivity. Methylates HMGA1. Regulates alternative splicing events. Acts as a transcriptional coactivator of a number of steroid hormone receptors including ESR1, ESR2, PGR and NR3C1. Promotes fasting-induced transcriptional activation of the gluconeogenic program through methylation of the CRT2 transcription coactivator. May play a role in innate immunity against HIV-1 in case of infection by methylating and impairing the function of various HIV-1 proteins such as Tat, Rev and Nucleocapsid protein p7 (NC).
組織特異性	Highly expressed in kidney and testis.
配列類似性	Belongs to the class I-like SAM-binding methyltransferase superfamily. Protein arginine N-methyltransferase family. PRMT6 subfamily. Contains 1 SAM-dependent MTase PRMT-type domain.
翻訳後修飾	Automethylation enhances its stability and antiretroviral activity.
細胞内局在	Nucleus.

画像



Immunohistochemistry (Formalin/PFA-fixed paraffin-embedded sections) - Anti-PRMT6 antibody (ab72205)

Immunohistochemistry (Formalin/PFA-fixed paraffin-embedded sections) analysis of human breast carcinoma tissue labelling PRMT6 with ab72205 at 1/5000 (0.2 µg/ml). Detection: DAB.



Western blot - Anti-PRMT6 antibody (ab72205)

All lanes : Anti-PRMT6 antibody (ab72205) at 0.04 µg/ml

Lane 1 : HeLa cell lysate at 50 µg

Lane 2 : HeLa cell lysate at 15 µg

Lane 3 : HeLa cell lysate at 5 µg

Lane 4 : 293T cell lysate at 50 µg

Predicted band size: 42 kDa

Please note: All products are "FOR RESEARCH USE ONLY. NOT FOR USE IN DIAGNOSTIC PROCEDURES"

Our Abpromise to you: Quality guaranteed and expert technical support

- Replacement or refund for products not performing as stated on the datasheet
- Valid for 12 months from date of delivery
- Response to your inquiry within 24 hours
- We provide support in Chinese, English, French, German, Japanese and Spanish
- Extensive multi-media technical resources to help you

- We investigate all quality concerns to ensure our products perform to the highest standards

If the product does not perform as described on this datasheet, we will offer a refund or replacement. For full details of the Abpromise, please visit <https://www.abcam.co.jp/abpromise> or contact our technical team.

Terms and conditions

- Guarantee only valid for products bought direct from Abcam or one of our authorized distributors