

Anti-PRL-1 antibody ab121185

2 References [画像数 2](#)

製品の概要

製品名	Anti-PRL-1 antibody
製品の詳細	Rabbit polyclonal to PRL-1
由来種	Rabbit
アプリケーション	適用あり: IHC-P, WB
種交差性	交差種: Human
免疫原	Recombinant fragment corresponding to Human PRL-1 aa 23-156.
ポジティブ・コントロール	Human placenta tissue; Transfected HEK293T cell lysate.
特記事項	<p>The Life Science industry has been in the grips of a reproducibility crisis for a number of years. Abcam is leading the way in addressing this with our range of recombinant monoclonal antibodies and knockout edited cell lines for gold-standard validation. Please check that this product meets your needs before purchasing.</p> <p>If you have any questions, special requirements or concerns, please send us an inquiry and/or contact our Support team ahead of purchase. Recommended alternatives for this product can be found below, along with publications, customer reviews and Q&As</p>

製品の特性

製品の状態	Liquid
保存方法	Shipped at 4°C. Upon delivery aliquot and store at -20°C. Avoid freeze / thaw cycles.
バッファー	<p>pH: 7.20</p> <p>Preservative: 0.02% Sodium azide</p> <p>Constituents: 59% PBS, 40% Glycerol (glycerin, glycerine)</p>
精製度	Immunogen affinity purified
ポリ/モノ	ポリクローナル
アイソタイプ	IgG

アプリケーション

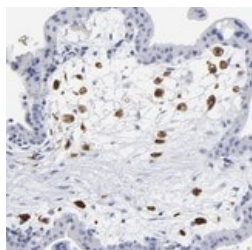
The Abpromise guarantee **Abpromise保証は、次のテスト済みアプリケーションにおけるab121185の使用に適用されます**
 アプリケーションノートには、推奨の開始希釈率がありますが、適切な希釈率につきましてはご検討ください。

アプリケーション	Abreviews	特記事項
IHC-P		1/200 - 1/500. Perform heat mediated antigen retrieval with citrate buffer pH 6 before commencing with IHC staining protocol.
WB		1/250 - 1/500.

ターゲット情報

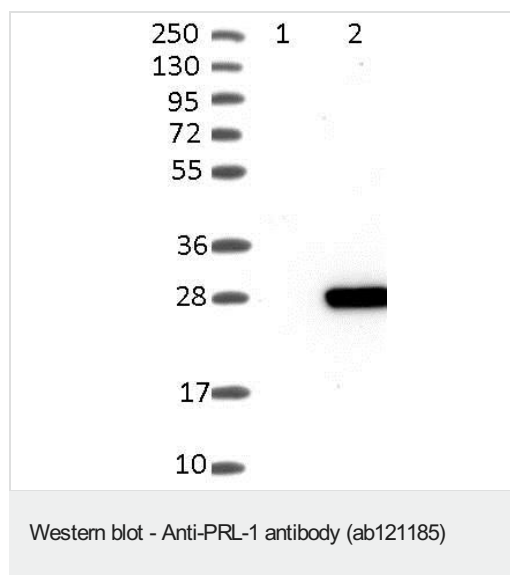
機能	Protein tyrosine phosphatase which stimulates progression from G1 into S phase during mitosis. May play a role in the development and maintenance of differentiating epithelial tissues. Enhances cell proliferation, cell motility and invasive activity, and promotes cancer metastasis.
組織特異性	Expressed in bone marrow, lymph nodes, T lymphocytes, spleen, thymus and tonsil. Overexpressed in tumor cell lines.
配列類似性	Belongs to the protein-tyrosine phosphatase family. Contains 1 tyrosine-protein phosphatase domain.
発生段階	Expressed in fetal liver.
翻訳後修飾	Farnesylated. Farnesylation is required for membrane targeting. Unfarnesylated forms are shifted into the nucleus.
細胞内局在	Cell membrane. Early endosome. Endoplasmic reticulum. Cytoplasm. Cytoplasm > cytoskeleton > spindle. And mitotic spindle.

画像



ab121185, at 1/75 dilution, staining PRL-1 in paraffin-embedded Human placenta tissue, by Immunohistochemistry.

Immunohistochemistry (Formalin/PFA-fixed paraffin-embedded sections) - Anti-PRL-1 antibody (ab121185)



All lanes : Anti-PRL-1 antibody (ab121185) at 1/250 dilution

Lane 1 : Negative control (vector-only transfected HEK293T lysate)

Lane 2 : PRL-1-transfected HEK293T over-expression Lysate (Co-expressed with a C-terminal myc-DDK tag (~3.1 kDa))

Developed using the ECL technique.

Please note: All products are "FOR RESEARCH USE ONLY. NOT FOR USE IN DIAGNOSTIC PROCEDURES"

Our Abpromise to you: Quality guaranteed and expert technical support

- Replacement or refund for products not performing as stated on the datasheet
- Valid for 12 months from date of delivery
- Response to your inquiry within 24 hours
- We provide support in Chinese, English, French, German, Japanese and Spanish
- Extensive multi-media technical resources to help you
- We investigate all quality concerns to ensure our products perform to the highest standards

If the product does not perform as described on this datasheet, we will offer a refund or replacement. For full details of the Abpromise, please visit <https://www.abcam.co.jp/abpromise> or contact our technical team.

Terms and conditions

- Guarantee only valid for products bought direct from Abcam or one of our authorized distributors