


# Anti-Presenilin 2/AD5 (phospho S330) antibody [EP2614] ab109456

RabMAb

画像数 1

### 製品の概要

製品名	Anti-Presenilin 2/AD5 (phospho S330) antibody [EP2614]
製品の詳細	Rabbit monoclonal [EP2614] to Presenilin 2/AD5 (phospho S330)
由来種	Rabbit
アプリケーション	<b>適用あり:</b> WB <b>適用なし:</b> Flow Cyt, ICC/IF, IHC-P or IP
種交差性	<b>交差種:</b> Human <b>交差が予測される動物種:</b> Mouse, Rat 
免疫原	Synthetic peptide. This information is proprietary to Abcam and/or its suppliers.
ポジティブ・コントロール	HeLa cell lysates.
特記事項	<p>Our RabMAb<sup>®</sup> technology is a patented hybridoma-based technology for making rabbit monoclonal antibodies. For details on our patents, please refer to <a href="#">RabMAb<sup>®</sup> patents</a>.</p> <p>The Life Science industry has been in the grips of a reproducibility crisis for a number of years. Abcam is leading the way in addressing this with our range of recombinant monoclonal antibodies and knockout edited cell lines for gold-standard validation. Please check that this product meets your needs before purchasing.</p> <p>If you have any questions, special requirements or concerns, please send us an inquiry and/or contact our Support team ahead of purchase. Recommended alternatives for this product can be found below, along with publications, customer reviews and Q&amp;As</p>

### 製品の特性

製品の状態	Liquid
保存方法	Shipped at 4°C. Store at -20°C.
バッファー	pH: 7.20 Preservative: 0.05% Sodium azide Constituents: 0.1% BSA, 40% Glycerol (glycerin, glycerine), 9.85% Tris glycine, 50% Tissue culture supernatant
精製度	Tissue culture supernatant

ポリクローナル	モノクローナル
クローン名	EP2614
アイソタイプ	IgG

## アプリケーション

**The Abpromise guarantee** Abpromise保証は、次のテスト済みアプリケーションにおけるab109456の使用に適用されます  
アプリケーションノートには、推奨の開始希釈率がありますが、適切な希釈率につきましてはご確認ください。

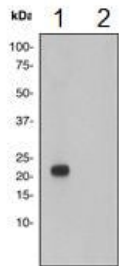
アプリケーション	Abreviews	特記事項
WB		1/1000 - 1/10000. Predicted molecular weight: 50 kDa.

**追加情報** Is unsuitable for Flow Cyt, ICC/IF, IHC-P or IP.

## ターゲット情報

<b>機能</b>	Probable catalytic subunit of the gamma-secretase complex, an endoprotease complex that catalyzes the intramembrane cleavage of integral membrane proteins such as Notch receptors and APP (beta-amyloid precursor protein). Requires the other members of the gamma-secretase complex to have a protease activity. May play a role in intracellular signaling and gene expression or in linking chromatin to the nuclear membrane. May function in the cytoplasmic partitioning of proteins.
<b>組織特異性</b>	Isoform 1 is seen in the placenta, skeletal muscle and heart while isoform 2 is seen in the heart, brain, placenta, liver, skeletal muscle and kidney.
<b>関連疾患</b>	Defects in PSEN2 are the cause of Alzheimer disease type 4 (AD4) [MIM:606889]. AD is an autosomal dominant Alzheimer disease. Alzheimer disease is a neurodegenerative disorder characterized by progressive dementia, loss of cognitive abilities, and deposition of fibrillar amyloid proteins as intraneuronal neurofibrillary tangles, extracellular amyloid plaques and vascular amyloid deposits. The major constituent of these plaques is the neurotoxic amyloid-beta-APP 40-42 peptide (s), derived proteolytically from the transmembrane precursor protein APP by sequential secretase processing. The cytotoxic C-terminal fragments (CTFs) and the caspase-cleaved products such as C31 derived from APP, are also implicated in neuronal death. Defects in PSEN2 are the cause of cardiomyopathy dilated type 1V (CMD1V) [MIM:613697]. It is a disorder characterized by ventricular dilation and impaired systolic function, resulting in congestive heart failure and arrhythmia. Patients are at risk of premature death.
<b>配列類似性</b>	Belongs to the peptidase A22A family.
<b>ドメイン</b>	The PAL motif is required for normal active site conformation.
<b>翻訳後修飾</b>	Heterogeneous proteolytic processing generates N-terminal and C-terminal fragments. Phosphorylated on serine residues.
<b>細胞内局在</b>	Endoplasmic reticulum membrane. Golgi apparatus membrane.

## 画像



Western blot - Anti-Presenilin 2/AD5 (phospho S330) antibody [EP2614] (ab109456)

**All lanes** : Anti-Presenilin 2/AD5 (phospho S330) antibody [EP2614] (ab109456) at 1/5000 dilution

**Lane 1** : HeLa cell lysate untreated with Alkaline Phosphatase

**Lane 2** : HeLa cell lysate treated with Alkaline Phosphatase

Lysates/proteins at 10 µg per lane.

### Secondary

**All lanes** : HRP-labelled goat anti-rabbit at 1/2000 dilution

**Predicted band size:** 50 kDa

**Please note:** All products are "FOR RESEARCH USE ONLY. NOT FOR USE IN DIAGNOSTIC PROCEDURES"

### Our Abpromise to you: Quality guaranteed and expert technical support

- Replacement or refund for products not performing as stated on the datasheet
- Valid for 12 months from date of delivery
- Response to your inquiry within 24 hours
- We provide support in Chinese, English, French, German, Japanese and Spanish
- Extensive multi-media technical resources to help you
- We investigate all quality concerns to ensure our products perform to the highest standards

If the product does not perform as described on this datasheet, we will offer a refund or replacement. For full details of the Abpromise, please visit <https://www.abcam.co.jp/abpromise> or contact our technical team.

### Terms and conditions

- Guarantee only valid for products bought direct from Abcam or one of our authorized distributors