


Anti-Presenilin 2/AD5 (phospho S327) antibody [EP2613Y] ab76114

リコンビナント RabMAb

画像数 3

製品の概要

製品名	Anti-Presenilin 2/AD5 (phospho S327) antibody [EP2613Y]
製品の詳細	Rabbit monoclonal [EP2613Y] to Presenilin 2/AD5 (phospho S327)
由来種	Rabbit
アプリケーション	適用あり: Dot blot, WB
種交差性	交差種: Mouse, Human 交差が予測される動物種: Rat 
免疫原	Synthetic peptide. This information is proprietary to Abcam and/or its suppliers.
ポジティブ・コントロール	WB: Hela whole cell lysate; RAW 264.7 whole cell lysate
特記事項	<p>This product has switched from a hybridoma to recombinant production method on 18th September 2023</p> <p>This product is a recombinant monoclonal antibody, which offers several advantages including:</p> <ul style="list-style-type: none">- High batch-to-batch consistency and reproducibility- Improved sensitivity and specificity- Long-term security of supply- Animal-free production <p>For more information see here.</p> <p>Our RabMAb[®] technology is a patented hybridoma-based technology for making rabbit monoclonal antibodies. For details on our patents, please refer to RabMAb[®] patents.</p>

製品の特性

製品の状態	Liquid
保存方法	Shipped at 4°C. Upon delivery aliquot and store at -20°C. Avoid freeze / thaw cycles.
バッファー	pH: 7.20 Preservative: 0.01% Sodium azide Constituents: 59% PBS, 40% Glycerol (glycerin, glycerine), 0.05% BSA
精製度	Protein A purified
ポリ/モノ	モノクローナル

クローン名 EP2613Y

アイソタイプ IgG

アプリケーション

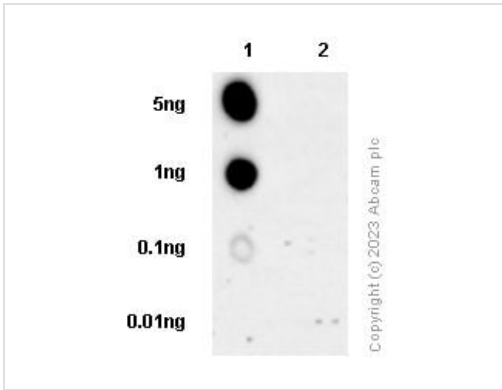
The Abpromise guarantee Abpromise保証は、次のテスト済みアプリケーションにおけるab76114の使用に適用されます
アプリケーションノートには、推奨の開始希釈率がありますが、適切な希釈率につきましてはご検討ください。

アプリケーション	Abreviews	特記事項
Dot blot		1/1000.
WB		1/500. Detects a band of approximately 23 kDa (predicted molecular weight: 50 kDa). Use at 1/1000 to 1/5000 for unpurified version

ターゲット情報

機能	Probable catalytic subunit of the gamma-secretase complex, an endoprotease complex that catalyzes the intramembrane cleavage of integral membrane proteins such as Notch receptors and APP (beta-amyloid precursor protein). Requires the other members of the gamma-secretase complex to have a protease activity. May play a role in intracellular signaling and gene expression or in linking chromatin to the nuclear membrane. May function in the cytoplasmic partitioning of proteins.
組織特異性	Isoform 1 is seen in the placenta, skeletal muscle and heart while isoform 2 is seen in the heart, brain, placenta, liver, skeletal muscle and kidney.
関連疾患	Defects in PSEN2 are the cause of Alzheimer disease type 4 (AD4) [MIM:606889]. AD is an autosomal dominant Alzheimer disease. Alzheimer disease is a neurodegenerative disorder characterized by progressive dementia, loss of cognitive abilities, and deposition of fibrillar amyloid proteins as intraneuronal neurofibrillary tangles, extracellular amyloid plaques and vascular amyloid deposits. The major constituent of these plaques is the neurotoxic amyloid-beta-APP 40-42 peptide (s), derived proteolytically from the transmembrane precursor protein APP by sequential secretase processing. The cytotoxic C-terminal fragments (CTFs) and the caspase-cleaved products such as C31 derived from APP, are also implicated in neuronal death. Defects in PSEN2 are the cause of cardiomyopathy dilated type 1V (CMD1V) [MIM:613697]. It is a disorder characterized by ventricular dilation and impaired systolic function, resulting in congestive heart failure and arrhythmia. Patients are at risk of premature death.
配列類似性	Belongs to the peptidase A22A family.
ドメイン	The PAL motif is required for normal active site conformation.
翻訳後修飾	Heterogeneous proteolytic processing generates N-terminal and C-terminal fragments. Phosphorylated on serine residues.
細胞内局在	Endoplasmic reticulum membrane. Golgi apparatus membrane.

画像



Dot Blot - Anti-Presenilin 2/AD5 (phospho S327) antibody [EP2613Y] (ab76114)

Dot blot analysis labelling Presenilin 2/AD5 (phospho S327) with ab76114 at 1/500 dilution.

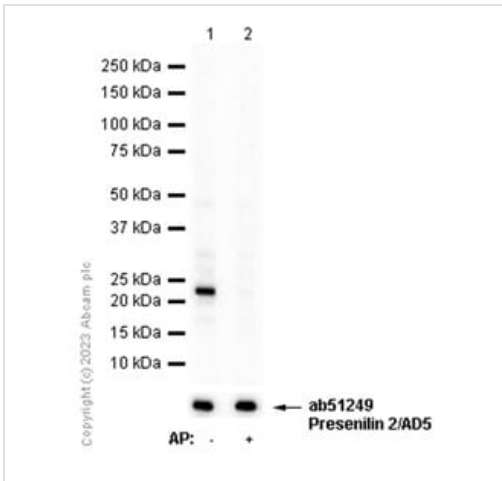
Lane 1: Presenilin 2/AD5 (phospho S327) peptide

Lane 2: Presenilin 2/AD5 non-phospho peptide

A peroxidase-conjugated goat anti-rabbit IgG (H+L) ([ab97051](#)) was used as the secondary antibody at a dilution of 1/100,000.

Blocking and dilution buffer: 5% NFDm/TBST.

Exposure time: 180s.



Western blot - Anti-Presenilin 2/AD5 (phospho S327) antibody [EP2613Y] (ab76114)

All lanes : Anti-Presenilin 2/AD5 (phospho S327) antibody [EP2613Y] (ab76114) at 1/500 dilution

Lane 1 : RAW 264.7 (Mouse Abelson murine leukemia virus-induced tumor macrophage) whole cell lysate

Lane 2 : RAW 264.7 (Mouse Abelson murine leukemia virus-induced tumor macrophage) whole cell lysate. Then the membrane was incubated with alkaline phosphatase

Lysates/proteins at 15 µg per lane.

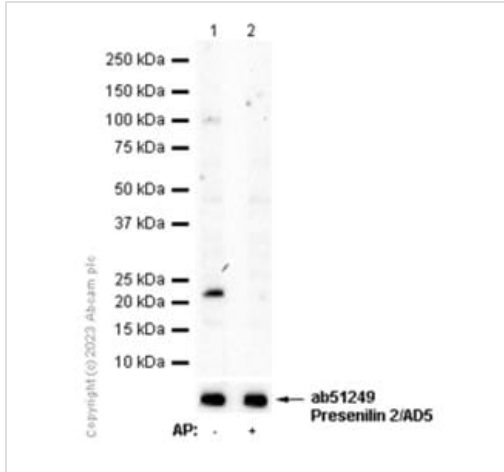
Predicted band size: 50 kDa

Exposure time: 80 seconds

Blocking and diluting buffer and concentration: 5% NFDm/TBST,

Primary antibody: incubated for 1h at room temperature.

Secondary antibody: incubated for 1h at 1:20,000 at room temperature ([ab97051](#)); incubated for 1h at 1:2000 at room temperature (Goat Anti-Rabbit IgG (HRP) with minimal cross-reactivity with human IgG)



Western blot - Anti-Presenilin 2/AD5 (phospho S327) antibody [EP2613Y] (ab76114)

All lanes : Anti-Presenilin 2/AD5 (phospho S327) antibody [EP2613Y] (ab76114) at 1/500 dilution

Lane 1 : HeLa (Human cervix adenocarcinoma epithelial cell) whole cell lysate

Lane 2 : HeLa (Human cervix adenocarcinoma epithelial cell) whole cell lysate. Then the membrane was incubated with alkaline phosphatase

Lysates/proteins at 15 µg per lane.

Predicted band size: 50 kDa

Exposure time: 180 seconds

Blocking and diluting buffer and concentration: 5% NFDN/TBST,

Primary antibody: incubated for 1h at room temperature.

Secondary antibody: incubated for 1h at 1:20,000 at room temperature (**ab97051**); incubated for 1h at 1:2000 at room temperature (Goat Anti-Rabbit IgG (HRP) with minimal cross-reactivity with human IgG)

Please note: All products are "FOR RESEARCH USE ONLY. NOT FOR USE IN DIAGNOSTIC PROCEDURES"

Our Abpromise to you: Quality guaranteed and expert technical support

- Replacement or refund for products not performing as stated on the datasheet
- Valid for 12 months from date of delivery
- Response to your inquiry within 24 hours
- We provide support in Chinese, English, French, German, Japanese and Spanish
- Extensive multi-media technical resources to help you
- We investigate all quality concerns to ensure our products perform to the highest standards

If the product does not perform as described on this datasheet, we will offer a refund or replacement. For full details of the Abpromise, please visit <https://www.abcam.co.jp/abpromise> or contact our technical team.

Terms and conditions

- Guarantee only valid for products bought direct from Abcam or one of our authorized distributors