

### Anti-Presenilin 2/AD5 antibody [EP1515Y] ab51249

リコンビナント **RabMAb**

★★★★★ **7 Abreviews** **15 References** **画像数 7**

#### 製品の概要

製品名	Anti-Presenilin 2/AD5 antibody [EP1515Y]
製品の詳細	Rabbit monoclonal [EP1515Y] to Presenilin 2/AD5
由来種	Rabbit
特異性	The mouse and rat recommendation is based on the WB results. We do not guarantee IHC-P for mouse and rat.
アプリケーション	<b>適用あり:</b> Flow Cyt (Intra), WB, IHC-P, IP, ICC/IF
種交差性	<b>交差種:</b> Mouse, Rat, Human
免疫原	Synthetic peptide within Human Presenilin 2/AD5 aa 300-400 (C terminal). The exact sequence is proprietary.
ポジティブ・コントロール	WB: HeLa, HepG2, C2C12, C6, and Neuro-2a lysates; IHC-P: Human cerebrum tissue; ICC/IF: PC-12 cells; Flow Cyt (intra): HeLa cells; IP: HeLa and PC-12 cell lysates.
特記事項	<p>This product is a recombinant monoclonal antibody, which offers several advantages including:</p> <ul style="list-style-type: none"> <li>- High batch-to-batch consistency and reproducibility</li> <li>- Improved sensitivity and specificity</li> <li>- Long-term security of supply</li> <li>- Animal-free production</li> </ul> <p>For more information <a href="#">see here</a>.</p> <p>Our RabMAb<sup>®</sup> technology is a patented hybridoma-based technology for making rabbit monoclonal antibodies. For details on our patents, please refer to <a href="#">RabMAb<sup>®</sup> patents</a>.</p>

#### 製品の特性

製品の状態	Liquid
保存方法	Shipped at 4°C. Upon delivery aliquot and store at -20°C. Avoid freeze / thaw cycles.
バッファー	<p>pH: 7.20</p> <p>Preservative: 0.01% Sodium azide</p> <p>Constituents: PBS, 40% Glycerol (glycerin, glycerine), 0.05% BSA</p>
精製度	Protein A purified
ポリ/モノ	モノクローナル

クローン名 EP1515Y  
アイソタイプ IgG

## アプリケーション

**The Abpromise guarantee** **Abpromise保証は、次のテスト済みアプリケーションにおけるab51249の使用に適用されます**  
アプリケーションノートには、推奨の開始希釈率がありますが、適切な希釈率につきましてはご検討ください。

アプリケーション	Abreviews	特記事項
Flow Cyt (Intra)		1/50.
WB	★★★★★ (4)	1/20000. Detects a band of approximately 23 kDa (predicted molecular weight: 50 kDa).
IHC-P	★★★★★ (1)	1/500. Perform heat mediated antigen retrieval with citrate buffer pH 6 before commencing with IHC staining protocol. See <b>IHC antigen retrieval protocols</b> .  The mouse and rat recommendation is based on the WB results. We do not guarantee IHC-P for mouse and rat.
IP	★★★★★ (1)	1/20.
ICC/IF		1/50 - 1/250.

## ターゲット情報

機能	Probable catalytic subunit of the gamma-secretase complex, an endoprotease complex that catalyzes the intramembrane cleavage of integral membrane proteins such as Notch receptors and APP (beta-amyloid precursor protein). Requires the other members of the gamma-secretase complex to have a protease activity. May play a role in intracellular signaling and gene expression or in linking chromatin to the nuclear membrane. May function in the cytoplasmic partitioning of proteins.
組織特異性	Isoform 1 is seen in the placenta, skeletal muscle and heart while isoform 2 is seen in the heart, brain, placenta, liver, skeletal muscle and kidney.
関連疾患	Defects in PSEN2 are the cause of Alzheimer disease type 4 (AD4) [MIM:606889]. AD is an autosomal dominant Alzheimer disease. Alzheimer disease is a neurodegenerative disorder characterized by progressive dementia, loss of cognitive abilities, and deposition of fibrillar amyloid proteins as intraneuronal neurofibrillary tangles, extracellular amyloid plaques and vascular amyloid deposits. The major constituent of these plaques is the neurotoxic amyloid-beta-APP 40-42 peptide (s), derived proteolytically from the transmembrane precursor protein APP by sequential secretase processing. The cytotoxic C-terminal fragments (CTFs) and the caspase-cleaved products such as C31 derived from APP, are also implicated in neuronal death. Defects in PSEN2 are the cause of cardiomyopathy dilated type 1V (CMD1V) [MIM:613697]. It is a disorder characterized by ventricular dilation and impaired systolic function, resulting in congestive heart failure and arrhythmia. Patients are at risk of premature death.
配列類似性	Belongs to the peptidase A22A family.
ドメイン	The PAL motif is required for normal active site conformation.

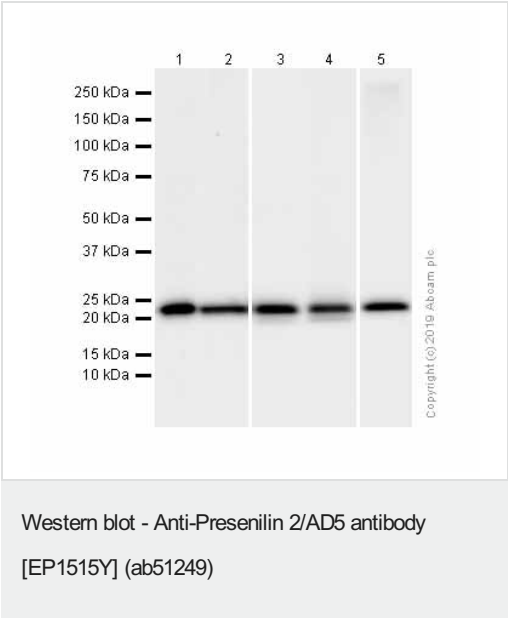
翻訳後修飾

Heterogeneous proteolytic processing generates N-terminal and C-terminal fragments.  
Phosphorylated on serine residues.

細胞内局在

Endoplasmic reticulum membrane. Golgi apparatus membrane.

画像



**All lanes :** Anti-Presenilin 2/AD5 antibody [EP1515Y] (ab51249) at 1/20000 dilution (Purified)

**Lane 1 :** HeLa (Human cervix adenocarcinoma epithelial cell) whole cell lysates

**Lane 2 :** HepG2 (Human hepatocellular carcinoma epithelial cell) whole cell lysates

**Lane 3 :** C2C12 (Mouse myoblasts myoblast) whole cell lysates

**Lane 4 :** C6 (Rat glial tumor glial cell) whole cell lysates

**Lane 5 :** Neuro-2a (Mouse neuroblastoma neuroblast) whole cell lysates

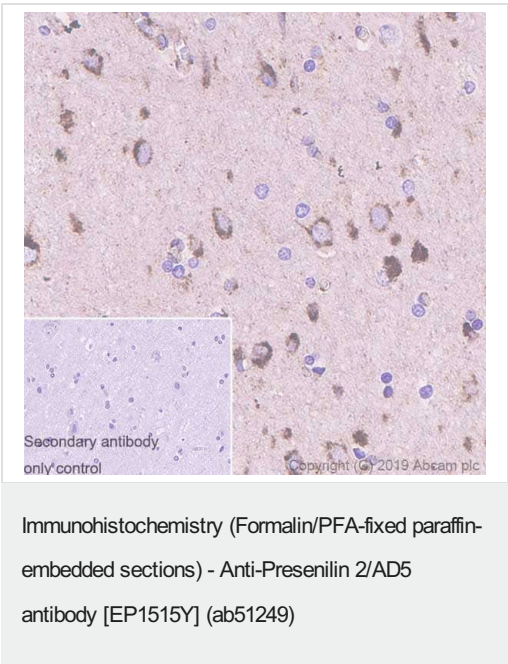
Lysates/proteins at 20 µg per lane.

Secondary

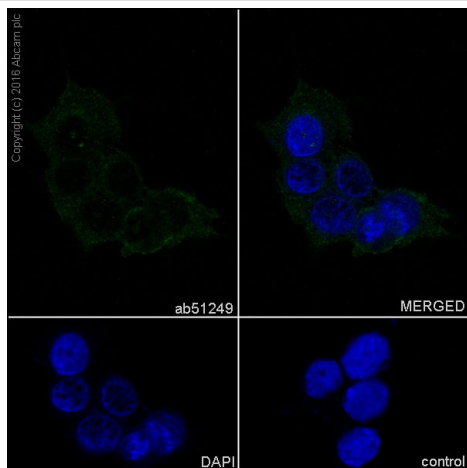
**All lanes :** Goat Anti-Rabbit IgG H&L (HRP) (**ab97051**) at 1/20000 dilution

**Predicted band size:** 50 kDa

**Observed band size:** 23 kDa

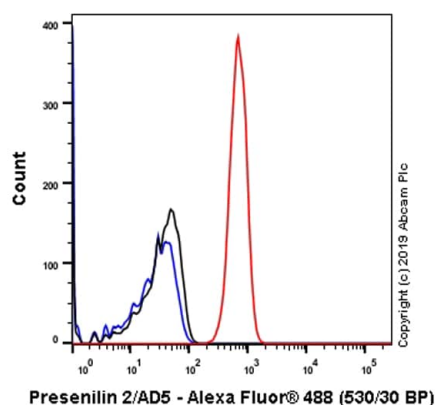


Immunohistochemistry (Formalin/PFA-fixed paraffin-embedded sections) analysis of human cerebrum tissue sections labeling Presenilin 2/AD5 with purified ab51249 at 1/500 dilution (0.51 µg/ml). Heat mediated antigen retrieval using Bond™ Epitope Retrieval Solution 2 (pH 9.0). Rabbit specific IHC polymer detection kit HRP/DAB (**ab209101**) was used as the secondary antibody. Negative control: PBS instead of the primary antibody. Hematoxylin was used as a counterstain.



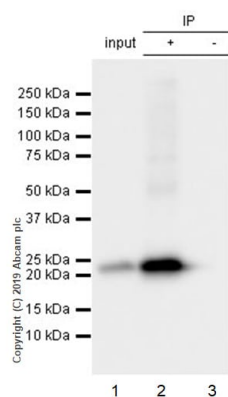
Immunocytochemistry/ Immunofluorescence - Anti-Presenilin 2/AD5 antibody [EP1515Y] (ab51249)

Immunocytochemistry/ Immunofluorescence analysis of PC-12 (Rat adrenal gland pheochromocytoma) cells labeling Presenilin 2/AD5 with purified ab51249 at 1/50 dilution (5 µg/ml). Cells were fixed in 100% Methanol and permeabilized with None. Cells were counterstained with Ab195889 Anti-alpha Tubulin antibody [DM1A] - Microtubule Marker (Alexa Fluor® 594) 1/200 (2.5 µg/ml). Goat anti rabbit IgG (Alexa Fluor® 488, **ab150077**) was used as the secondary antibody at 1/1000 (2 µg/ml) dilution. DAPI (blue) was used as nuclear counterstain. PBS instead of the primary antibody was used as the secondary antibody only control.



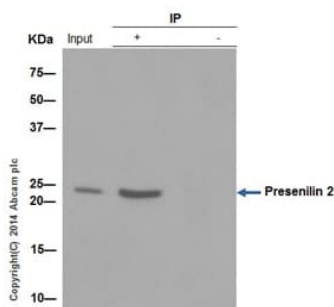
Flow Cytometry (Intracellular) - Anti-Presenilin 2/AD5 antibody [EP1515Y] (ab51249)

Intracellular Flow Cytometry analysis of HeLa (Human cervix adenocarcinoma epithelial cell) cells labeling Presenilin 2/AD5 with purified ab51249 at 1/50 dilution (5 µg/ml) (Red). Cells were fixed with 4% Paraformaldehyde and permeabilised with 90% Methanol. A Goat anti rabbit IgG (Alexa Fluor® 488, **ab150077**) secondary antibody was used at 1/2000. Isotype control - Rabbit monoclonal IgG (Black). Unlabeled control - Cell without incubation with primary antibody and secondary antibody (Blue).



Immunoprecipitation - Anti-Presenilin 2/AD5 antibody [EP1515Y] (ab51249)

ab51249 (purified ) at 1/20 dilution (1 ug) immunoprecipitating Presenilin 2/AD5 in HeLa whole cell lysate.  
Lane 1 (input): HeLa (Human cervix adenocarcinoma epithelial cell) whole cell lysate 10ug  
Lane 2 (+): ab51249 & HeLa whole cell lysate  
Lane 3 (-): Rabbit monoclonal IgG (**ab172730**) instead of ab51249 in HeLa whole cell lysate  
For western blotting, VeriBlot for IP Detection Reagent (HRP) (**ab131366**) was used at 1/1000 dilution.  
Blocking and diluting buffer: 5% NFDm/TBST.



Immunoprecipitation - Anti-Presenilin 2/AD5  
antibody [EP1515Y] (ab51249)

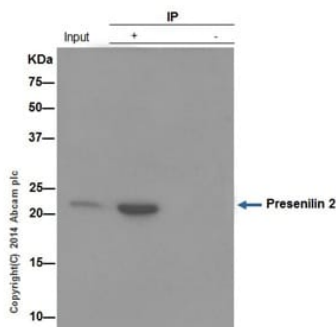
Presenilin was immunoprecipitated from 1 mg of HeLa whole cell extract with unpurified ab51249 at 1/50 dilution. Western blot was performed from the immunoprecipitate using ab51249 at 1/5000 dilution. Anti-Rabbit IgG (HRP), specific to the non-reduced form of IgG, was used as secondary antibody at 1/1500 dilution.

Input: HeLa whole cell extract 10 µg.

IP (+): ab51249 IP in HeLa whole cell extract.

IP (-): Rabbit monoclonal IgG (**ab172730**) instead of ab51249 in HeLa whole cell extract.

Blocking and dilution buffer and concentration: 5% NFDm/TBST.



Immunoprecipitation - Anti-Presenilin 2/AD5  
antibody [EP1515Y] (ab51249)

Presenilin was immunoprecipitated from 1 mg of PC-12 (rat adrenal gland pheochromocytoma) whole cell extract with unpurified ab51249 at 1/50 dilution. Western blot was performed from the immunoprecipitate using ab51249 at 1/5000 dilution. Anti-Rabbit IgG (HRP), specific to the non-reduced form of IgG, was used as secondary antibody at 1/1500 dilution.

Input: PC-12 whole cell extract 10 µg.

IP (+): ab51249 IP in PC-12 whole cell extract.

IP (-): Rabbit monoclonal IgG (**ab172730**) instead of ab51249 in PC-12 whole cell extract.

Blocking and dilution buffer and concentration: 5% NFDm/TBST.

**Please note:** All products are "FOR RESEARCH USE ONLY. NOT FOR USE IN DIAGNOSTIC PROCEDURES"

### Our Abpromise to you: Quality guaranteed and expert technical support

- Replacement or refund for products not performing as stated on the datasheet
- Valid for 12 months from date of delivery
- Response to your inquiry within 24 hours
- We provide support in Chinese, English, French, German, Japanese and Spanish
- Extensive multi-media technical resources to help you
- We investigate all quality concerns to ensure our products perform to the highest standards

If the product does not perform as described on this datasheet, we will offer a refund or replacement. For full details of the Abpromise, please visit <https://www.abcam.co.jp/abpromise> or contact our technical team.

## Terms and conditions

---

- Guarantee only valid for products bought direct from Abcam or one of our authorized distributors