

Anti-Prealbumin antibody ab106558

1 References [画像数 4](#)

製品の概要

製品名	Anti-Prealbumin antibody
製品の詳細	Chicken polyclonal to Prealbumin
由来種	Chicken
アプリケーション	適用あり: WB, IHC-P
種交差性	交差種: Human, Recombinant fragment
免疫原	Synthetic peptide corresponding to Human Prealbumin (internal sequence). Database link: <u>P02766</u>
ポジティブ・コントロール	WB: Recombinant Prealbumin protein. Human lung tissue lysate. IHC-P: Human lung tissue.
特記事項	<p>The Life Science industry has been in the grips of a reproducibility crisis for a number of years. Abcam is leading the way in addressing this with our range of recombinant monoclonal antibodies and knockout edited cell lines for gold-standard validation. Please check that this product meets your needs before purchasing.</p> <p>If you have any questions, special requirements or concerns, please send us an inquiry and/or contact our Support team ahead of purchase. Recommended alternatives for this product can be found below, along with publications, customer reviews and Q&As</p>

製品の特性

製品の状態	Liquid
保存方法	Shipped at 4°C. Store at +4°C short term (1-2 weeks). Upon delivery aliquot. Store at -20°C long term. Avoid freeze / thaw cycle.
バッファー	pH: 7.2 Preservative: 0.02% Sodium azide Constituent: PBS
精製度	Immunogen affinity purified
ポリ/モノ	ポリクローナル
アイソタイプ	IgY

アプリケーション

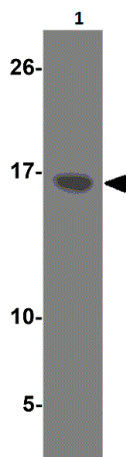
The Abpromise guarantee **Abpromise保証は、**次のテスト済みアプリケーションにおけるab106558の使用に適用されます
 アプリケーションノートには、推奨の開始希釈率がありますが、適切な希釈率につきましてはご検討ください。

アプリケーション	Abreviews	特記事項
WB		Use a concentration of 1 - 2 µg/ml. Predicted molecular weight: 16 kDa.
IHC-P		Use a concentration of 2.5 - 20 µg/ml.

ターゲット情報

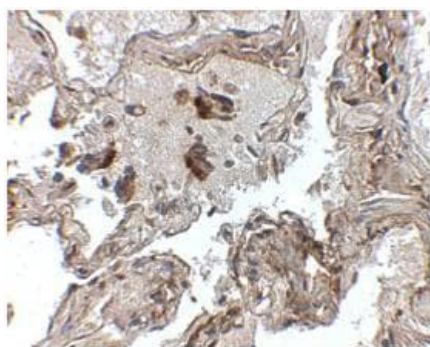
機能	Thyroid hormone-binding protein. Probably transports thyroxine from the bloodstream to the brain.
組織特異性	Detected in serum and cerebrospinal fluid (at protein level). Highly expressed in choroid plexus epithelial cells. Detected in retina pigment epithelium and liver.
関連疾患	<p>Defects in TTR are the cause of amyloidosis transthyretin-related (AMYL-TTR) [MIM:105210]. A hereditary generalized amyloidosis due to transthyretin amyloid deposition. Protein fibrils can form in different tissues leading to amyloid polyneuropathies, amyloidotic cardiomyopathy, carpal tunnel syndrome, systemic senile amyloidosis. The disease includes leptomeningeal amyloidosis that is characterized by primary involvement of the central nervous system. Neuropathologic examination shows amyloid in the walls of leptomeningeal vessels, in pia arachnoid, and subpial deposits. Some patients also develop vitreous amyloid deposition that leads to visual impairment (oculoleptomeningeal amyloidosis). Clinical features include seizures, stroke-like episodes, dementia, psychomotor deterioration, variable amyloid deposition in the vitreous humor.</p> <p>Defects in TTR are a cause of hyperthyroxinemia dysransthyretinemic euthyroidal (HTDE) [MIM:145680]. It is a condition characterized by elevation of total and free thyroxine in healthy, euthyroid persons without detectable binding protein abnormalities.</p> <p>Defects in TTR are a cause of carpal tunnel syndrome type 1 (CTS1) [MIM:115430]. It is a condition characterized by entrapment of the median nerve within the carpal tunnel. Symptoms include burning pain and paresthesias involving the ventral surface of the hand and fingers which may radiate proximally. Impairment of sensation in the distribution of the median nerve and thenar muscle atrophy may occur. This condition may be associated with repetitive occupational trauma, wrist injuries, amyloid neuropathies, rheumatoid arthritis.</p>
配列類似性	Belongs to the transthyretin family.
ドメイン	Each monomer has two 4-stranded beta sheets and the shape of a prolate ellipsoid. Antiparallel beta-sheet interactions link monomers into dimers. A short loop from each monomer forms the main dimer-dimer interaction. These two pairs of loops separate the opposed, convex beta-sheets of the dimers to form an internal channel.
細胞内局在	Secreted. Cytoplasm.

画像



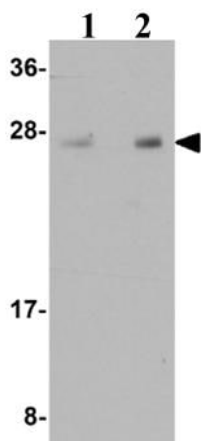
Western Blot of recombinant Prealbumin protein (125 ng) labeling Prealbumin with Anti-Prealbumin antibody (ab106558) at 1 μ g/ml.

Western blot - Anti-Prealbumin antibody (ab106558)



Immunohistochemical analysis of Prealbumin in Human lung tissue, using ab106558 at 2.5 μ g/ml.

Immunohistochemistry (Formalin/PFA-fixed paraffin-embedded sections) - Anti-Prealbumin antibody (ab106558)



Lane 1 : Anti-Prealbumin antibody (ab106558) at 1 μ g/ml

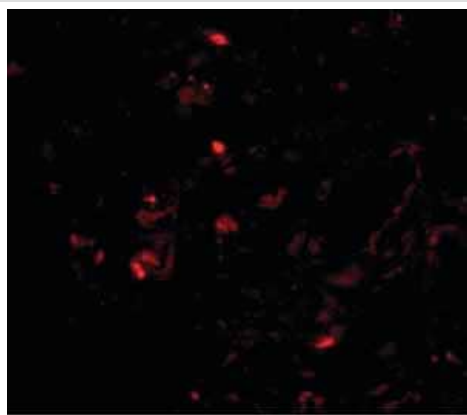
Lane 2 : Anti-Prealbumin antibody (ab106558) at 2 μ g/ml

All lanes : Human lung tissue lysate

Lysates/proteins at 15 μ g per lane.

Predicted band size: 16 kDa

Western blot - Anti-Prealbumin antibody (ab106558)



Immunohistochemical analysis of human lung tissue labelling
Prealbumin with ab106558 at 20 ug/mL.

Immunohistochemistry (Formalin/PFA-fixed paraffin-
embedded sections) - Anti-Prealbumin antibody
(ab106558)

Please note: All products are "FOR RESEARCH USE ONLY. NOT FOR USE IN DIAGNOSTIC PROCEDURES"

Our Abpromise to you: Quality guaranteed and expert technical support

- Replacement or refund for products not performing as stated on the datasheet
- Valid for 12 months from date of delivery
- Response to your inquiry within 24 hours
- We provide support in Chinese, English, French, German, Japanese and Spanish
- Extensive multi-media technical resources to help you
- We investigate all quality concerns to ensure our products perform to the highest standards

If the product does not perform as described on this datasheet, we will offer a refund or replacement. For full details of the Abpromise, please visit <https://www.abcam.co.jp/abpromise> or contact our technical team.

Terms and conditions

- Guarantee only valid for products bought direct from Abcam or one of our authorized distributors