


Anti-PRDM1/Blimp1 antibody ab13700

★★★★★ [5 Abreviews](#) [10 References](#) [画像数 1](#)

製品の概要

製品名	Anti-PRDM1/Blimp1 antibody
製品の詳細	Goat polyclonal to PRDM1/Blimp1
由来種	Goat
アプリケーション	適用あり: ICC, ChIP, Flow Cyt
種交差性	交差種: Human 交差が予測される動物種: Mouse, Rat, Cow, Dog, Pig 
免疫原	Synthetic peptide corresponding to Human PRDM1/Blimp1 aa 800 to the C-terminus (C terminal). Database link: O75626 Run BLAST with Run BLAST with
ポジティブ・コントロール	ICC: A431 cells
特記事項	<p>The Life Science industry has been in the grips of a reproducibility crisis for a number of years. Abcam is leading the way in addressing this with our range of recombinant monoclonal antibodies and knockout edited cell lines for gold-standard validation. Please check that this product meets your needs before purchasing.</p> <p>If you have any questions, special requirements or concerns, please send us an inquiry and/or contact our Support team ahead of purchase. Recommended alternatives for this product can be found below, along with publications, customer reviews and Q&As</p>

製品の特性

製品の状態	Liquid
保存方法	Shipped at 4°C. Store at +4°C short term (1-2 weeks). Upon delivery aliquot. Store at -20°C. Avoid freeze / thaw cycle.
バッファー	pH: 7.3 Preservative: 0.02% Sodium azide Constituents: Tris buffered saline, 0.5% BSA
精製度	Immunogen affinity purified
特記事項 (精製)	Purified from goat serum by ammonium sulphate precipitation followed by antigen affinity chromatography using the immunizing peptide.
ポリ/モノ	ポリクローナル

アプリケーション

The Abpromise guarantee **Abpromise保証は、次のテスト済みアプリケーションにおけるab13700の使用に適用されず**

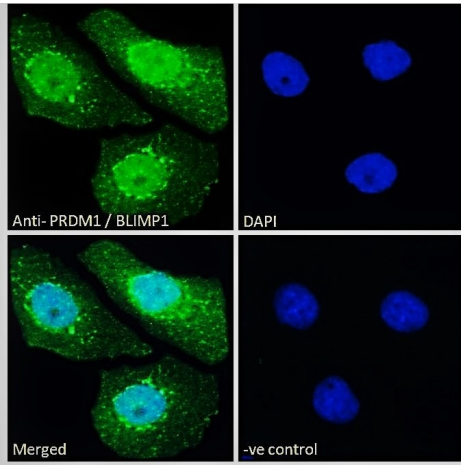
アプリケーションノートには、推奨の開始希釈率がありますが、適切な希釈率につきましてはご確認ください。

アプリケーション	Abreviews	特記事項
ICC		Use a concentration of 10 µg/ml.
ChIP		Use at an assay dependent concentration. PubMed: 17264218
Flow Cyt	★★★★★ (1)	Use at an assay dependent concentration. ab37373 - Goat polyclonal IgG, is suitable for use as an isotype control with this antibody.

ターゲット情報

機能	Transcriptional repressor that binds specifically to the PRDI element in the promoter of the beta-interferon gene (PubMed:1851123). Drives the maturation of B-lymphocytes into Ig secreting cells (PubMed:12626569).
配列類似性	Belongs to the class V-like SAM-binding methyltransferase superfamily. Contains 4 C2H2-type zinc fingers. Contains 1 SET domain.
翻訳後修飾	Sumoylation at Lys-816 by PIAS1 augments transcriptional repressor activity, and is critical for plasma cell differentiation. Ubiquitinated by the SCF(FBXO11) complex, leading to its degradation by the proteasome.
細胞内局在	Nucleus. Cytoplasm.

画像



Immunocytochemistry - Anti-PRDM1/Blimp1 antibody (ab13700)

Immunofluorescence analysis of paraformaldehyde fixed A431 cells, permeabilized with 0.15% Triton. Primary incubation 1hr (10ug/ml) followed by Alexa Fluor 488 secondary antibody (2ug/ml), showing nuclear staining. The nuclear stain is DAPI (blue). Negative control: Unimmunized goat IgG (10ug/ml) followed by Alexa Fluor 488 secondary antibody (2ug/ml).

Please note: All products are "FOR RESEARCH USE ONLY. NOT FOR USE IN DIAGNOSTIC PROCEDURES"

Our Abpromise to you: Quality guaranteed and expert technical support

- Replacement or refund for products not performing as stated on the datasheet
- Valid for 12 months from date of delivery
- Response to your inquiry within 24 hours
- We provide support in Chinese, English, French, German, Japanese and Spanish
- Extensive multi-media technical resources to help you
- We investigate all quality concerns to ensure our products perform to the highest standards

If the product does not perform as described on this datasheet, we will offer a refund or replacement. For full details of the Abpromise, please visit <https://www.abcam.co.jp/abpromise> or contact our technical team.

Terms and conditions

- Guarantee only valid for products bought direct from Abcam or one of our authorized distributors